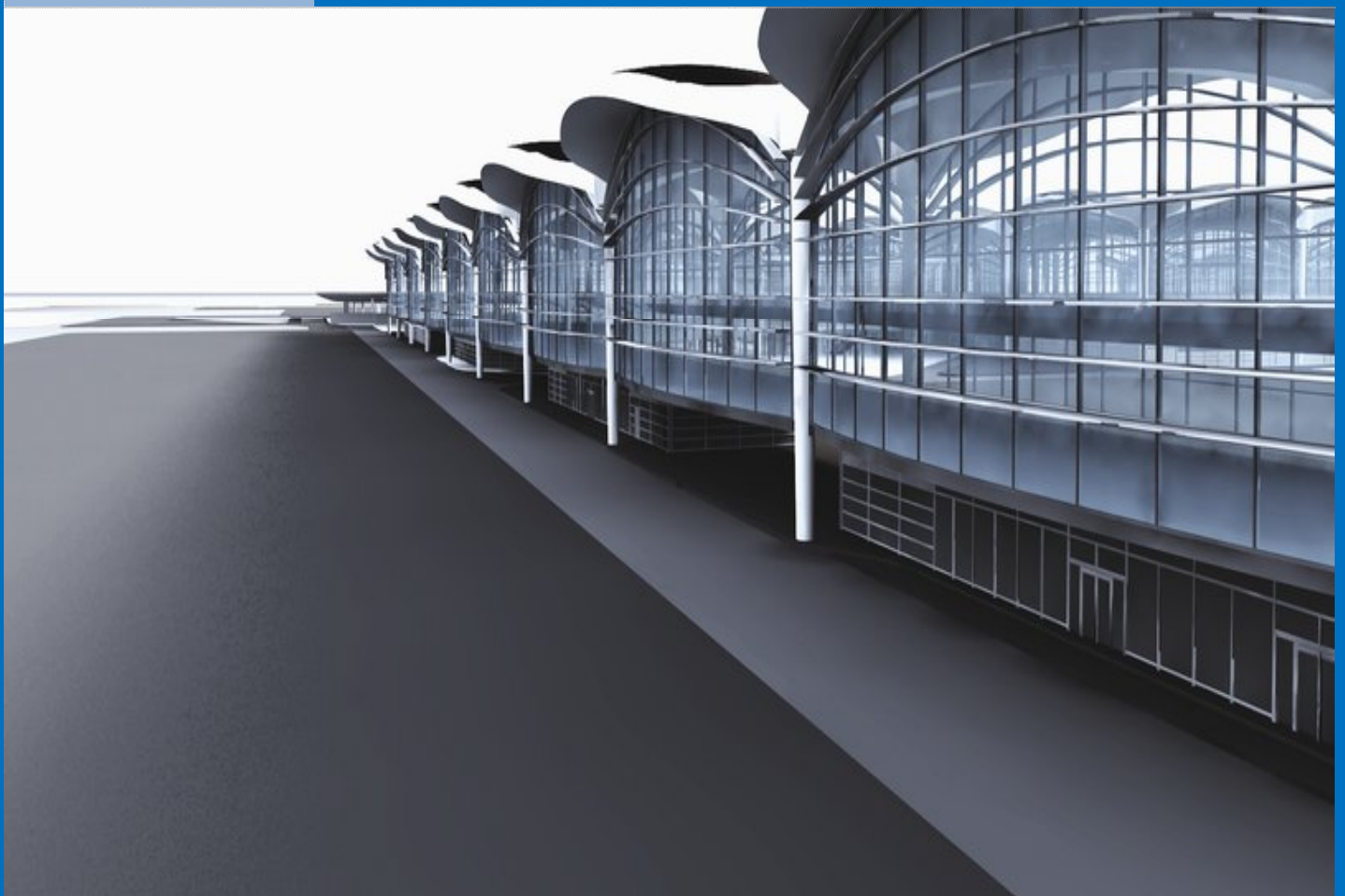




**AIRPORT INTERNATIONAL GROUP | Queen Alia
International Airport**

**NOVEMBER
30, 2009**

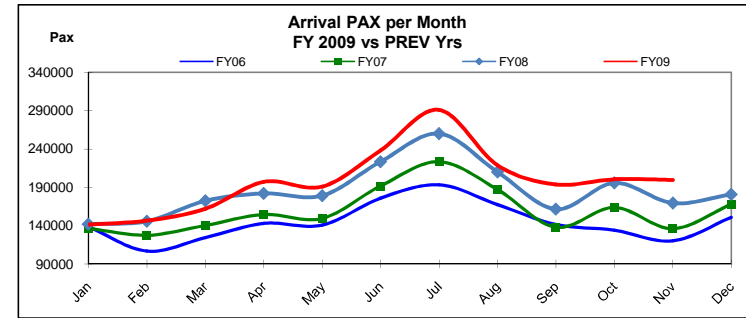
QAIA TRAFFIC STATISTICS



HISTORICAL PASSENGERS (PAX) November 30, 2009

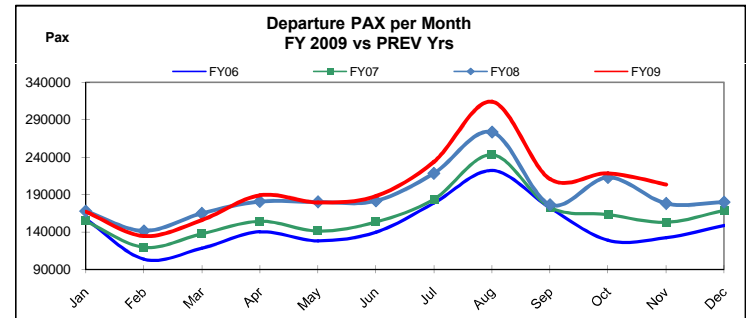
Total Arrival PAX

Month	FY09	FY08	Var %	FY07	Var %	FY06	Var %
Jan	141,465	141,893	-0.30%	136,584	3.57%	138,460	2.17%
Feb	146,445	145,788	0.45%	127,330	15.01%	106,900	36.99%
Mar	161,812	172,465	-6.18%	140,178	15.43%	124,457	30.01%
Apr	196,986	182,056	8.20%	154,607	27.41%	142,868	37.88%
May	190,696	179,219	6.40%	149,341	27.69%	140,582	35.65%
Jun	238,065	223,175	6.67%	191,563	24.28%	175,797	35.42%
Jul	290,910	259,809	11.97%	223,250	30.31%	193,032	50.71%
Aug	218,876	210,013	4.22%	187,112	16.98%	167,342	30.80%
Sep	193,841	161,400	20.10%	137,692	40.78%	141,396	37.09%
Oct	200,516	195,852	2.38%	163,732	22.47%	134,061	49.57%
Nov	199,302	169,325	17.70%	135,874	46.68%	120,123	65.91%
Dec		180,855	0.00%	167,974	0.00%	150,656	0.00%
YTD November	2,178,914	2,040,995	6.76%	1,747,263	24.70%	1,585,018	37.47%
Total		2,221,850		1,915,237		1,735,674	



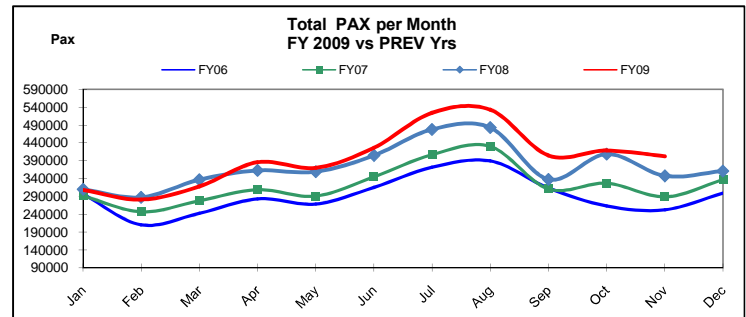
Total Departure PAX

Month	FY09	FY08	Var %	FY07	Var %	FY06	Var %
Jan	167,021	168,038	-0.61%	154,803	7.89%	157,641	5.95%
Feb	134,665	141,376	-4.75%	119,352	12.83%	103,572	30.02%
Mar	155,989	164,799	-5.35%	137,580	13.38%	118,126	32.05%
Apr	189,009	180,695	4.60%	154,309	22.49%	140,335	34.68%
May	179,498	180,216	-0.40%	141,320	27.02%	128,139	40.08%
Jun	188,203	181,706	3.58%	153,326	22.75%	139,742	34.68%
Jul	233,716	218,293	7.07%	183,774	27.18%	178,419	30.99%
Aug	314,235	273,545	14.88%	243,280	29.17%	222,212	41.41%
Sep	210,831	176,597	19.39%	173,131	21.78%	172,333	22.34%
Oct	218,336	212,812	2.60%	163,337	33.67%	128,803	69.51%
Nov	203,441	177,992	14.30%	152,870	33.08%	132,373	53.69%
Dec		179,892	0.00%	168,807	0.00%	148,692	0.00%
YTD November	2,194,944	2,076,069	5.73%	1,777,082	23.51%	1,621,695	35.35%
Total		2,255,961		1,945,889		1,770,387	



Total PAX Combined

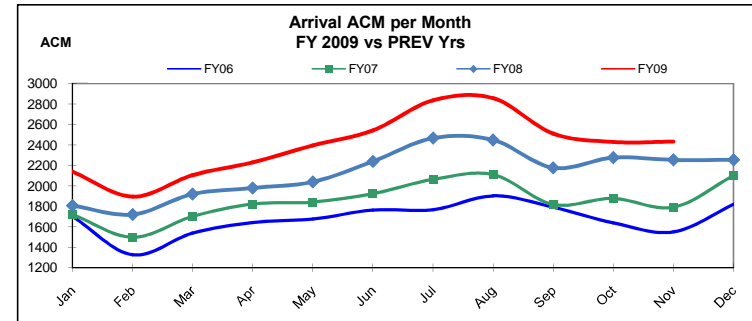
Month	FY09	FY08	Var %	FY07	Var %	FY06	Var %
Jan	308,486	309,931	-0.47%	291,387	5.87%	296,101	4.18%
Feb	281,110	287,164	-2.11%	246,682	13.96%	210,472	33.56%
Mar	317,801	337,264	-5.77%	277,758	14.42%	242,583	31.01%
Apr	385,995	362,751	6.41%	308,916	24.95%	283,203	36.30%
May	370,194	359,435	2.99%	290,661	27.36%	268,721	37.76%
Jun	426,268	404,881	5.28%	344,889	23.60%	315,539	35.09%
Jul	524,626	478,102	9.73%	407,024	28.89%	371,451	41.24%
Aug	533,111	483,558	10.25%	430,392	23.87%	389,554	36.85%
Sep	404,672	337,997	19.73%	310,823	30.19%	313,729	28.99%
Oct	418,852	408,664	2.49%	327,069	28.06%	262,864	59.34%
Nov	402,743	347,317	15.96%	288,744	39.48%	252,496	59.50%
Dec		360,747	0.00%	336,781	0.00%	299,348	0.00%
YTD November	4,373,858	4,117,064	6.24%	3,524,345	24.10%	3,206,713	36.40%
Total		4,477,811		3,861,126		3,506,061	



AIRCRAFT MOVEMENTS (ACM) November 30, 2009

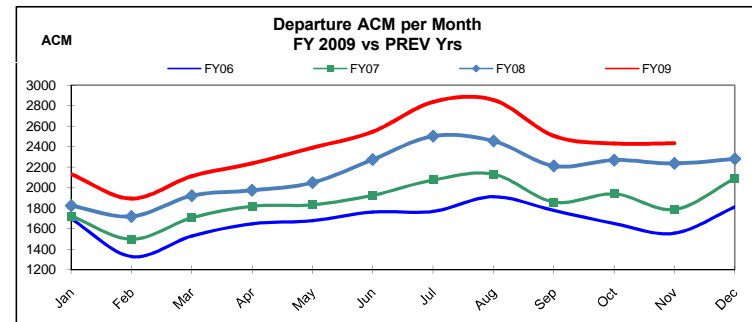
TOTAL ARRIVAL ACM

Month	FY09	FY08	Var %	FY07	Var %	FY06	Var %
Jan	2,139	1,807	18.37%	1,722	24.22%	1,702	25.68%
Feb	1,894	1,721	10.05%	1,498	26.44%	1,328	42.62%
Mar	2,106	1,920	9.69%	1,702	23.74%	1,540	36.75%
Apr	2,230	1,979	12.68%	1,823	22.33%	1,644	35.64%
May	2,396	2,039	17.51%	1,842	30.08%	1,676	42.96%
Jun	2,543	2,240	13.53%	1,924	32.17%	1,764	44.16%
Jul	2,836	2,466	15.00%	2,063	37.47%	1,768	60.41%
Aug	2,856	2,449	16.62%	2,112	35.23%	1,903	50.08%
Sep	2,509	2,177	15.25%	1,818	38.01%	1,792	40.01%
Oct	2,429	2,275	6.77%	1,877	29.41%	1,641	48.02%
Nov	2,434	2,253	8.03%	1,791	35.90%	1,552	56.83%
Dec		2,256	0.00%	2,101	0.00%	1,821	0.00%
YTD November	26,372	23,326	13.06%	20,172	30.74%	18,310	44.03%
Total		25,582		22,273		20,131	



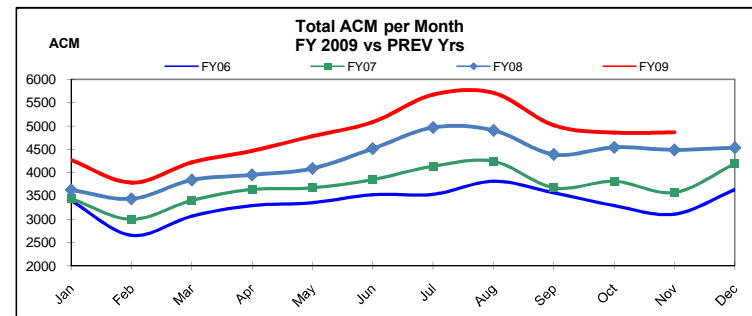
Total Departure ACM

Month	FY09	FY08	Var %	FY07	Var %	FY06	Var %
Jan	2,132	1,825	16.82%	1,725	23.59%	1,699	25.49%
Feb	1,893	1,720	10.06%	1,499	26.28%	1,329	42.44%
Mar	2,114	1,924	9.88%	1,706	23.92%	1,530	38.17%
Apr	2,238	1,977	13.20%	1,821	22.90%	1,649	35.72%
May	2,391	2,050	16.63%	1,834	30.37%	1,679	42.41%
Jun	2,546	2,276	11.86%	1,927	32.12%	1,765	44.25%
Jul	2,837	2,504	13.30%	2,076	36.66%	1,769	60.37%
Aug	2,856	2,456	16.29%	2,133	33.90%	1,912	49.37%
Sep	2,506	2,213	13.24%	1,860	34.73%	1,778	40.94%
Oct	2,432	2,270	7.14%	1,940	25.36%	1,652	47.22%
Nov	2,434	2,237	8.81%	1,788	36.13%	1,558	56.23%
Dec		2,280	0.00%	2,090	0.00%	1,815	0.00%
YTD November	26,379	23,452	12.48%	20,309	29.89%	18,320	43.99%
Total		25,732		22,399		20,135	



Total ACM Combined

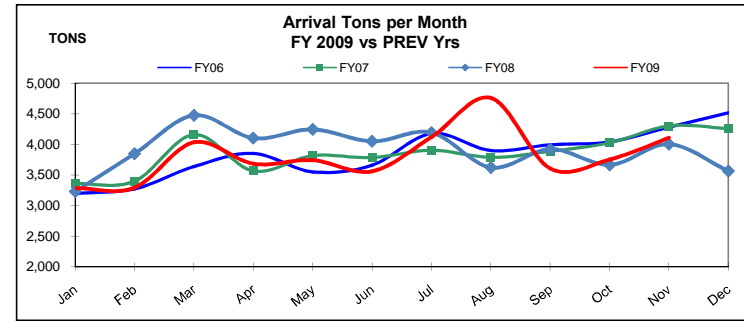
Month	FY09	FY08	Var %	FY07	Var %	FY06	Var %
Jan	4,271	3,632	17.59%	3,447	23.90%	3,401	25.58%
Feb	3,787	3,441	10.06%	2,997	26.36%	2,657	42.53%
Mar	4,220	3,844	9.78%	3,408	23.83%	3,070	37.46%
Apr	4,468	3,956	12.94%	3,644	22.61%	3,293	35.68%
May	4,787	4,089	17.07%	3,676	30.22%	3,355	42.68%
Jun	5,089	4,516	12.69%	3,851	32.15%	3,529	44.21%
Jul	5,673	4,970	14.14%	4,139	37.06%	3,537	60.39%
Aug	5,712	4,905	16.45%	4,245	34.56%	3,815	49.72%
Sep	5,015	4,390	14.24%	3,678	36.35%	3,570	40.48%
Oct	4,861	4,545	6.95%	3,817	27.35%	3,293	47.62%
Nov	4,868	4,490	8.42%	3,579	36.02%	3,110	56.53%
Dec		4,536	0.00%	4,191	0.00%	3,636	0.00%
YTD November	52,751	46,778	12.77%	40,481	30.31%	36,630	44.01%
Total		51,314		44,672		40,266	



CARGO (TONS) November 30, 2009

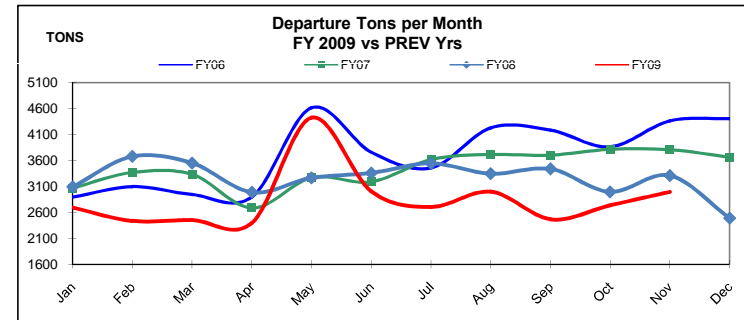
CARGO (TONS) ARRIVAL

Month	FY09	FY08	Var %	FY07	Var %	FY06	Var %
Jan	3,285	3,227	1.78%	3,356	-2.13%	3,199	2.70%
Feb	3,293	3,847	-14.40%	3,396	-3.05%	3,271	0.66%
Mar	4,033	4,471	-9.80%	4,156	-2.98%	3,634	10.96%
Apr	3,681	4,100	-10.23%	3,565	3.24%	3,851	-4.43%
May	3,739	4,242	-11.86%	3,813	-1.93%	3,548	5.39%
Jun	3,557	4,048	-12.13%	3,783	-5.97%	3,656	-2.71%
Jul	4,118	4,192	-1.77%	3,904	5.48%	4,174	-1.35%
Aug	4,757	3,619	31.44%	3,787	25.60%	3,899	22.02%
Sep	3,605	3,919	-8.01%	3,887	-7.25%	3,991	-9.68%
Oct	3,752	3,664	2.41%	4,025	-6.78%	4,039	-7.10%
Nov	4,108	4,002	2.64%	4,299	-4.44%	4,278	-3.97%
Dec		3,562	0.00%	4,257	0.00%	4,514	0.00%
YTD November	41,926	43,331	-3.24%	41,971	-0.11%	41,540	0.93%
Total		46,893		46,228		46,053	



CARGO (TONS) DEPARTURE

Month	FY09	FY08	Var %	FY07	Var %	FY06	Var %
Jan	2,695	3,093	-12.85%	3,067	-12.12%	2,895	-6.89%
Feb	2,436	3,680	-33.79%	3,369	-27.68%	3,096	-21.31%
Mar	2,451	3,551	-30.98%	3,334	-26.49%	2,944	-16.75%
Apr	2,400	2,989	-19.70%	2,688	-10.72%	2,898	-17.20%
May	4,427	3,265	35.61%	3,269	35.43%	4,616	-4.09%
Jun	3,005	3,360	-10.57%	3,192	-5.84%	3,758	-20.04%
Jul	2,707	3,546	-23.67%	3,621	-25.25%	3,459	-21.74%
Aug	3,002	3,350	-10.38%	3,716	-19.22%	4,231	-29.04%
Sep	2,469	3,438	-28.20%	3,706	-33.38%	4,186	-41.03%
Oct	2,737	2,997	-8.70%	3,815	-28.27%	3,864	-29.18%
Nov	2,998	3,309	-9.41%	3,809	-21.29%	4,365	-31.31%
Dec		2,491	0.00%	3,662	0.00%	4,407	0.00%
YTD November	31,327	36,578	-14.36%	37,586	-16.65%	40,312	-22.29%
Total		39,069		41,247		44,719	



TOTAL CARGO (TONS) COMBINED

Month	FY09	FY08	Var %	FY07	Var %	FY06	Var %
Jan	5,980	6,320	-5.38%	6,423	-6.90%	6,093	-1.86%
Feb	5,729	7,526	-23.88%	6,765	-15.31%	6,367	-10.02%
Mar	6,483	8,021	-19.17%	7,490	-13.44%	6,578	-1.44%
Apr	6,081	7,089	-14.22%	6,253	-2.76%	6,750	-9.91%
May	8,166	7,507	8.78%	7,082	15.32%	8,164	0.03%
Jun	6,562	7,408	-11.42%	6,974	-5.91%	7,415	-11.50%
Jul	6,825	7,738	-11.80%	7,525	-9.31%	7,633	-10.59%
Aug	7,759	6,969	11.34%	7,504	3.40%	8,129	-4.55%
Sep	6,074	7,357	-17.45%	7,592	-20.00%	8,177	-25.73%
Oct	6,489	6,661	-2.59%	7,840	-17.24%	7,903	-17.90%
Nov	7,106	7,312	-2.81%	8,108	-12.36%	8,642	-17.78%
Dec		6,053	0.00%	7,919	0.00%	8,920	0.00%
YTD November	73,253	79,909	-8.33%	79,556	-7.92%	81,852	-10.50%
Total		85,962		87,475		90,772	

