



Airport International Group
مجموعة المطار الدولي

***QAIA MONTHLY
TRAFFIC STATISTICS
AUGUST 2013***

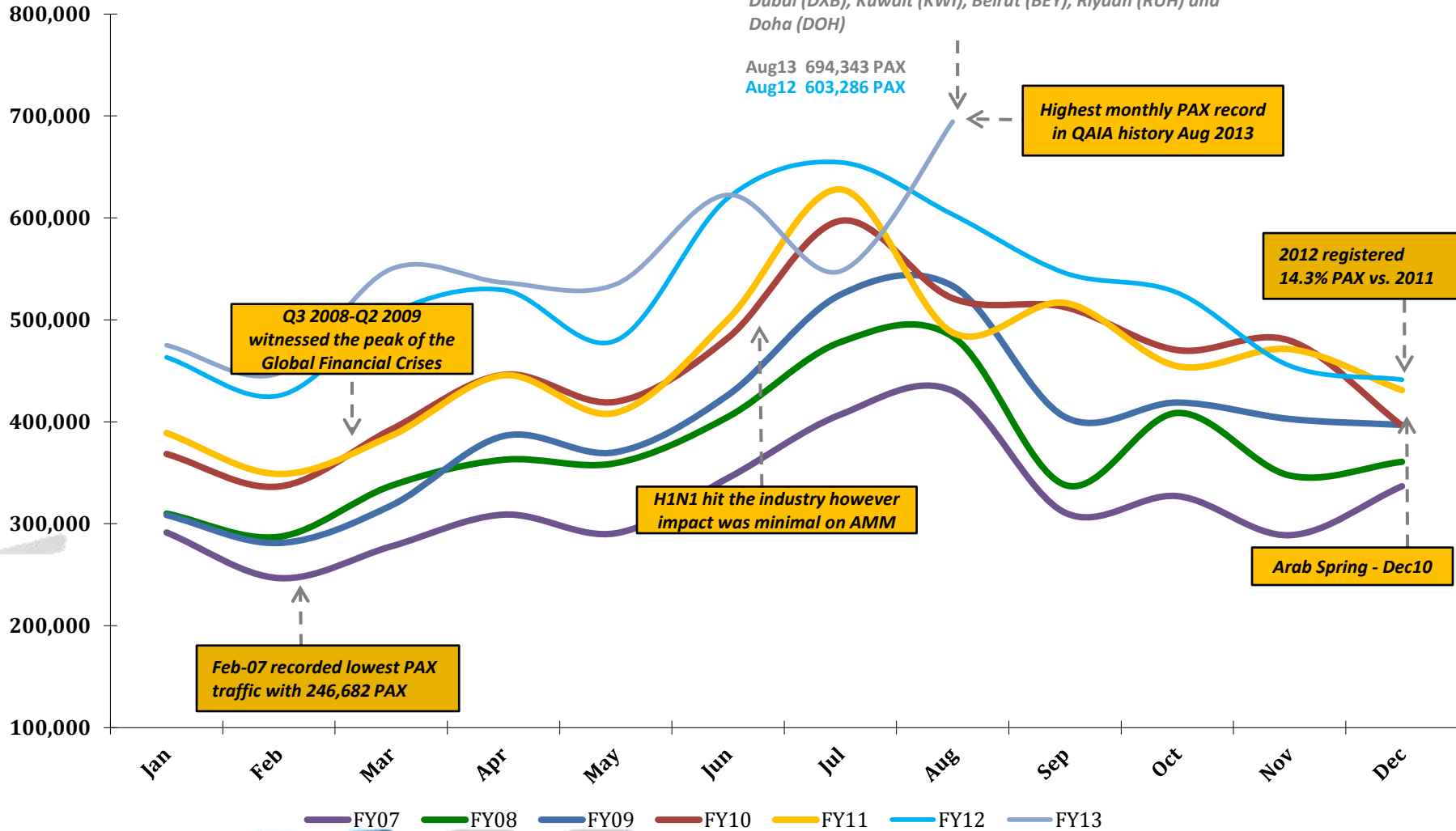


Total PAX per Month FY 2013 vs. Previous Years

+15.09% in PAX YTD Aug 2013 vs. YTD Aug 2012

Top contributing Destinations to this month's growth were Dubai (DXB), Kuwait (KWI), Beirut (BEY), Riyadh (RUH) and Doha (DOH)

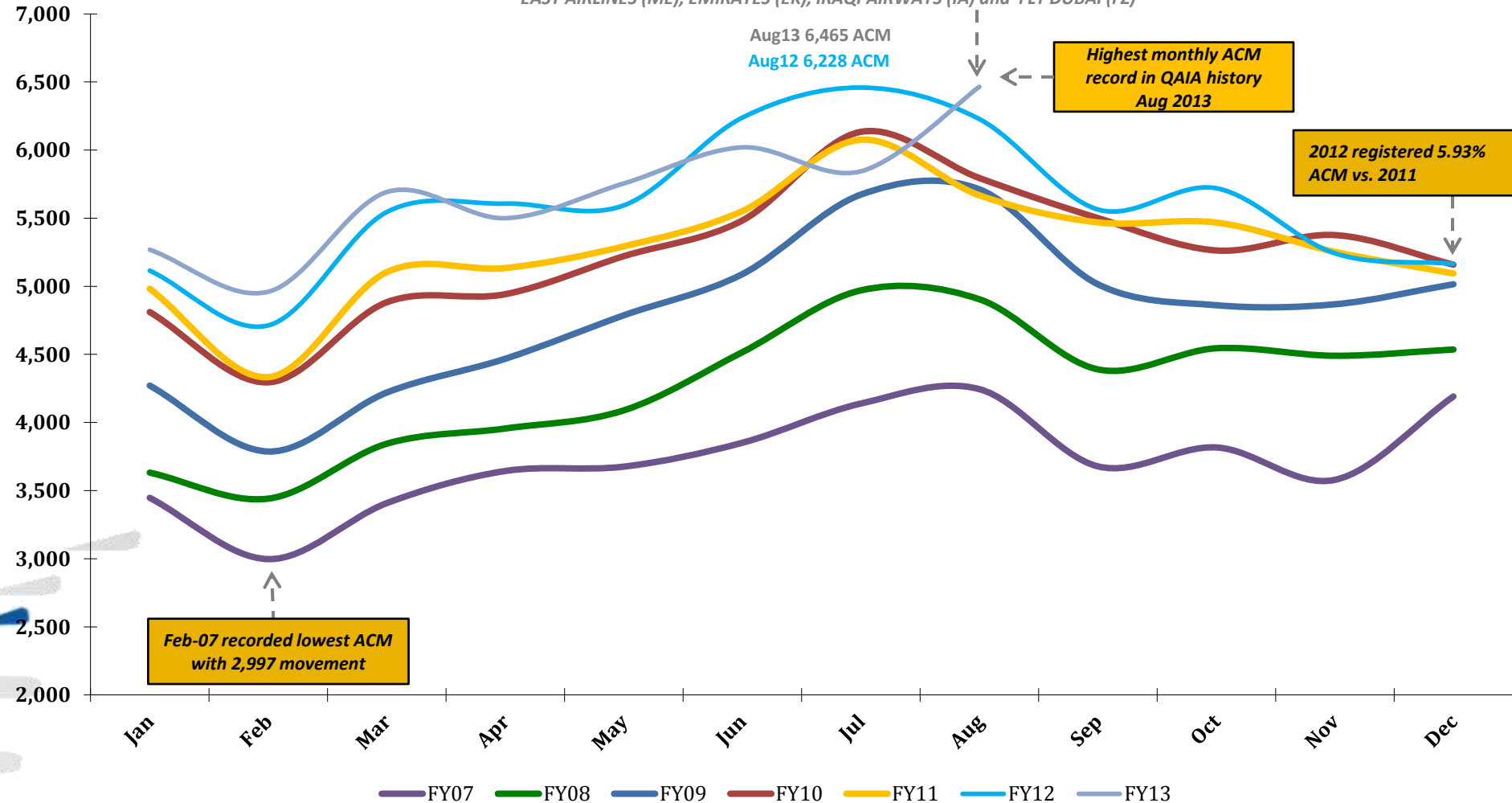
Aug13 694,343 PAX
Aug12 603,286 PAX



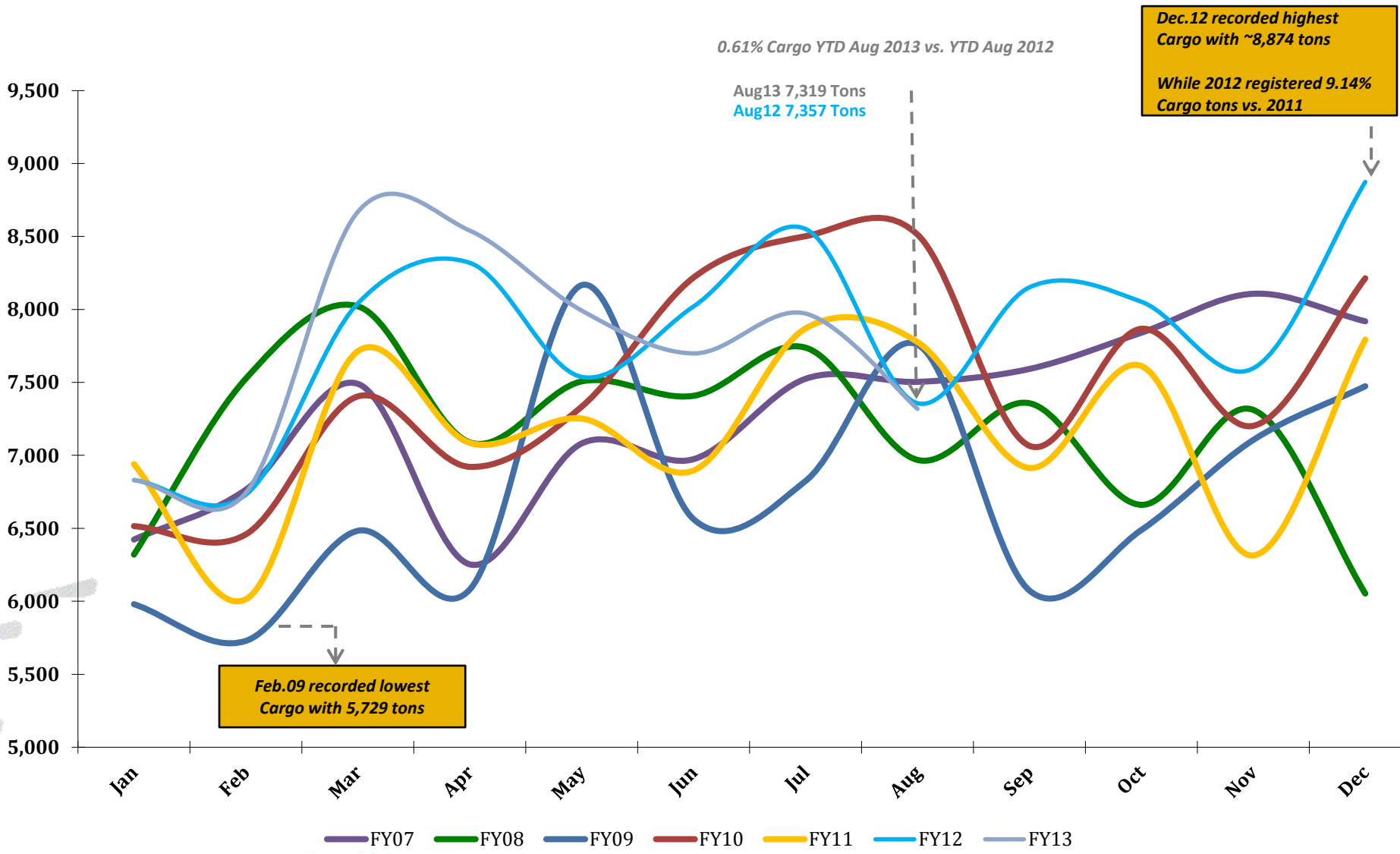
Total ACM per Month FY 2013 vs. Previous Years

+0.01% in ACM YTD Aug 2013 vs. YTD Aug 2012

Top contributing Airlines to this month's growth were ROYAL JORDANIAN (RJ), MIDDLE EAST AIRLINES (ME), EMIRATES (EK), IRAQI AIRWAYS (IA) and FLY DUBAI (FZ)



Total CARGO per Month FY 2013 vs. Previous Years



Traffic Data - Public Stats

August 31, 2013

TOTAL ARRIVAL PAX			
Month	FY13	FY12	Var %
Jan	217,768	218,154	-0.18%
Feb	234,762	221,181	6.14%
Mar	284,339	259,065	9.76%
Apr	268,841	263,436	2.05%
May	274,710	242,336	13.36%
Jun	332,790	336,813	-1.19%
Jul	287,985	313,059	-8.01%
Aug	336,626	289,430	16.31%
Sep	0	244,151	0.00%
Oct	0	266,026	0.00%
Nov	0	217,971	0.00%
Dec	0	222,066	0.00%
YTD August	2,237,821	2,143,474	4.40%
Total	2,237,821	3,093,688	

TOTAL DEPARTURE PAX		
FY13	FY12	Var %
257,301	245,074	4.99%
212,832	204,410	4.12%
265,522	247,124	7.44%
267,718	265,784	0.73%
260,188	237,320	9.64%
289,839	282,802	2.49%
259,636	341,407	-23.95%
357,717	313,856	13.97%
0	301,790	0.00%
0	260,558	0.00%
0	237,013	0.00%
0	219,222	0.00%
2,170,753	2,137,777	1.54%
2,170,753	3,156,360	

TOTAL PAX COMBINED		
FY13	FY12	Var %
475,069	463,228	2.56%
447,594	425,591	5.17%
549,861	506,189	8.63%
536,559	529,220	1.39%
534,898	479,656	11.52%
622,629	619,615	0.49%
547,621	654,466	-16.33%
694,343	603,286	15.09%
0	545,941	0.00%
0	526,584	0.00%
0	454,984	0.00%
0	441,288	0.00%
4,408,574	4,281,251	2.97%
4,408,574	6,250,048	

TOTAL ARRIVAL ACM			
Month	FY13	FY12	Var %
Jan	2,634	2,555	3.09%
Feb	2,477	2,363	4.82%
Mar	2,848	2,769	2.85%
Apr	2,747	2,807	-2.14%
May	2,878	2,792	3.08%
Jun	3,014	3,120	-3.40%
Jul	2,923	3,230	-9.50%
Aug	3,231	3,114	3.76%
Sep	0	2,786	0.00%
Oct	0	2,860	0.00%
Nov	0	2,621	0.00%
Dec	0	2,585	0.00%
YTD August	22,752	22,750	0.01%
Total	22,752	33,602	

TOTAL DEPARTURE ACM		
FY13	FY12	Var %
2,635	2,560	2.93%
2,483	2,350	5.66%
2,844	2,776	2.45%
2,753	2,800	-1.68%
2,877	2,802	2.68%
3,006	3,118	-3.59%
2,921	3,229	-9.54%
3,234	3,114	3.85%
0	2,778	0.00%
0	2,860	0.00%
0	2,621	0.00%
0	2,580	0.00%
22,753	22,749	0.02%
22,753	33,588	

TOTAL ACM COMBINED		
FY13	FY12	Var %
5,269	5,115	3.01%
4,960	4,713	5.24%
5,692	5,545	2.65%
5,500	5,607	-1.91%
5,755	5,594	2.88%
6,020	6,238	-3.49%
5,844	6,459	-9.52%
6,465	6,228	3.81%
0	5,564	0.00%
0	5,720	0.00%
0	5,242	0.00%
0	5,165	0.00%
45,505	45,499	0.01%
45,505	67,190	

TOTAL ARRIVAL CARGO TONS			
Month	FY13	FY12	Var %
Jan	4,075	3,960	2.91%
Feb	4,005	4,046	-1.03%
Mar	5,170	4,716	9.62%
Apr	5,151	5,061	1.78%
May	4,945	4,284	15.44%
Jun	4,748	4,945	-3.98%
Jul	5,020	5,148	-2.47%
Aug	4,249	4,748	-10.52%
Sep	0	5,034	0.00%
Oct	0	5,196	0.00%
Nov	0	4,549	0.00%
Dec	0	5,415	0.00%
YTD August	37,363	36,908	1.23%
Total	37,363	57,101	

TOTAL DEPARTURE CARGO TONS		
FY13	FY12	Var %
2,756	2,871	-4.02%
2,740	2,684	2.07%
3,499	3,325	5.23%
3,389	3,258	4.02%
3,047	3,254	-6.36%
2,951	3,076	-4.08%
2,951	3,404	-13.30%
3,070	2,609	17.66%
0	3,118	0.00%
0	2,857	0.00%
0	3,048	0.00%
0	3,459	0.00%
24,402	24,481	-0.32%
24,402	36,963	

TOTAL CARGO COMBINED TONS		
FY13	FY12	Var %
6,831	6,831	0.00%
6,744	6,731	0.20%
8,669	8,041	7.80%
8,540	8,319	2.66%
7,992	7,538	6.03%
7,699	8,021	-4.02%
7,971	8,551	-6.78%
7,319	7,357	-0.53%
0	8,152	0.00%
0	8,053	0.00%
0	7,597	0.00%
0	8,874	0.00%
61,765	61,389	0.61%
61,765	94,064	