



Airport International Group  
مجموعة المطار الدولي

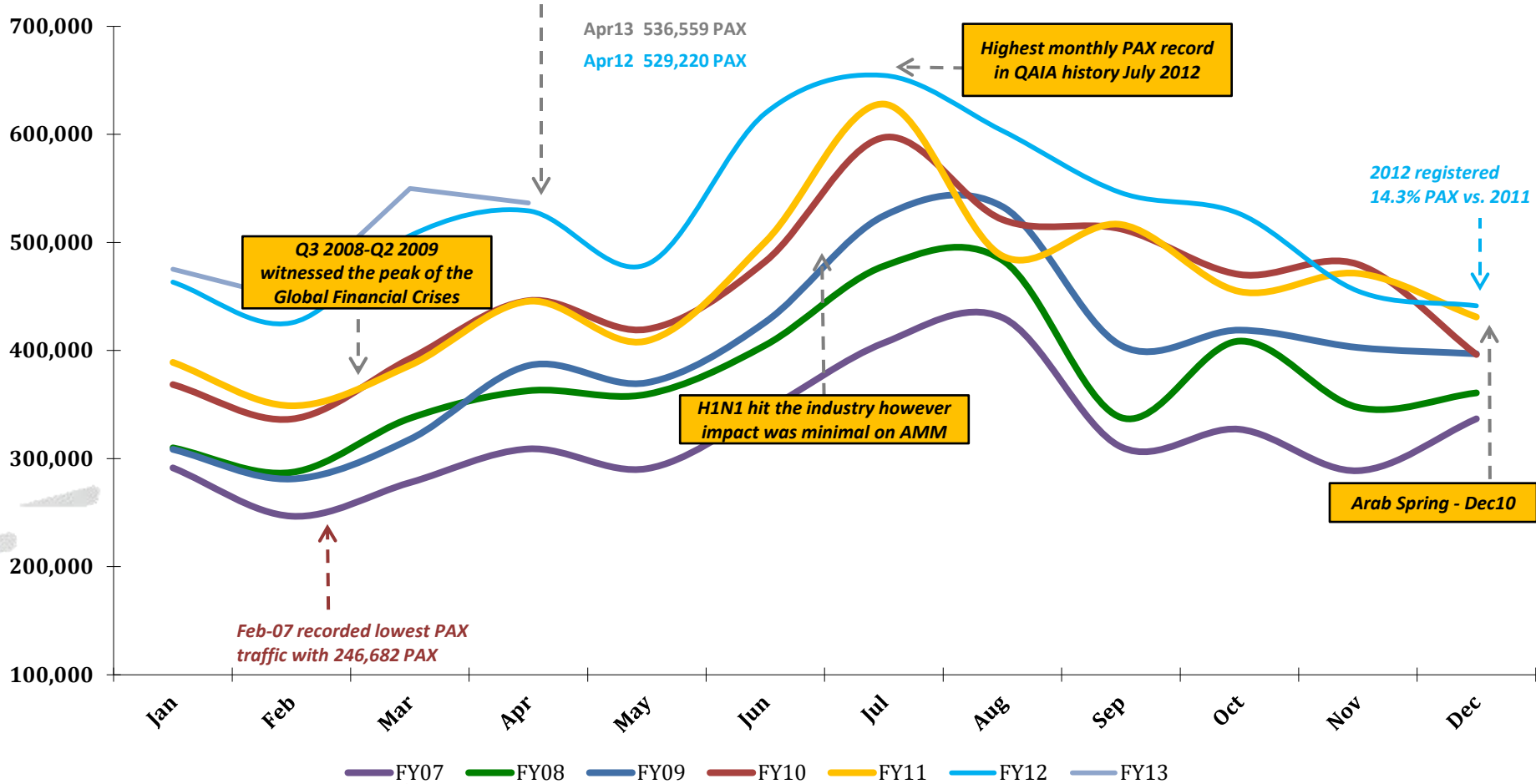
***QAIA MONTHLY  
TRAFFIC STATISTICS  
APRIL 2013***



# Total PAX per Month FY 2013 vs. Previous Years

+4.4% in PAX YTD Apr 2013 vs. YTD Apr 2012

Top contributing Destinations to this month's growth were Dubai (DXB), Beirut (BEY), Madinah (MED), Cairo (CAI), and Algiers (ALG)



# Total ACM per Month FY 2013 vs. Previous Years

+2.10% in ACM YTD Apr 2013 vs. YTD Apr 2012

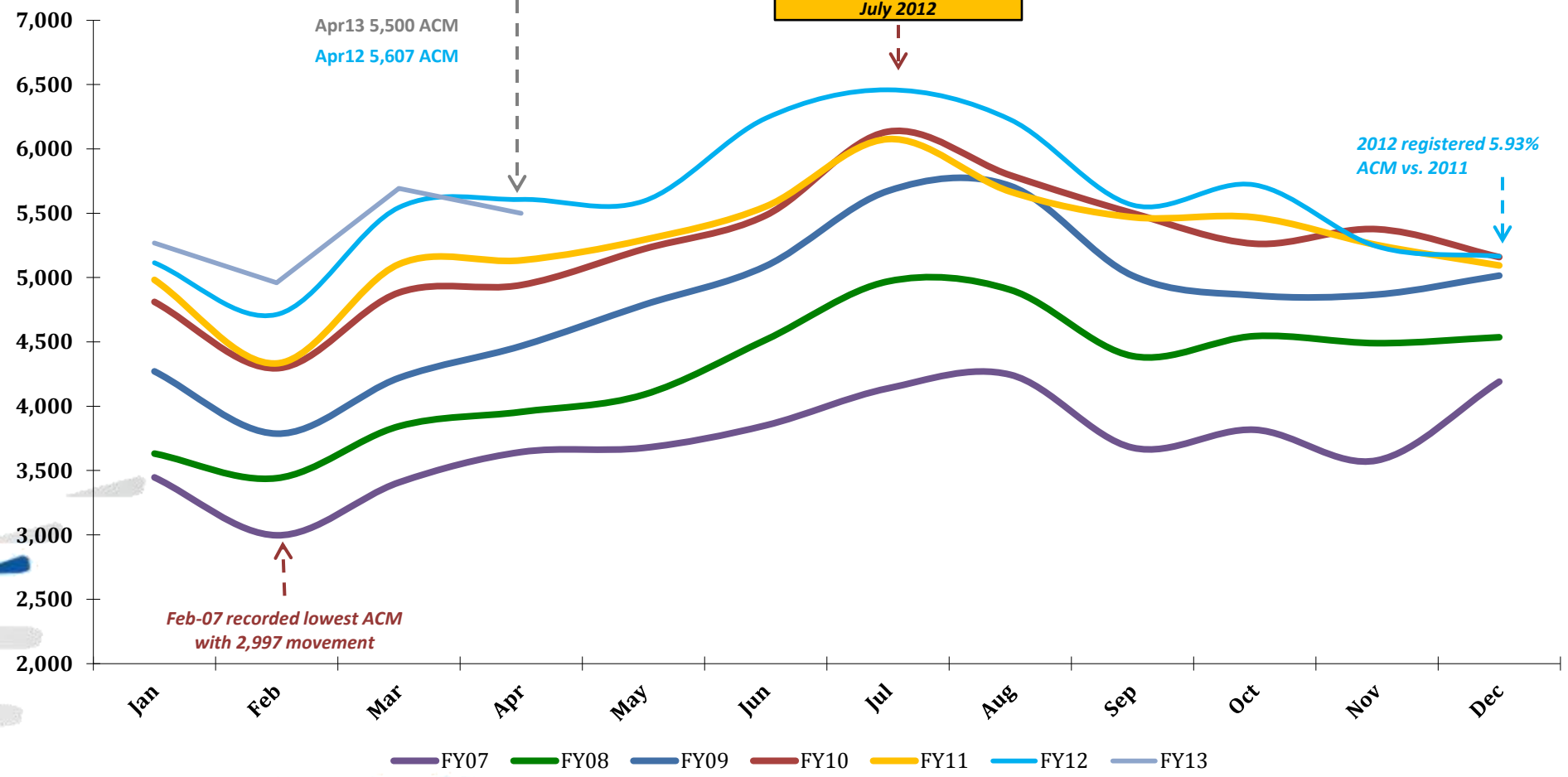
Top contributing Airlines to this month's growth were EMIRATES (EK), GULF AIR (GF), NATIONAL AIR SERVICES (XY), MIDDLE EAST AIRLINES (ME) and OMAN AIR (WY)

Highest monthly ACM record in QAIA history July 2012

2012 registered 5.93% ACM vs. 2011

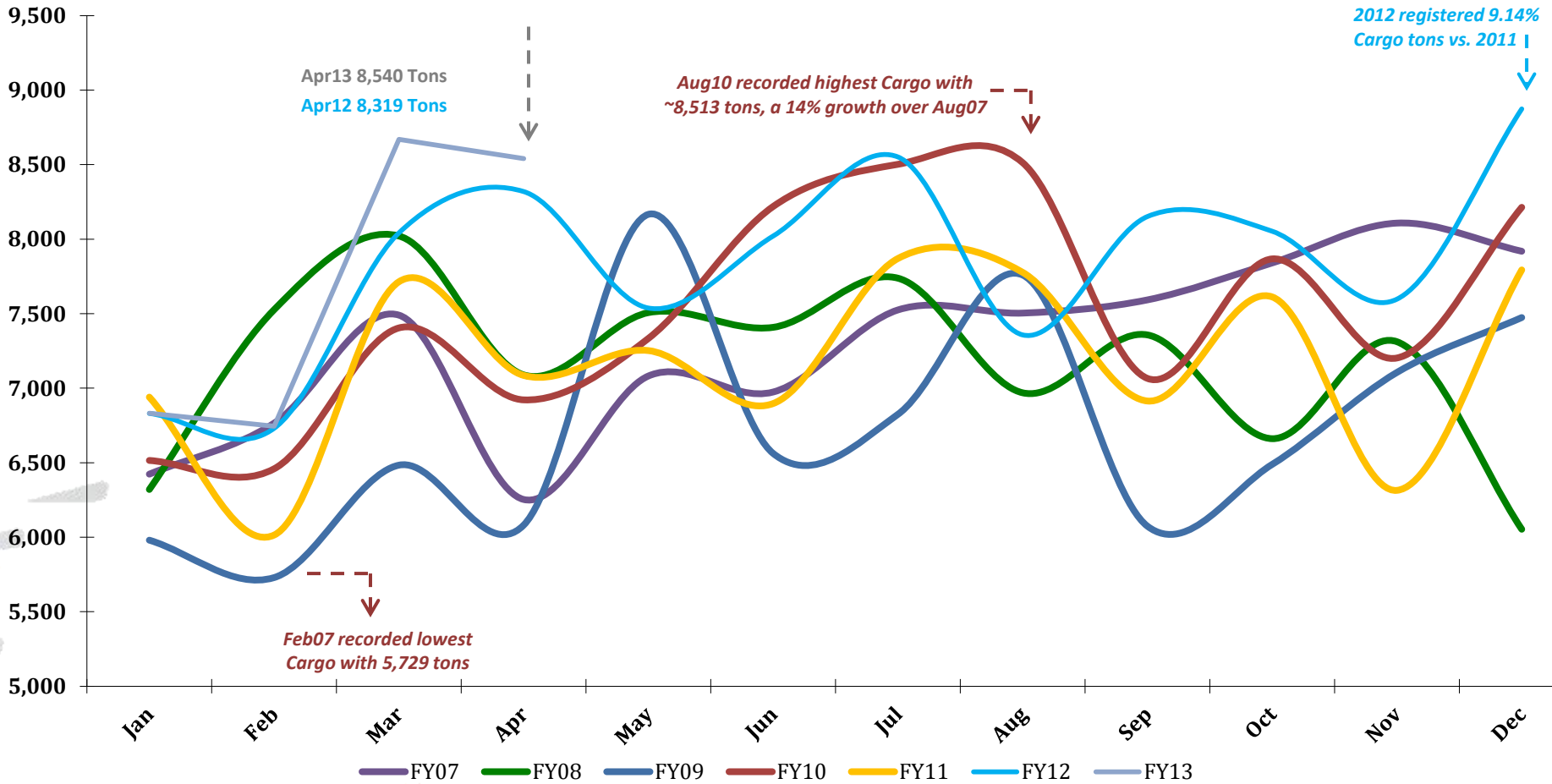
Feb-07 recorded lowest ACM with 2,997 movement

Apr13 5,500 ACM  
Apr12 5,607 ACM



# Total CARGO per Month FY 2013 vs. Previous Years

+2.88% Cargo YTD Apr 2013 vs. YTD Apr 2012



# Traffic Data - Public Stats

## April 30, 2013

TOTAL ARRIVAL PAX			
Month	FY13	FY12	Var %
Jan	217,768	218,154	-0.18%
Feb	234,762	221,181	6.14%
Mar	284,339	259,065	9.76%
Apr	268,841	263,436	2.05%
May	0	242,336	0.00%
Jun	0	336,813	0.00%
Jul	0	313,059	0.00%
Aug	0	289,430	0.00%
Sep	0	244,151	0.00%
Oct	0	266,026	0.00%
Nov	0	217,971	0.00%
Dec	0	222,066	0.00%
YTD April	1,005,710	961,836	4.56%
<b>Total</b>	<b>1,005,710</b>	<b>3,093,688</b>	

TOTAL DEPARTURE PAX		
FY13	FY12	Var %
257,301	245,074	4.99%
212,832	204,410	4.12%
265,522	247,124	7.44%
267,718	265,784	0.73%
0	237,320	0.00%
0	282,802	0.00%
0	341,407	0.00%
0	313,856	0.00%
0	301,790	0.00%
0	260,558	0.00%
0	237,013	0.00%
0	219,222	0.00%
1,003,373	962,392	4.26%
<b>1,003,373</b>	<b>3,156,360</b>	

TOTAL PAX COMBINED		
FY13	FY12	Var %
475,069	463,228	2.56%
447,594	425,591	5.17%
549,861	506,189	8.63%
536,559	529,220	1.39%
0	479,656	0.00%
0	619,615	0.00%
0	654,466	0.00%
0	603,286	0.00%
0	545,941	0.00%
0	526,584	0.00%
0	454,984	0.00%
0	441,288	0.00%
2,009,083	1,924,228	4.41%
<b>2,009,083</b>	<b>6,250,048</b>	

TOTAL ARRIVAL ACM			
Month	FY13	FY12	Var %
Jan	2,634	2,555	3.09%
Feb	2,477	2,363	4.82%
Mar	2,848	2,769	2.85%
Apr	2,747	2,807	-2.14%
May	0	2,792	0.00%
Jun	0	3,120	0.00%
Jul	0	3,230	0.00%
Aug	0	3,114	0.00%
Sep	0	2,786	0.00%
Oct	0	2,860	0.00%
Nov	0	2,621	0.00%
Dec	0	2,585	0.00%
YTD April	10,706	10,494	2.02%
<b>Total</b>	<b>10,706</b>	<b>33,602</b>	

TOTAL DEPARTURE ACM		
FY13	FY12	Var %
2,635	2,560	2.93%
2,483	2,350	5.66%
2,844	2,776	2.45%
2,753	2,800	-1.68%
0	2,802	0.00%
0	3,118	0.00%
0	3,229	0.00%
0	3,114	0.00%
0	2,778	0.00%
0	2,860	0.00%
0	2,621	0.00%
0	2,580	0.00%
10,715	10,486	2.18%
<b>10,715</b>	<b>33,588</b>	

TOTAL ACM COMBINED		
FY13	FY12	Var %
5,269	5,115	3.01%
4,960	4,713	5.24%
5,692	5,545	2.65%
5,500	5,607	-1.91%
0	5,594	0.00%
0	6,238	0.00%
0	6,459	0.00%
0	6,228	0.00%
0	5,564	0.00%
0	5,720	0.00%
0	5,242	0.00%
0	5,165	0.00%
21,421	20,980	2.10%
<b>21,421</b>	<b>67,190</b>	

TOTAL ARRIVAL CARGO TONS			
Month	FY13	FY12	Var %
Jan	4,075	3,960	2.91%
Feb	4,005	4,046	-1.03%
Mar	5,170	4,716	9.62%
Apr	5,151	5,061	1.78%
May	0	4,284	0.00%
Jun	0	4,945	0.00%
Jul	0	5,148	0.00%
Aug	0	4,748	0.00%
Sep	0	5,034	0.00%
Oct	0	5,196	0.00%
Nov	0	4,549	0.00%
Dec	0	5,415	0.00%
YTD April	18,401	17,784	3.47%
<b>Total</b>	<b>18,401</b>	<b>57,101</b>	

TOTAL DEPARTURE CARGO TONS		
FY13	FY12	Var %
2,756	2,871	-4.02%
2,740	2,684	2.07%
3,499	3,325	5.23%
3,389	3,258	4.02%
0	3,254	0.00%
0	3,076	0.00%
0	3,404	0.00%
0	2,609	0.00%
0	3,118	0.00%
0	2,857	0.00%
0	3,048	0.00%
0	3,459	0.00%
12,383	12,138	2.02%
<b>12,383</b>	<b>36,963</b>	

TOTAL CARGO COMBINED TONS		
FY13	FY12	Var %
6,831	6,831	0.00%
6,744	6,731	0.20%
8,669	8,041	7.80%
8,540	8,319	2.66%
0	7,538	0.00%
0	8,021	0.00%
0	8,551	0.00%
0	7,357	0.00%
0	8,152	0.00%
0	8,053	0.00%
0	7,597	0.00%
0	8,874	0.00%
30,784	29,922	2.88%
<b>30,784</b>	<b>94,064</b>	