



Airport International Group  
مجموعة المطار الدولي

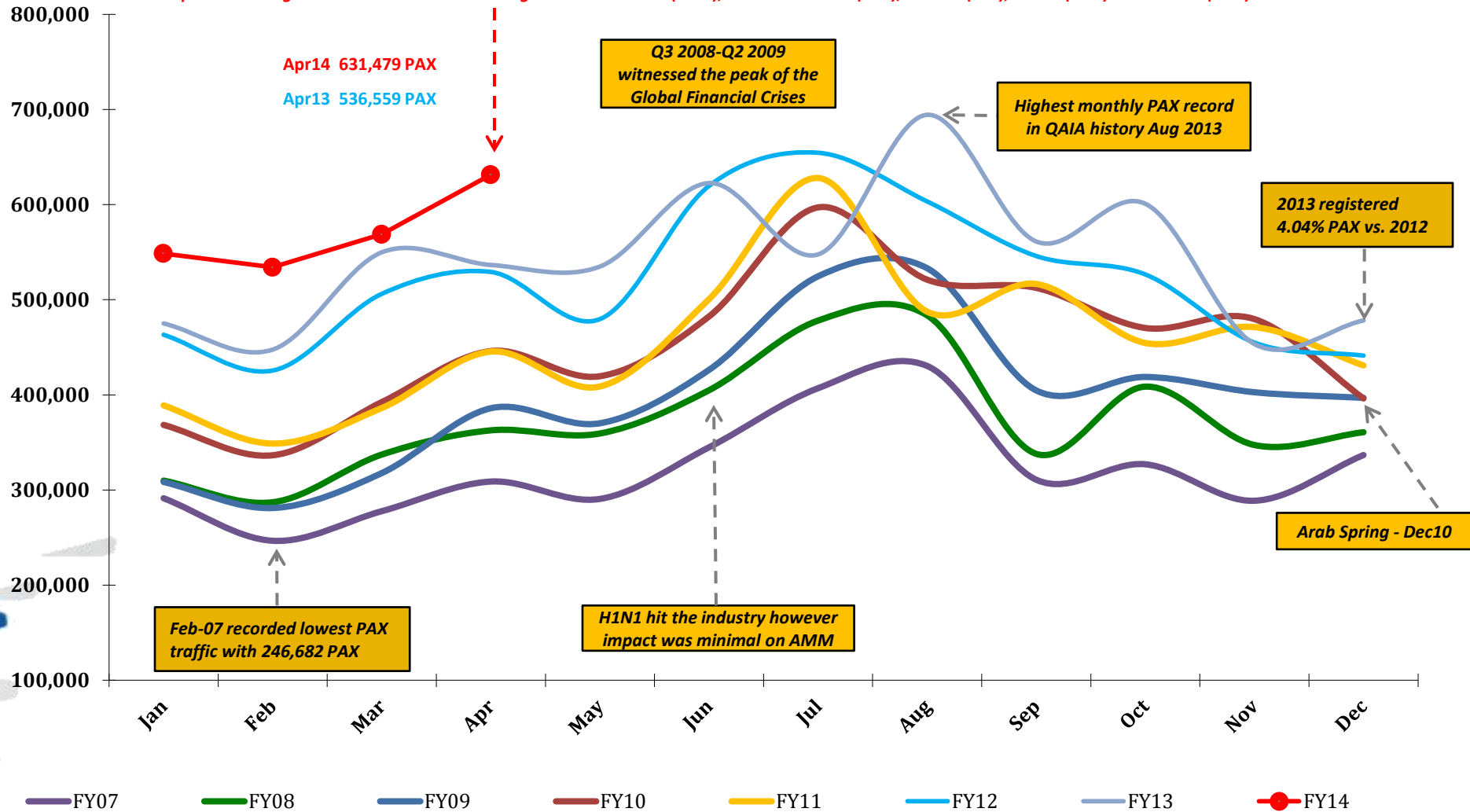
***QAIA MONTHLY  
TRAFFIC STATISTICS  
APRIL 2014***



# Total PAX per Month FY 2014 vs. Previous Years

+13.63% in PAX YTD Apr 2014 vs. YTD Apr 2013

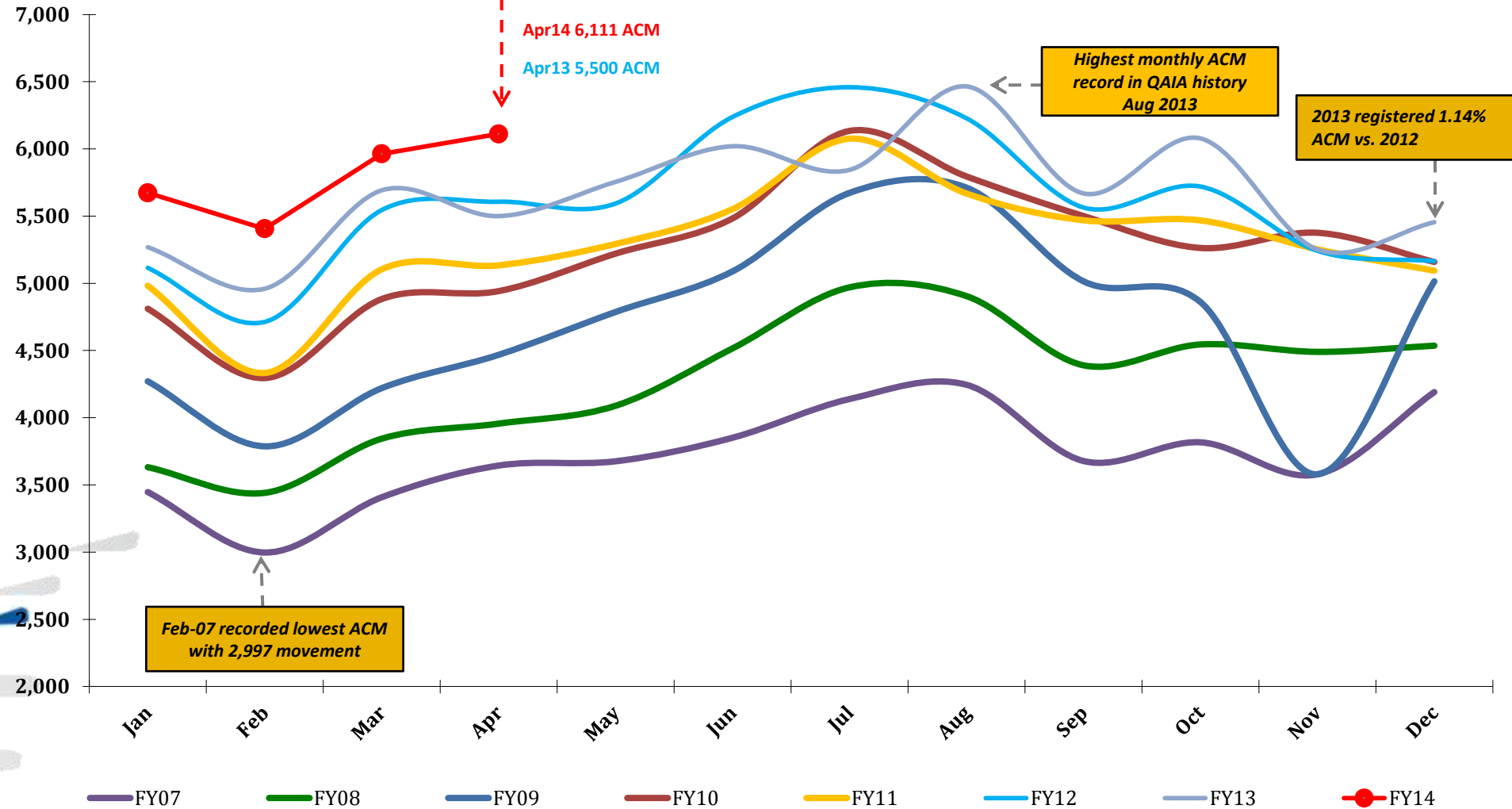
Top contributing Destinations to this month's growth were Doha (DOH), Sharm El Sheikh (SSH), Jeddah (JED), Dubai (DXB) and Kuwait (KWI)



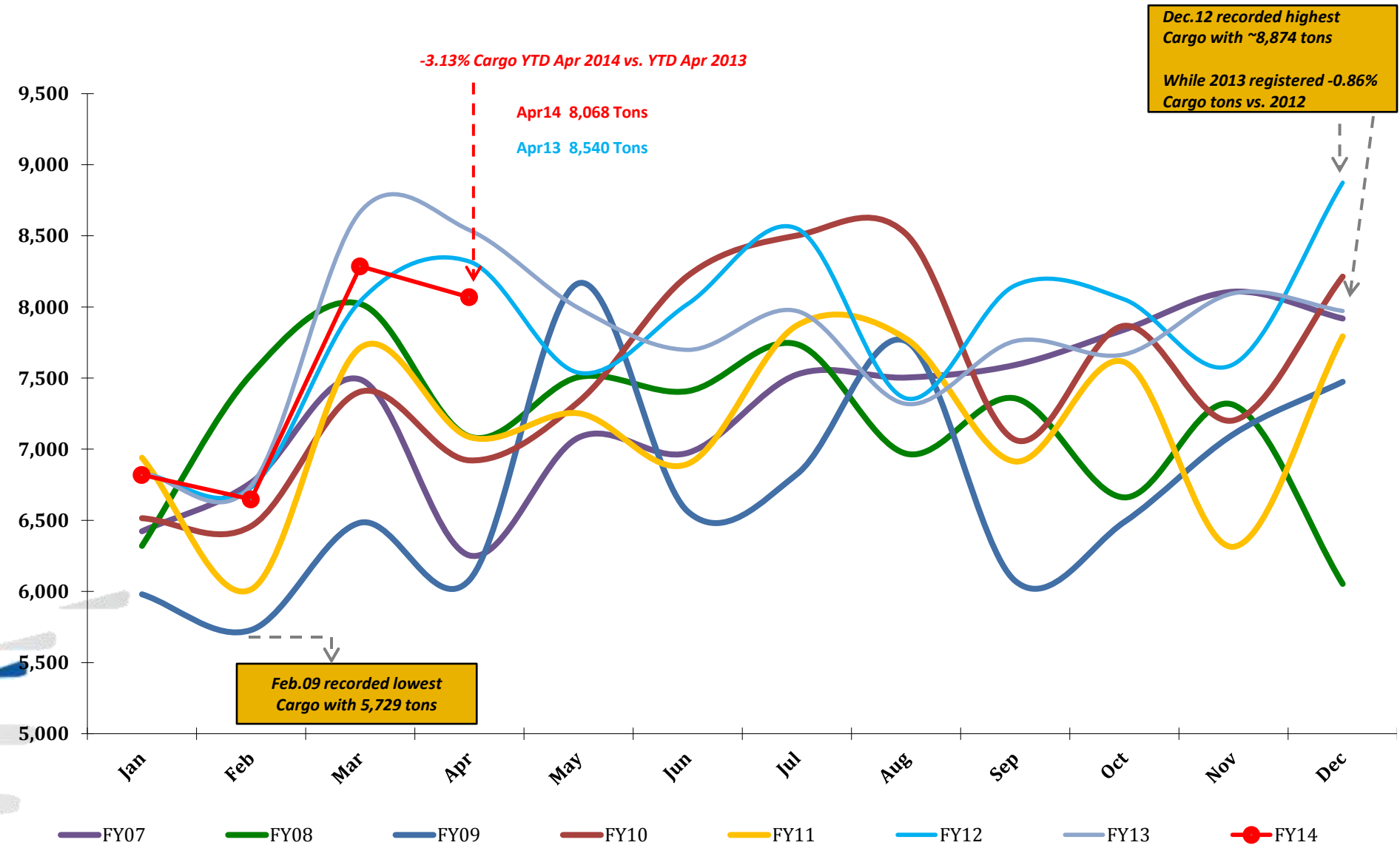
# Total ACM per Month FY 2014 vs. Previous Years

+8.09% in ACM YTD Apr 2014 vs. YTD Apr 2013

Top contributing Airlines to this month's growth were ROYAL JORDANIAN (RJA), QATAR AIRWAYS (QTR), ROYAL WINGS (RWA), JORDAN AVIATION (JAV), ETIHAD AIRWAYS (ETD)



# Total CARGO per Month FY 2014 vs. Previous Years



# Traffic Data - Public Stats

## April 30, 2014

TOTAL ARRIVAL PAX			
Month	FY14	FY13	Var %
Jan	253,274	217,768	16.30%
Feb	273,521	234,762	16.51%
Mar	286,599	284,339	0.79%
Apr	312,366	268,841	0.00%
May	-	274,710	0.00%
Jun	-	332,790	0.00%
Jul	-	287,985	0.00%
Aug	-	336,626	0.00%
Sep	-	248,087	0.00%
Oct	-	300,525	0.00%
Nov	-	217,535	0.00%
Dec	-	237,729	0.00%
YTD April	1,125,760	1,005,710	11.94%
<b>Total</b>	<b>1,125,760</b>	<b>3,241,697</b>	

TOTAL DEPARTURE PAX		
FY14	FY13	Var %
295,285	257,301	14.76%
260,601	212,832	22.44%
282,135	265,522	6.26%
319,113	267,718	0.00%
-	260,188	0.00%
-	289,839	0.00%
-	259,636	0.00%
-	357,717	0.00%
-	313,118	0.00%
-	300,330	0.00%
-	235,909	0.00%
-	240,516	0.00%
1,157,134	1,003,373	15.32%
<b>1,157,134</b>	<b>3,260,626</b>	

TOTAL PAX COMBINED		
FY14	FY13	Var %
548,559	475,069	15.47%
534,122	447,594	19.33%
568,734	549,861	3.43%
631,479	536,559	0.00%
-	534,898	0.00%
-	622,629	0.00%
-	547,621	0.00%
-	694,343	0.00%
-	561,205	0.00%
-	600,855	0.00%
-	453,444	0.00%
-	478,245	0.00%
2,282,894	2,009,083	13.63%
<b>2,282,894</b>	<b>6,502,323</b>	

TOTAL ARRIVAL ACM			
Month	FY14	FY13	Var %
Jan	2,838	2,634	7.74%
Feb	2,703	2,477	9.12%
Mar	2,989	2,848	4.95%
Apr	3,055	2,747	0.00%
May	-	2,878	0.00%
Jun	-	3,014	0.00%
Jul	-	2,923	0.00%
Aug	-	3,231	0.00%
Sep	-	2,843	0.00%
Oct	-	3,033	0.00%
Nov	-	2,630	0.00%
Dec	-	2,725	0.00%
YTD April	11,585	10,706	8.21%
<b>Total</b>	<b>11,585</b>	<b>33,983</b>	

TOTAL DEPARTURE ACM		
FY14	FY13	Var %
2,835	2,635	7.59%
2,703	2,483	8.86%
2,974	2,844	4.57%
3,056	2,753	0.00%
-	2,877	0.00%
-	3,006	0.00%
-	2,921	0.00%
-	3,234	0.00%
-	2,826	0.00%
-	3,045	0.00%
-	2,622	0.00%
-	2,730	0.00%
11,568	10,715	7.96%
<b>11,568</b>	<b>33,976</b>	

TOTAL ACM COMBINED		
FY14	FY13	Var %
5,673	5,269	7.67%
5,406	4,960	8.99%
5,963	5,692	4.76%
6,111	5,500	0.00%
-	5,755	0.00%
-	6,020	0.00%
-	5,844	0.00%
-	6,465	0.00%
-	5,669	0.00%
-	6,078	0.00%
-	5,252	0.00%
-	5,455	0.00%
23,153	21,421	8.09%
<b>23,153</b>	<b>67,959</b>	

TOTAL ARRIVAL CARGO TONS			
Month	FY14	FY13	Var %
Jan	4,153	4,075	1.90%
Feb	4,303	4,005	7.46%
Mar	5,508	5,170	6.55%
Apr	5,009	5,151	0.00%
May	-	4,945	0.00%
Jun	-	4,748	0.00%
Jul	-	5,020	0.00%
Aug	-	4,249	0.00%
Sep	-	4,751	0.00%
Oct	-	4,850	0.00%
Nov	-	4,883	0.00%
Dec	-	4,890	0.00%
YTD April	18,974	18,401	3.11%
<b>Total</b>	<b>18,974</b>	<b>56,737</b>	

TOTAL DEPARTURE CARGO TONS		
FY14	FY13	Var %
2,666	2,756	-3.25%
2,344	2,740	-14.44%
2,777	3,499	-20.65%
3,058	3,389	0.00%
-	3,047	0.00%
-	2,951	0.00%
-	2,951	0.00%
-	3,070	0.00%
-	3,009	0.00%
-	2,817	0.00%
-	3,213	0.00%
-	3,082	0.00%
10,845	12,383	-12.42%
<b>10,845</b>	<b>36,523</b>	

TOTAL CARGO COMBINED TONS		
FY14	FY13	Var %
6,819	6,831	-0.18%
6,648	6,744	-1.44%
8,285	8,669	-4.43%
8,068	8,540	0.00%
-	7,992	0.00%
-	7,699	0.00%
-	7,971	0.00%
-	7,319	0.00%
-	7,760	0.00%
-	7,666	0.00%
-	8,096	0.00%
-	7,972	0.00%
29,819	30,784	-3.13%
<b>29,819</b>	<b>93,260</b>	