



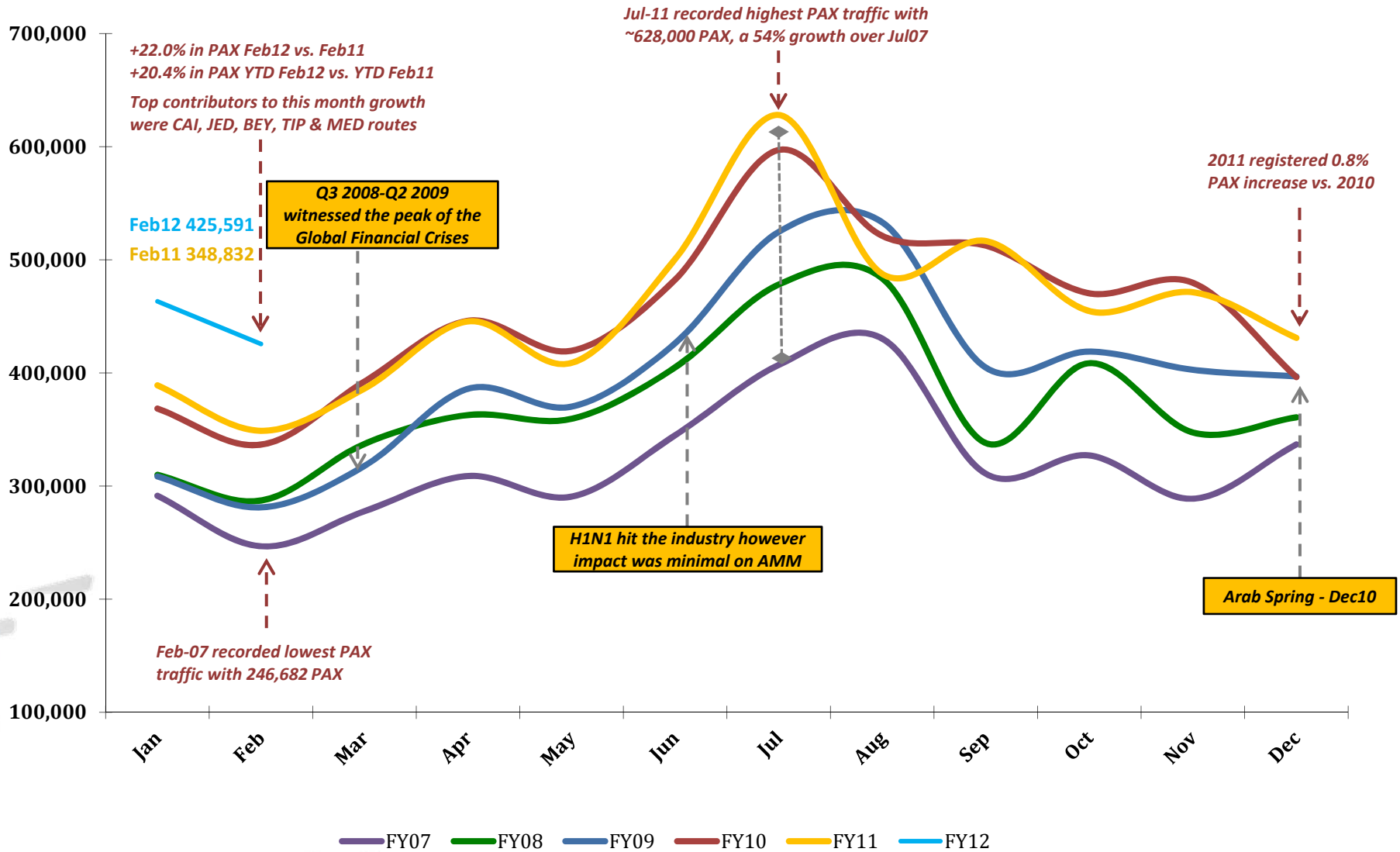
Airport International Group

مجموعة المطار الدولي

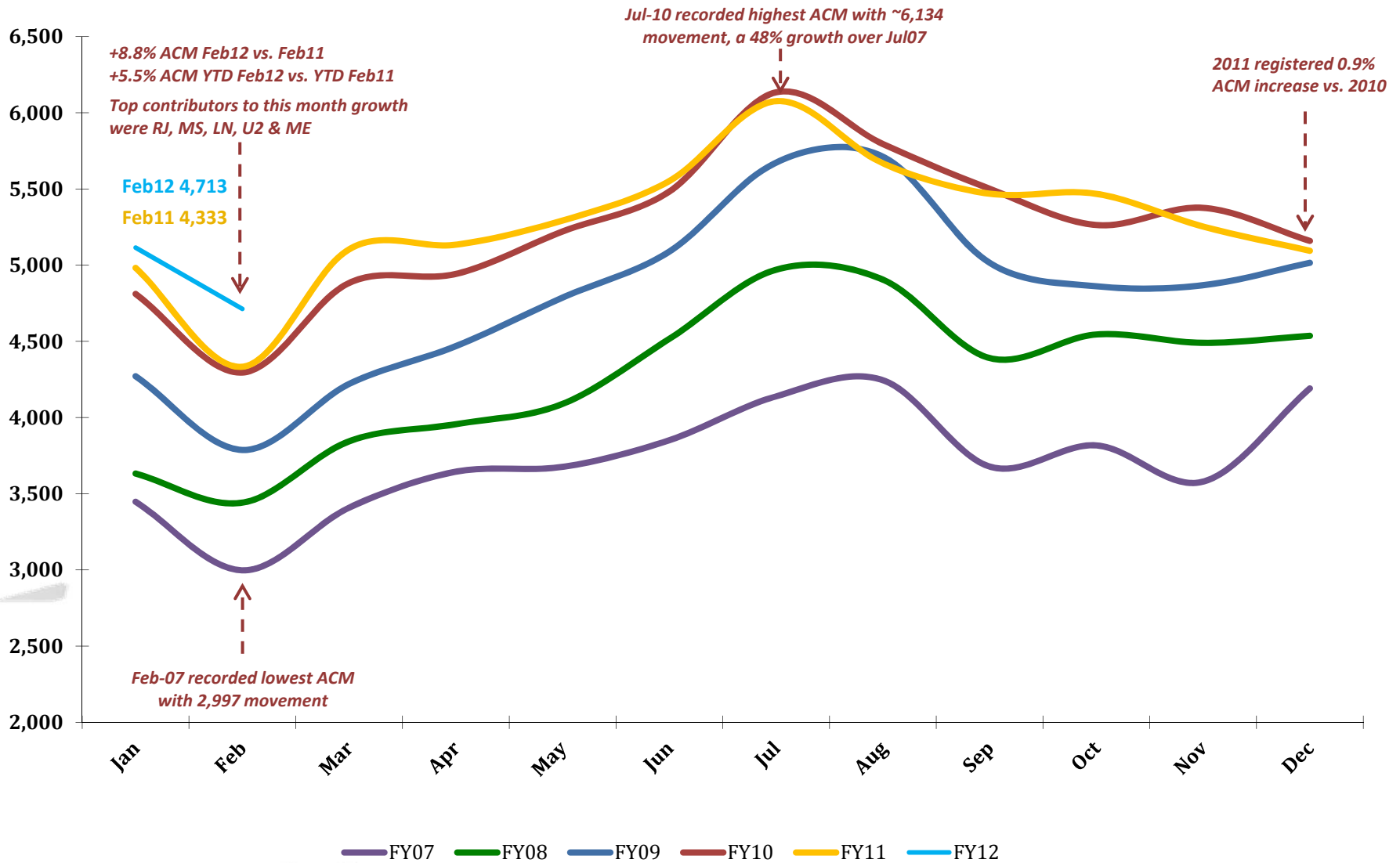
***QAIA MONTHLY
TRAFFIC STATISTICS
FEBRUARY 2012***



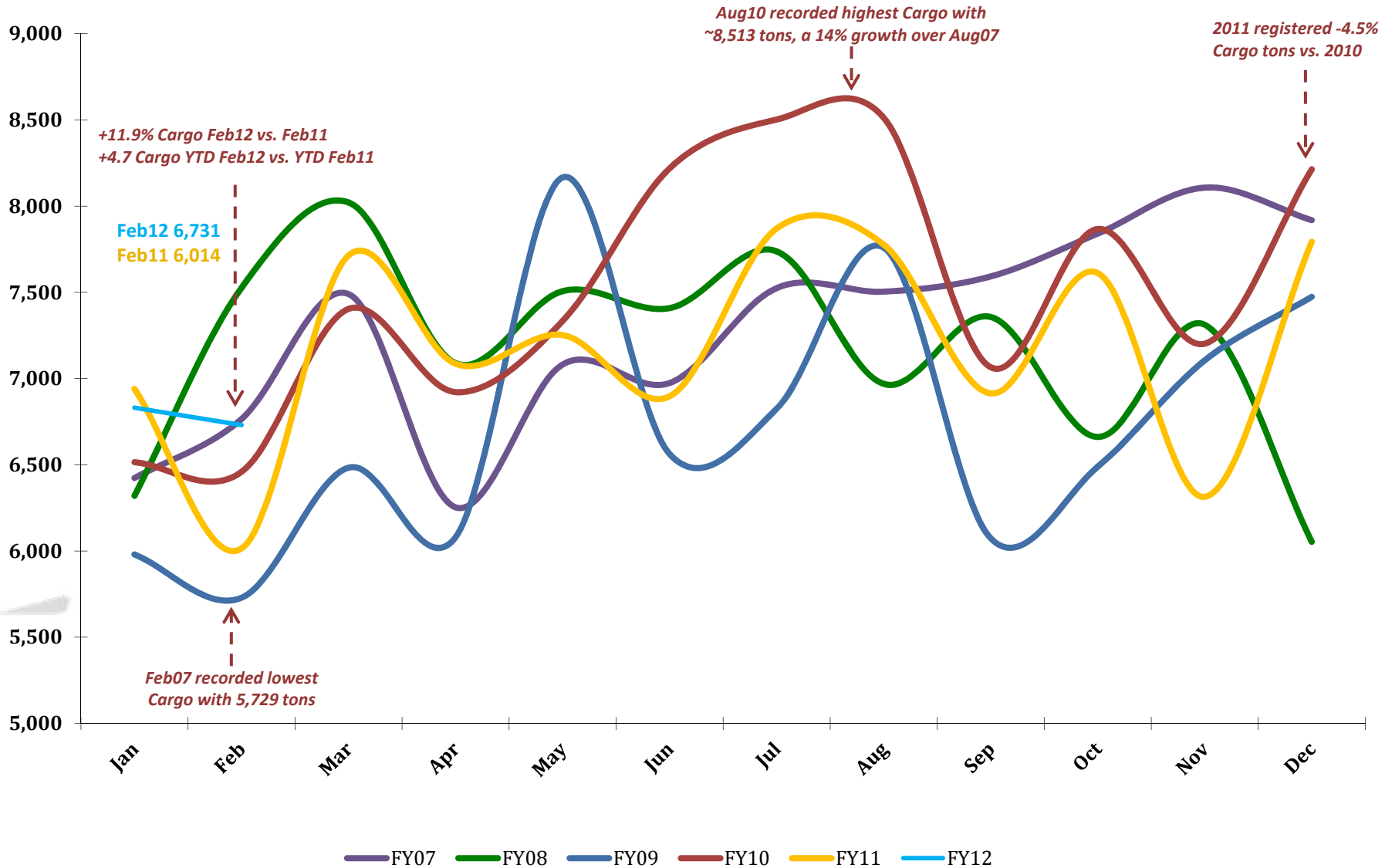
Total PAX per Month FY 2012 vs. Previous Years



Total ACM per Month FY 2012 vs. Previous Years



Total CARGO per Month FY 2012 vs. Previous Years



Traffic Data

TOTAL ARRIVAL PAX			
Month	FY12	FY11	Var %
Jan	218,154	177,386	22.98%
Feb	221,181	182,889	20.94%
Mar		197,952	0.00%
Apr		222,993	0.00%
May		208,811	0.00%
Jun		278,591	0.00%
Jul		322,221	0.00%
Aug		225,339	0.00%
Sep		230,895	0.00%
Oct		227,821	0.00%
Nov		230,905	0.00%
Dec		219,027	0.00%
YTD February	439,335	360,275	21.94%
Total	439,335	2,724,830	

TOTAL DEPARTURE PAX		
FY12	FY11	Var %
245,074	211,614	15.81%
204,410	165,943	23.18%
	188,251	0.00%
	222,533	0.00%
	200,016	0.00%
	221,971	0.00%
	305,748	0.00%
	262,141	0.00%
	285,658	0.00%
	226,741	0.00%
	240,357	0.00%
	211,923	0.00%
449,484	377,557	19.05%
449,484	2,742,896	

TOTAL PAX COMBINED		
FY12	FY11	Var %
463,228	389,000	19.08%
425,591	348,832	22.00%
	386,203	0.00%
	445,526	0.00%
	408,827	0.00%
	500,562	0.00%
	627,969	0.00%
	487,480	0.00%
	516,553	0.00%
	454,562	0.00%
	471,262	0.00%
	430,950	0.00%
888,819	737,832	20.46%
888,819	5,467,726	

TOTAL ARRIVAL ACM			
Month	FY12	FY11	Var %
Jan	2,555	2,487	2.73%
Feb	2,363	2,167	9.04%
Mar		2,556	0.00%
Apr		2,564	0.00%
May		2,645	0.00%
Jun		2,777	0.00%
Jul		3,038	0.00%
Aug		2,833	0.00%
Sep		2,735	0.00%
Oct		2,737	0.00%
Nov		2,628	0.00%
Dec		2,547	0.00%
YTD February	4,918	4,654	5.67%
Total	4,918	31,714	

TOTAL DEPARTURE ACM		
FY12	FY11	Var %
2,560	2,495	2.61%
2,350	2,166	8.49%
	2,548	0.00%
	2,570	0.00%
	2,648	0.00%
	2,775	0.00%
	3,038	0.00%
	2,835	0.00%
	2,734	0.00%
	2,731	0.00%
	2,625	0.00%
	2,547	0.00%
4,910	4,661	5.34%
4,910	31,712	

TOTAL ACM COMBINED		
FY12	FY11	Var %
5,115	4,982	2.67%
4,713	4,333	8.77%
	5,104	0.00%
	5,134	0.00%
	5,293	0.00%
	5,552	0.00%
	6,076	0.00%
	5,668	0.00%
	5,469	0.00%
	5,468	0.00%
	5,253	0.00%
	5,094	0.00%
9,828	9,315	5.51%
9,828	63,426	

TOTAL ARRIVAL CARGO TONS			
Month	FY12	FY11	Var %
Jan	3,960	4,089	-3.16%
Feb	4,046	3,665	10.39%
Mar		4,398	0.00%
Apr		4,248	0.00%
May		4,352	0.00%
Jun		4,024	0.00%
Jul		4,713	0.00%
Aug		4,671	0.00%
Sep		3,989	0.00%
Oct		4,545	0.00%
Nov		3,830	0.00%
Dec		4,759	0.00%
YTD February	8,006	7,755	3.24%
Total	8,006	51,285	

TOTAL DEPARTURE CARGO TONS		
FY12	FY11	Var %
2,871	2,851	0.71%
2,684	2,349	14.28%
	3,315	0.00%
	2,838	0.00%
	2,900	0.00%
	2,872	0.00%
	3,157	0.00%
	3,106	0.00%
	2,925	0.00%
	3,068	0.00%
	2,484	0.00%
	3,034	0.00%
5,555	5,200	6.84%
5,555	34,898	

TOTAL CARGO COMBINED TONS		
FY12	FY11	Var %
6,831	6,940	-1.57%
6,731	6,014	11.91%
	7,714	0.00%
	7,086	0.00%
	7,252	0.00%
	6,897	0.00%
	7,870	0.00%
	7,777	0.00%
	6,914	0.00%
	7,612	0.00%
	6,314	0.00%
	7,794	0.00%
13,561	12,954	4.69%
13,561	86,184	