



Airport International Group
مجموعة المطار الدولي

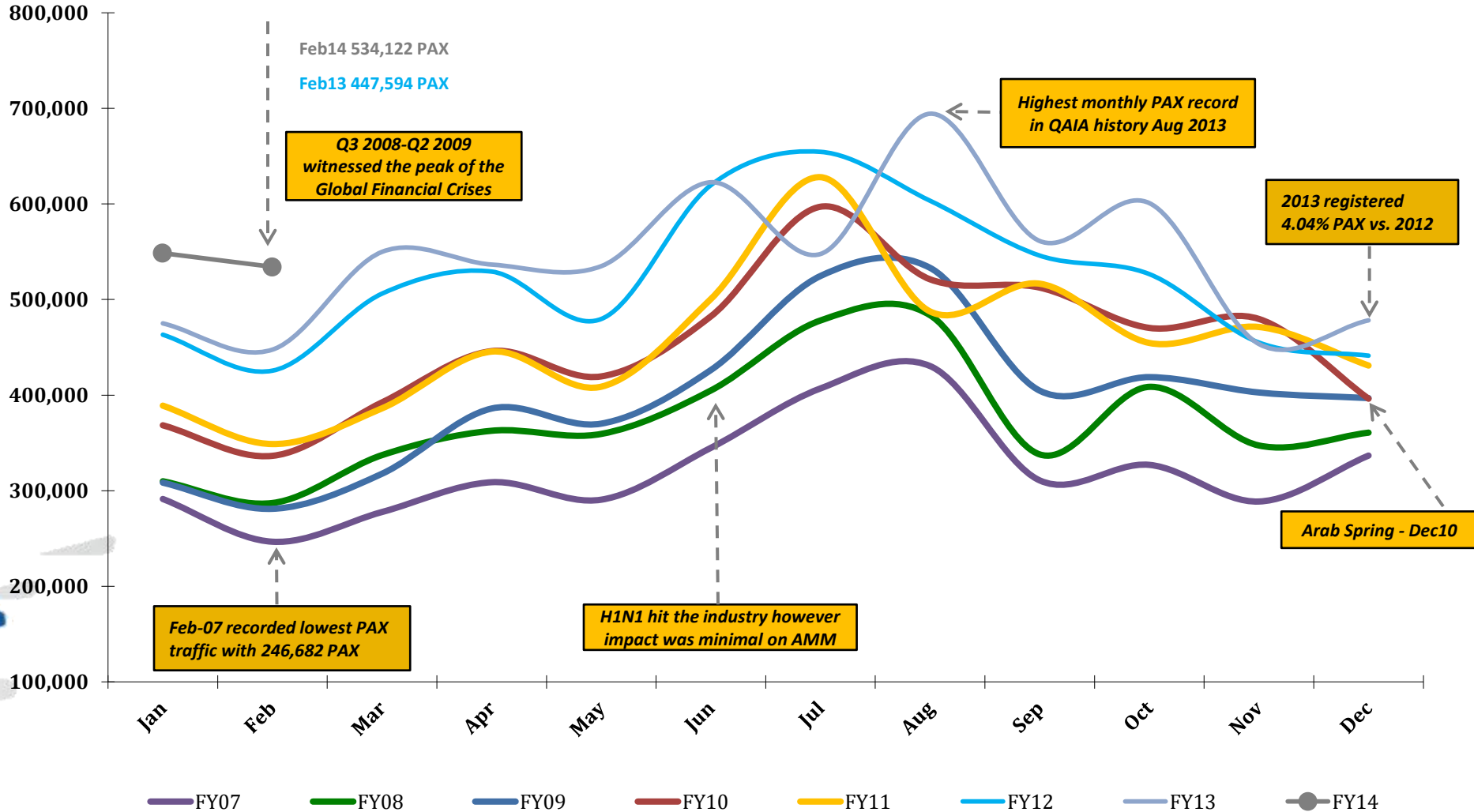
***QAIA MONTHLY
TRAFFIC STATISTICS
FEBRUARY 2014***



Total PAX per Month FY 2014 vs. Previous Years

+17.34% in PAX YTD Feb 2014 vs. YTD Feb 2013

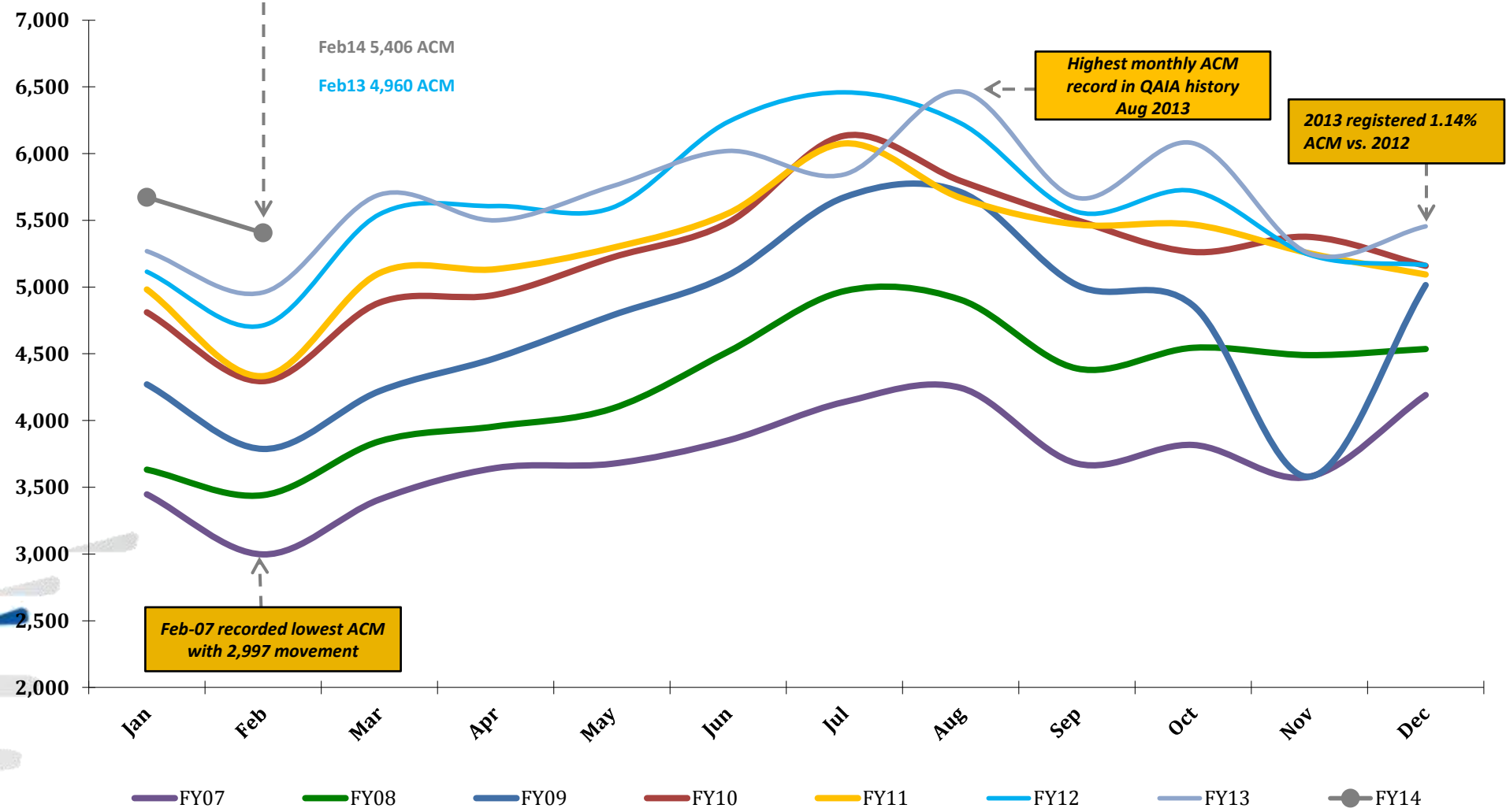
Top contributing Destinations to this month's growth were Jeddah (JED), Doha (DOH), Dubai (DXB), Baghdad (BGW) and Erbil (EBL)



Total ACM per Month FY 2014 vs. Previous Years

+8.31% in ACM YTD Feb 2014 vs. YTD Feb 2013

Top contributing Airlines to this month's growth were ROYAL JORDANIAN AIRLINES (RJA), QATAR AIRWAYS (QTR), IRAQI AIRWAYS (IAW) and JORDAN AVIATION (JAV)



Feb-07 recorded lowest ACM with 2,997 movement

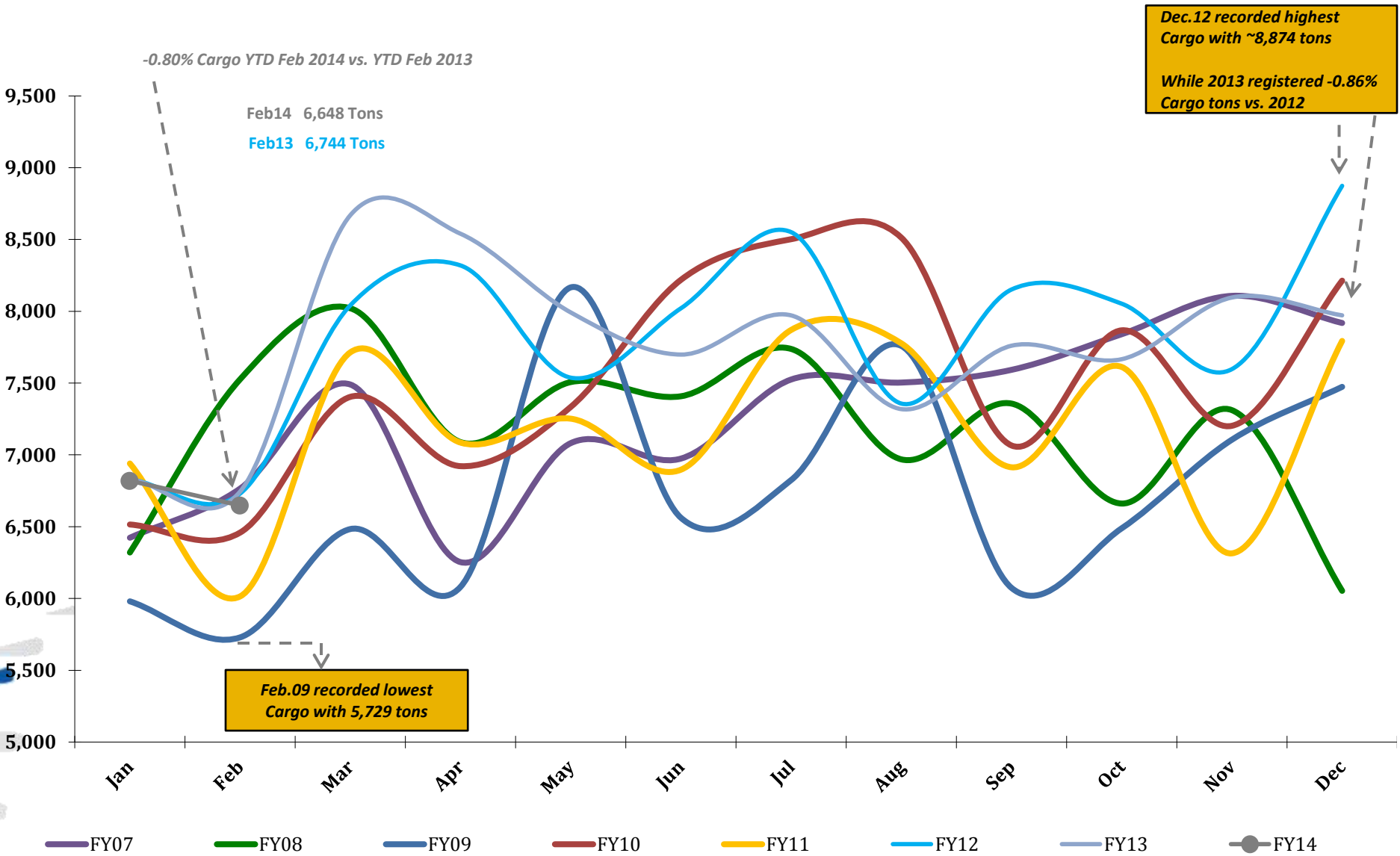
Highest monthly ACM record in QAIA history Aug 2013

2013 registered 1.14% ACM vs. 2012

Feb14 5,406 ACM
Feb13 4,960 ACM

FY07 FY08 FY09 FY10 FY11 FY12 FY13 FY14

Total CARGO per Month FY 2014 vs. Previous Years



Traffic Data - Public Stats

February 28, 2014

TOTAL ARRIVAL PAX			
Month	FY14	FY13	Var %
Jan	253,274	217,768	16.30%
Feb	273,521	234,762	16.51%
Mar	-	284,339	0.00%
Apr	-	268,841	0.00%
May	-	274,710	0.00%
Jun	-	332,790	0.00%
Jul	-	287,985	0.00%
Aug	-	336,626	0.00%
Sep	-	248,087	0.00%
Oct	-	300,525	0.00%
Nov	-	217,535	0.00%
Dec	-	237,729	0.00%
YTD Feb	526,795	452,530	16.41%
Total	526,795	3,241,697	

TOTAL DEPARTURE PAX		
FY14	FY13	Var %
295,285	257,301	14.76%
260,601	212,832	22.44%
-	265,522	0.00%
-	267,718	0.00%
-	260,188	0.00%
-	289,839	0.00%
-	259,636	0.00%
-	357,717	0.00%
-	313,118	0.00%
-	300,330	0.00%
-	235,909	0.00%
-	240,516	0.00%
555,886	470,133	18.24%
555,886	3,260,626	

TOTAL PAX COMBINED		
FY14	FY13	Var %
548,559	475,069	15.47%
534,122	447,594	19.33%
-	549,861	0.00%
-	536,559	0.00%
-	534,898	0.00%
-	622,629	0.00%
-	547,621	0.00%
-	694,343	0.00%
-	561,205	0.00%
-	600,855	0.00%
-	453,444	0.00%
-	478,245	0.00%
1,082,681	922,663	17.34%
1,082,681	6,502,323	

TOTAL ARRIVAL ACM			
Month	FY14	FY13	Var %
Jan	2,838	2,634	7.74%
Feb	2,703	2,477	9.12%
Mar	-	2,848	0.00%
Apr	-	2,747	0.00%
May	-	2,878	0.00%
Jun	-	3,014	0.00%
Jul	-	2,923	0.00%
Aug	-	3,231	0.00%
Sep	-	2,843	0.00%
Oct	-	3,033	0.00%
Nov	-	2,630	0.00%
Dec	-	2,725	0.00%
YTD Feb	5,541	5,111	8.41%
Total	5,541	33,983	

TOTAL DEPARTURE ACM		
FY14	FY13	Var %
2,835	2,635	7.59%
2,703	2,483	8.86%
-	2,844	0.00%
-	2,753	0.00%
-	2,877	0.00%
-	3,006	0.00%
-	2,921	0.00%
-	3,234	0.00%
-	2,826	0.00%
-	3,045	0.00%
-	2,622	0.00%
-	2,730	0.00%
5,538	5,118	8.21%
5,538	33,976	

TOTAL ACM COMBINED		
FY14	FY13	Var %
5,673	5,269	7.67%
5,406	4,960	8.99%
-	5,692	0.00%
-	5,500	0.00%
-	5,755	0.00%
-	6,020	0.00%
-	5,844	0.00%
-	6,465	0.00%
-	5,669	0.00%
-	6,078	0.00%
-	5,252	0.00%
-	5,455	0.00%
11,079	10,229	8.31%
11,079	67,959	

TOTAL ARRIVAL CARGO TONS			
Month	FY14	FY13	Var %
Jan	4,153	4,075	1.90%
Feb	4,303	4,005	7.46%
Mar	-	5,170	0.00%
Apr	-	5,151	0.00%
May	-	4,945	0.00%
Jun	-	4,748	0.00%
Jul	-	5,020	0.00%
Aug	-	4,249	0.00%
Sep	-	4,751	0.00%
Oct	-	4,850	0.00%
Nov	-	4,883	0.00%
Dec	-	4,890	0.00%
YTD Jan	8,456	8,080	4.66%
Total	8,456	56,737	

TOTAL DEPARTURE CARGO TONS		
FY14	FY13	Var %
2,666	2,756	-3.25%
2,344	2,740	-14.44%
-	3,499	0.00%
-	3,389	0.00%
-	3,047	0.00%
-	2,951	0.00%
-	2,951	0.00%
-	3,070	0.00%
-	3,009	0.00%
-	2,817	0.00%
-	3,213	0.00%
-	3,082	0.00%
5,010	5,495	-8.83%
5,010	36,523	

TOTAL CARGO COMBINED TONS		
FY14	FY13	Var %
6,819	6,831	-0.18%
6,648	6,744	-1.44%
-	8,669	0.00%
-	8,540	0.00%
-	7,992	0.00%
-	7,699	0.00%
-	7,971	0.00%
-	7,319	0.00%
-	7,760	0.00%
-	7,666	0.00%
-	8,096	0.00%
-	7,972	0.00%
13,466	13,575	-0.80%
13,466	93,260	