



Airport International Group
مجموعة المطار الدولي

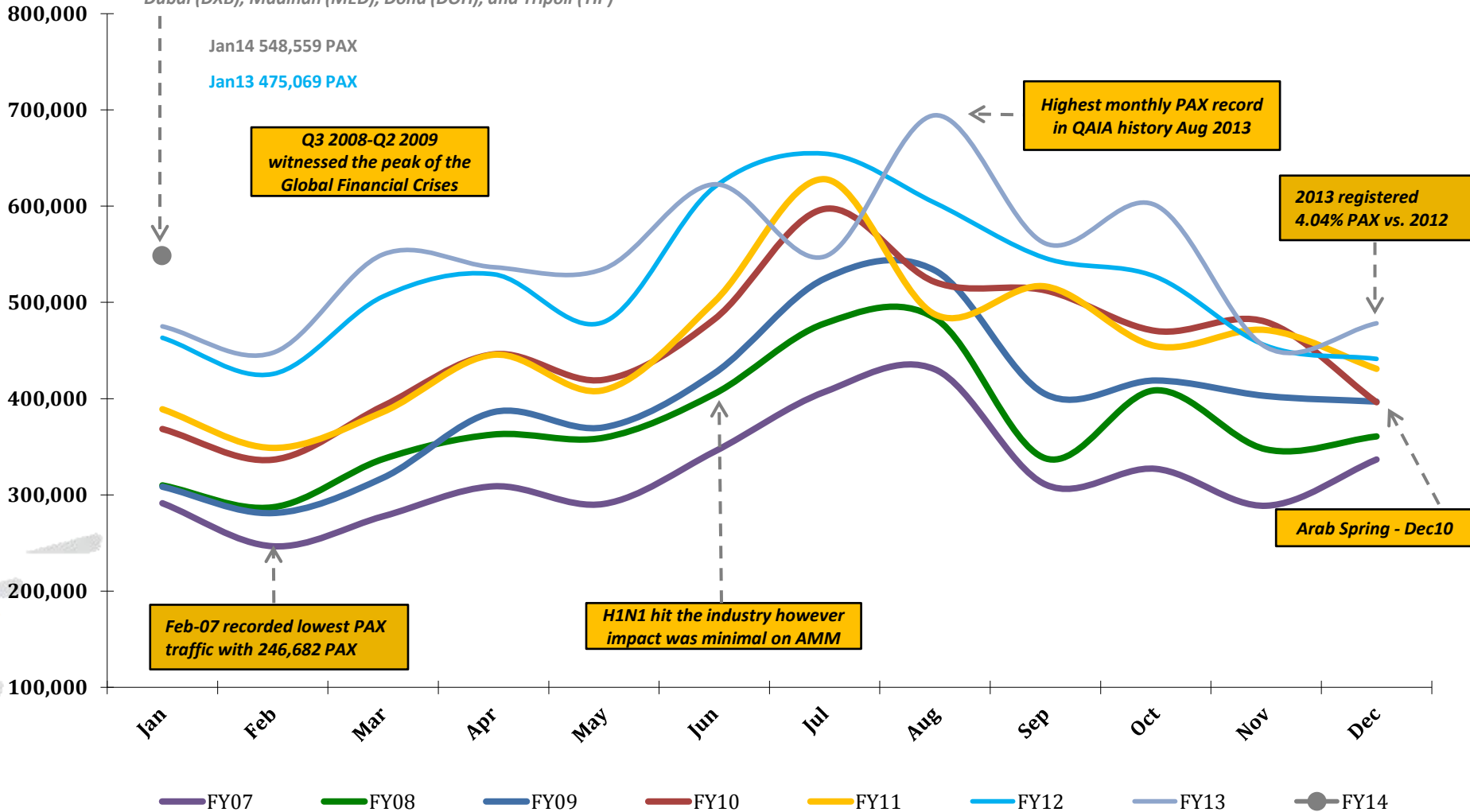
***QAIA MONTHLY
TRAFFIC STATISTICS
JANUARY 2014***



Total PAX per Month FY 2014 vs. Previous Years

+15.5% in PAX YTD Jan 2014 vs. YTD Jan 2013

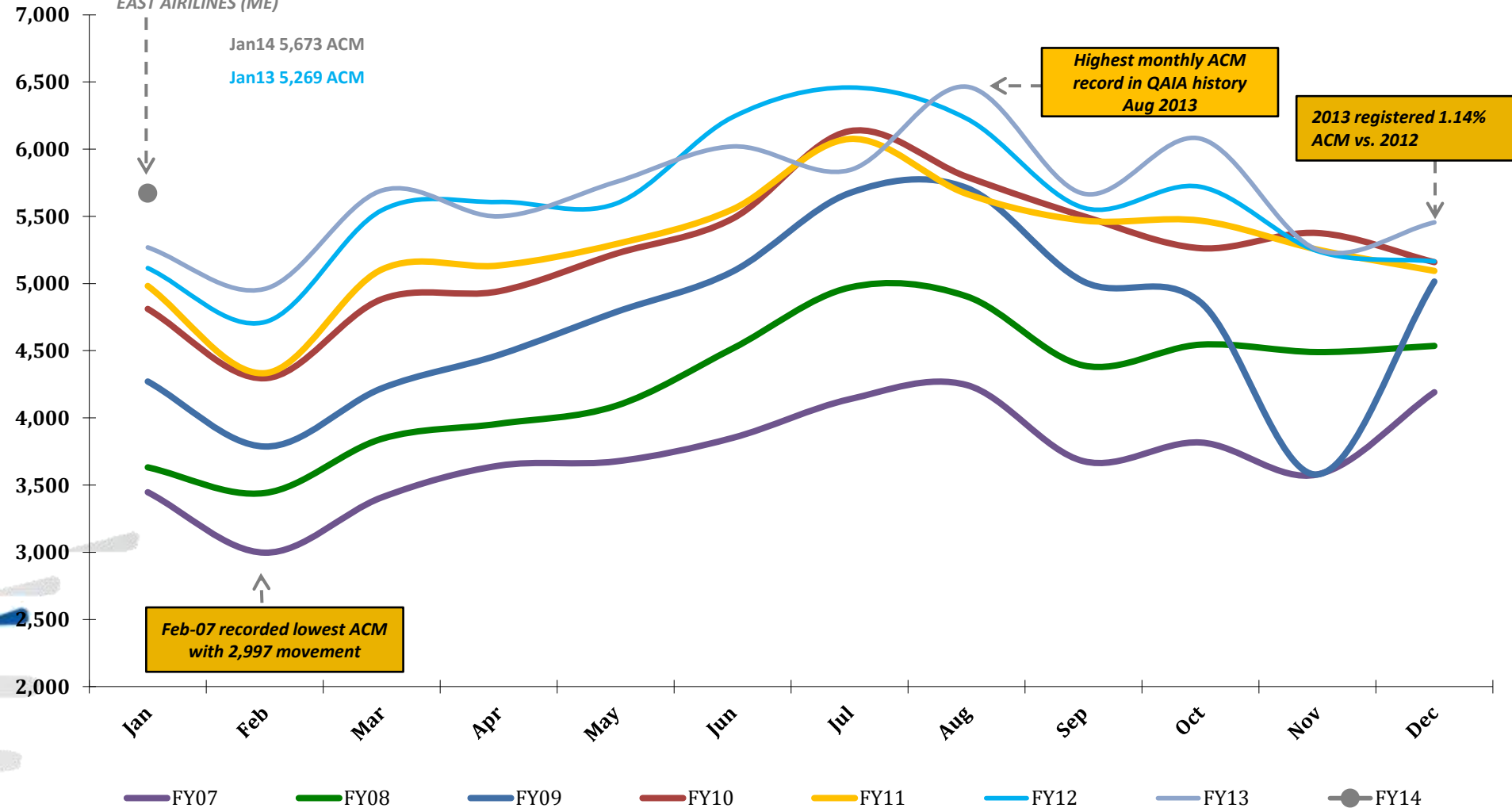
Top contributing Destinations to this month's growth were Jeddah (JED), Dubai (DXB), Madinah (MED), Doha (DOH), and Tripoli (TIP)



Total ACM per Month FY 2014 vs. Previous Years

+7.67% in ACM YTD Jan 2014 vs. YTD Jan 2013

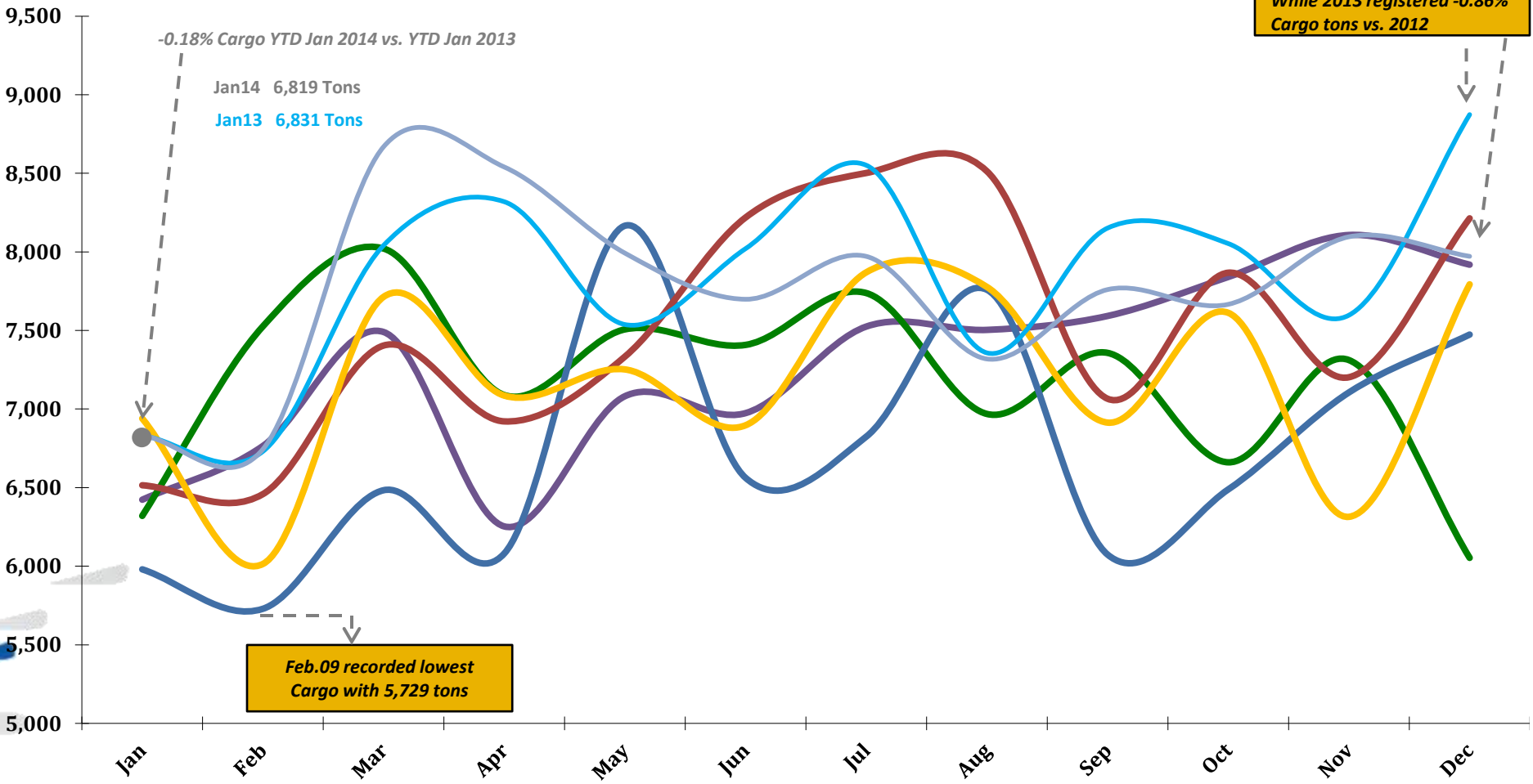
Top contributing Airlines to this month's growth were ROYAL JORDANIAN AIRLINES (RJ), NATIONAL AIR SERVICES (XY), QATAR AIRWAYS (QR), IRAQI AIRWAYS (IA) and MIDDLE EAST AIRLINES (ME)



Total CARGO per Month FY 2014 vs. Previous Years

Dec.12 recorded highest Cargo with ~8,874 tons

While 2013 registered -0.86% Cargo tons vs. 2012



FY07 FY08 FY09 FY10 FY11 FY12 FY13 FY14

Traffic Data - Public Stats

January 31, 2014

TOTAL ARRIVAL PAX			
Month	FY14	FY13	Var %
Jan	253,274	217,768	16.30%
Feb	-	234,762	0.00%
Mar	-	284,339	0.00%
Apr	-	268,841	0.00%
May	-	274,710	0.00%
Jun	-	332,790	0.00%
Jul	-	287,985	0.00%
Aug	-	336,626	0.00%
Sep	-	248,087	0.00%
Oct	-	300,525	0.00%
Nov	-	217,535	0.00%
Dec	-	237,729	0.00%
YTD Jan	253,274	217,768	16.30%
Total	253,274	3,241,697	

TOTAL DEPARTURE PAX		
FY14	FY13	Var %
295,285	257,301	14.76%
-	212,832	0.00%
-	265,522	0.00%
-	267,718	0.00%
-	260,188	0.00%
-	289,839	0.00%
-	259,636	0.00%
-	357,717	0.00%
-	313,118	0.00%
-	300,330	0.00%
-	235,909	0.00%
-	240,516	0.00%
295,285	257,301	14.76%
295,285	3,260,626	

TOTAL PAX COMBINED		
FY14	FY13	Var %
548,559	475,069	15.47%
-	447,594	0.00%
-	549,861	0.00%
-	536,559	0.00%
-	534,898	0.00%
-	622,629	0.00%
-	547,621	0.00%
-	694,343	0.00%
-	561,205	0.00%
-	600,855	0.00%
-	453,444	0.00%
-	478,245	0.00%
548,559	475,069	15.47%
548,559	6,502,323	

TOTAL ARRIVAL ACM			
Month	FY14	FY13	Var %
Jan	2,838	2,634	7.74%
Feb	-	2,477	0.00%
Mar	-	2,848	0.00%
Apr	-	2,747	0.00%
May	-	2,878	0.00%
Jun	-	3,014	0.00%
Jul	-	2,923	0.00%
Aug	-	3,231	0.00%
Sep	-	2,843	0.00%
Oct	-	3,033	0.00%
Nov	-	2,630	0.00%
Dec	-	2,725	0.00%
YTD Jan	2,838	2,634	7.74%
Total	2,838	33,983	

TOTAL DEPARTURE ACM		
FY14	FY13	Var %
2,835	2,635	7.59%
-	2,483	0.00%
-	2,844	0.00%
-	2,753	0.00%
-	2,877	0.00%
-	3,006	0.00%
-	2,921	0.00%
-	3,234	0.00%
-	2,826	0.00%
-	3,045	0.00%
-	2,622	0.00%
-	2,730	0.00%
2,835	2,635	7.59%
2,835	33,976	

TOTAL ACM COMBINED		
FY14	FY13	Var %
5,673	5,269	7.67%
-	4,960	0.00%
-	5,692	0.00%
-	5,500	0.00%
-	5,755	0.00%
-	6,020	0.00%
-	5,844	0.00%
-	6,465	0.00%
-	5,669	0.00%
-	6,078	0.00%
-	5,252	0.00%
-	5,455	0.00%
5,673	5,269	7.67%
5,673	67,959	

TOTAL ARRIVAL CARGO TONS			
Month	FY14	FY13	Var %
Jan	4,153	4,075	1.90%
Feb	-	4,005	0.00%
Mar	-	5,170	0.00%
Apr	-	5,151	0.00%
May	-	4,945	0.00%
Jun	-	4,748	0.00%
Jul	-	5,020	0.00%
Aug	-	4,249	0.00%
Sep	-	4,751	0.00%
Oct	-	4,850	0.00%
Nov	-	4,883	0.00%
Dec	-	4,890	0.00%
YTD Jan	4,153	4,075	1.90%
Total	4,153	56,737	

TOTAL DEPARTURE CARGO TONS		
FY14	FY13	Var %
2,666	2,756	-3.25%
-	2,740	0.00%
-	3,499	0.00%
-	3,389	0.00%
-	3,047	0.00%
-	2,951	0.00%
-	2,951	0.00%
-	3,070	0.00%
-	3,009	0.00%
-	2,817	0.00%
-	3,213	0.00%
-	3,082	0.00%
2,666	2,756	-3.25%
2,666	36,523	

TOTAL CARGO COMBINED TONS		
FY14	FY13	Var %
6,819	6,831	-0.18%
-	6,744	0.00%
-	8,669	0.00%
-	7,992	0.00%
-	7,699	0.00%
-	7,971	0.00%
-	7,319	0.00%
-	7,760	0.00%
-	7,666	0.00%
-	8,096	0.00%
-	7,972	0.00%
6,819	6,831	-0.18%
6,819	93,260	