



Airport International Group
مجموعة المطار الدولي

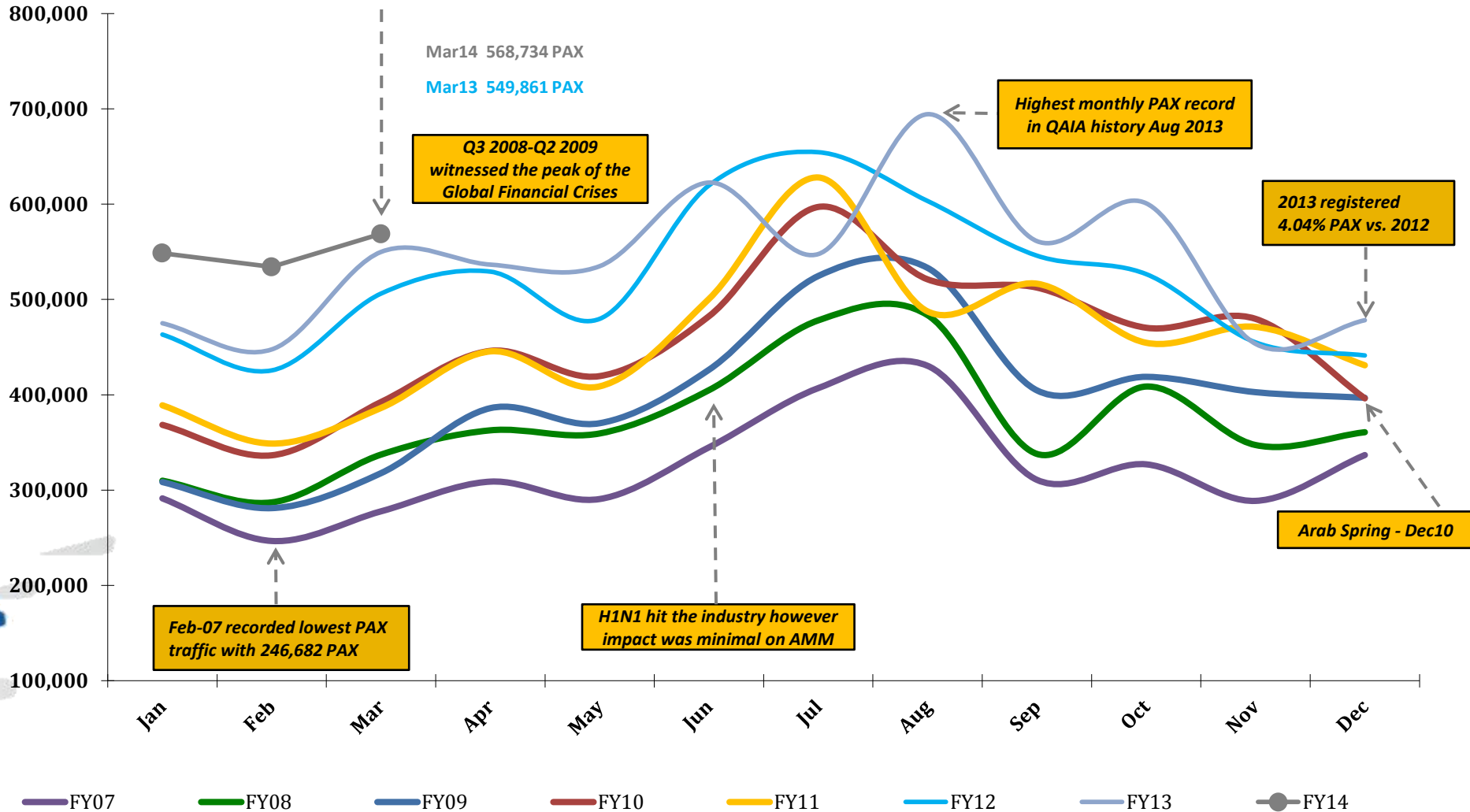
***QAIA MONTHLY
TRAFFIC STATISTICS
MARCH 2014***



Total PAX per Month FY 2014 vs. Previous Years

+12.15% in PAX YTD Mar 2014 vs. YTD Mar 2013

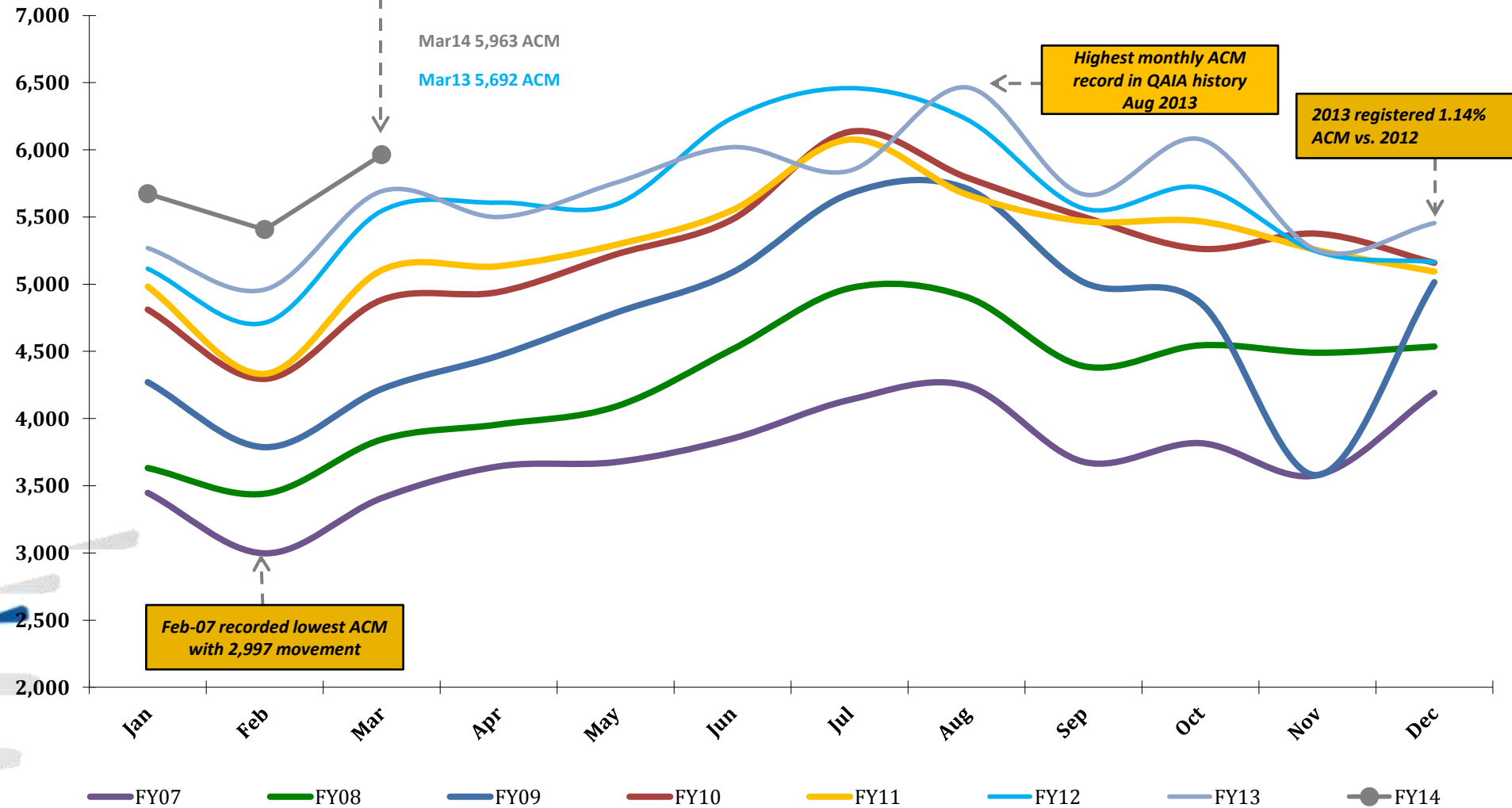
Top contributing Destinations to this month's growth were Doha (DOH), Riyadh (RUH), Baghdad (BGW), Tripoli (TIP) and Erbil (EBL)



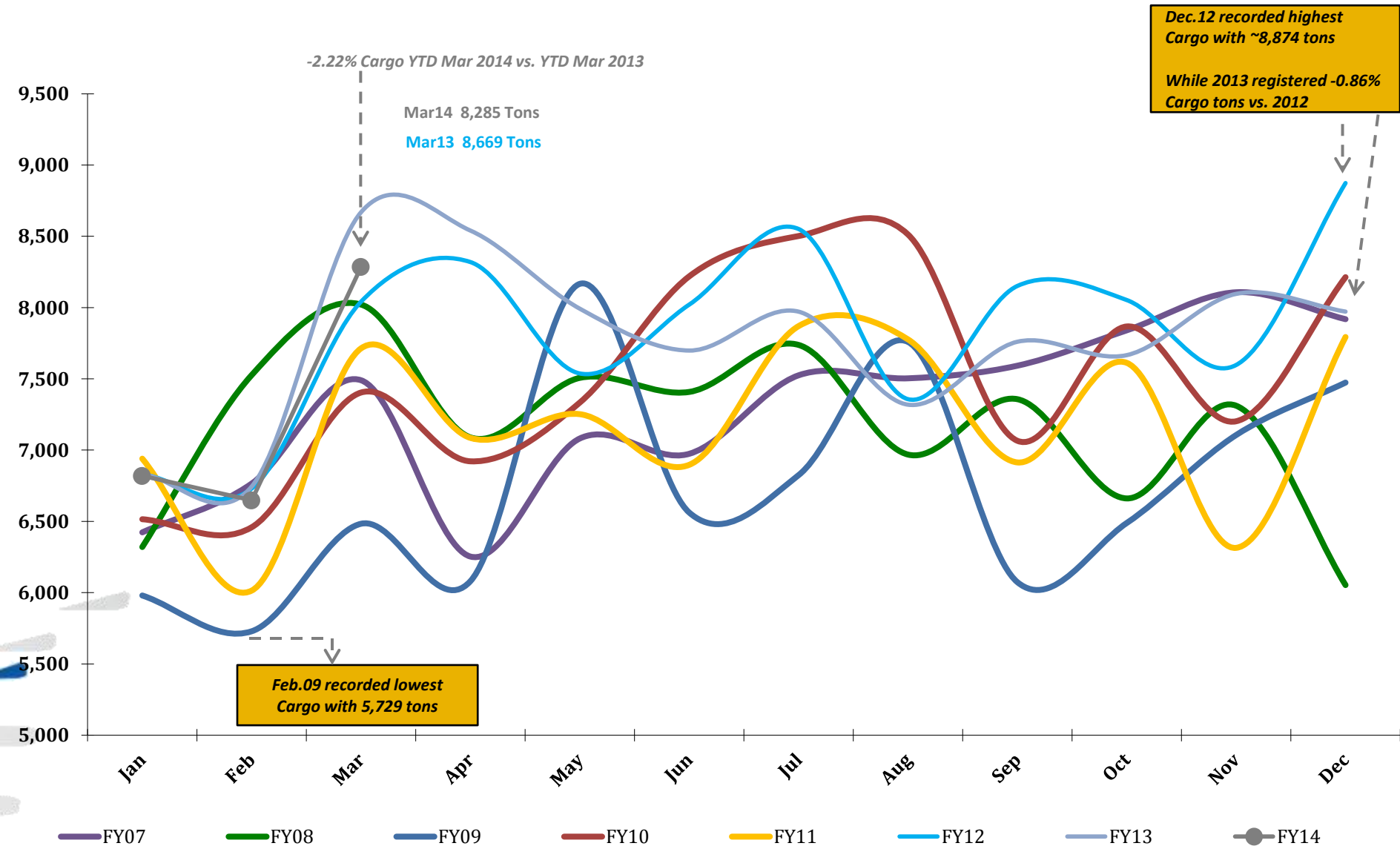
Total ACM per Month FY 2014 vs. Previous Years

+7.04% in ACM YTD Mar 2014 vs. YTD Mar 2013

Top contributing Airlines to this month's growth were QATAR AIRWAYS (QTR), IRAQI AIRWAYS (IAW), JORDAN AVIATION (JAV), Petra Airlines (PTR) and British Airways (BAW)



Total CARGO per Month FY 2014 vs. Previous Years



Traffic Data - Public Stats

March 31, 2014

TOTAL ARRIVAL PAX			
Month	FY14	FY13	Var %
Jan	253,274	217,768	16.30%
Feb	273,521	234,762	16.51%
Mar	286,599	284,339	0.79%
Apr	-	268,841	0.00%
May	-	274,710	0.00%
Jun	-	332,790	0.00%
Jul	-	287,985	0.00%
Aug	-	336,626	0.00%
Sep	-	248,087	0.00%
Oct	-	300,525	0.00%
Nov	-	217,535	0.00%
Dec	-	237,729	0.00%
YTD March	813,394	736,869	10.39%
Total	813,394	3,241,697	

TOTAL DEPARTURE PAX		
FY14	FY13	Var %
295,285	257,301	14.76%
260,601	212,832	22.44%
282,135	265,522	6.26%
-	267,718	0.00%
-	260,188	0.00%
-	289,839	0.00%
-	259,636	0.00%
-	357,717	0.00%
-	313,118	0.00%
-	300,330	0.00%
-	235,909	0.00%
-	240,516	0.00%
838,021	735,655	13.91%
838,021	3,260,626	

TOTAL PAX COMBINED		
FY14	FY13	Var %
548,559	475,069	15.47%
534,122	447,594	19.33%
568,734	549,861	3.43%
-	536,559	0.00%
-	534,898	0.00%
-	622,629	0.00%
-	547,621	0.00%
-	694,343	0.00%
-	561,205	0.00%
-	600,855	0.00%
-	453,444	0.00%
-	478,245	0.00%
1,651,415	1,472,524	12.15%
1,651,415	6,502,323	

TOTAL ARRIVAL ACM			
Month	FY14	FY13	Var %
Jan	2,838	2,634	7.74%
Feb	2,703	2,477	9.12%
Mar	2,989	2,848	4.95%
Apr	-	2,747	0.00%
May	-	2,878	0.00%
Jun	-	3,014	0.00%
Jul	-	2,923	0.00%
Aug	-	3,231	0.00%
Sep	-	2,843	0.00%
Oct	-	3,033	0.00%
Nov	-	2,630	0.00%
Dec	-	2,725	0.00%
YTD March	8,530	7,959	7.17%
Total	8,530	33,983	

TOTAL DEPARTURE ACM		
FY14	FY13	Var %
2,835	2,635	7.59%
2,703	2,483	8.86%
2,974	2,844	4.57%
-	2,753	0.00%
-	2,877	0.00%
-	3,006	0.00%
-	2,921	0.00%
-	3,234	0.00%
-	2,826	0.00%
-	3,045	0.00%
-	2,622	0.00%
-	2,730	0.00%
8,512	7,962	6.91%
8,512	33,976	

TOTAL ACM COMBINED		
FY14	FY13	Var %
5,673	5,269	7.67%
5,406	4,960	8.99%
5,963	5,692	4.76%
-	5,500	0.00%
-	5,755	0.00%
-	6,020	0.00%
-	5,844	0.00%
-	6,465	0.00%
-	5,669	0.00%
-	6,078	0.00%
-	5,252	0.00%
-	5,455	0.00%
17,042	15,921	7.04%
17,042	67,959	

TOTAL ARRIVAL CARGO TONS			
Month	FY14	FY13	Var %
Jan	4,153	4,075	1.90%
Feb	4,303	4,005	7.46%
Mar	5,508	5,170	6.55%
Apr	-	5,151	0.00%
May	-	4,945	0.00%
Jun	-	4,748	0.00%
Jul	-	5,020	0.00%
Aug	-	4,249	0.00%
Sep	-	4,751	0.00%
Oct	-	4,850	0.00%
Nov	-	4,883	0.00%
Dec	-	4,890	0.00%
YTD March	13,964	13,249	5.40%
Total	13,964	56,737	

TOTAL DEPARTURE CARGO TONS		
FY14	FY13	Var %
2,666	2,756	-3.25%
2,344	2,740	-14.44%
2,777	3,499	-20.65%
-	3,389	0.00%
-	3,047	0.00%
-	2,951	0.00%
-	2,951	0.00%
-	3,070	0.00%
-	3,009	0.00%
-	2,817	0.00%
-	3,213	0.00%
-	3,082	0.00%
7,787	8,995	-13.43%
7,787	36,523	

TOTAL CARGO COMBINED TONS		
FY14	FY13	Var %
6,819	6,831	-0.18%
6,648	6,744	-1.44%
8,285	8,669	-4.43%
-	8,540	0.00%
-	7,992	0.00%
-	7,699	0.00%
-	7,971	0.00%
-	7,319	0.00%
-	7,760	0.00%
-	7,666	0.00%
-	8,096	0.00%
-	7,972	0.00%
21,751	22,244	-2.22%
21,751	93,260	