

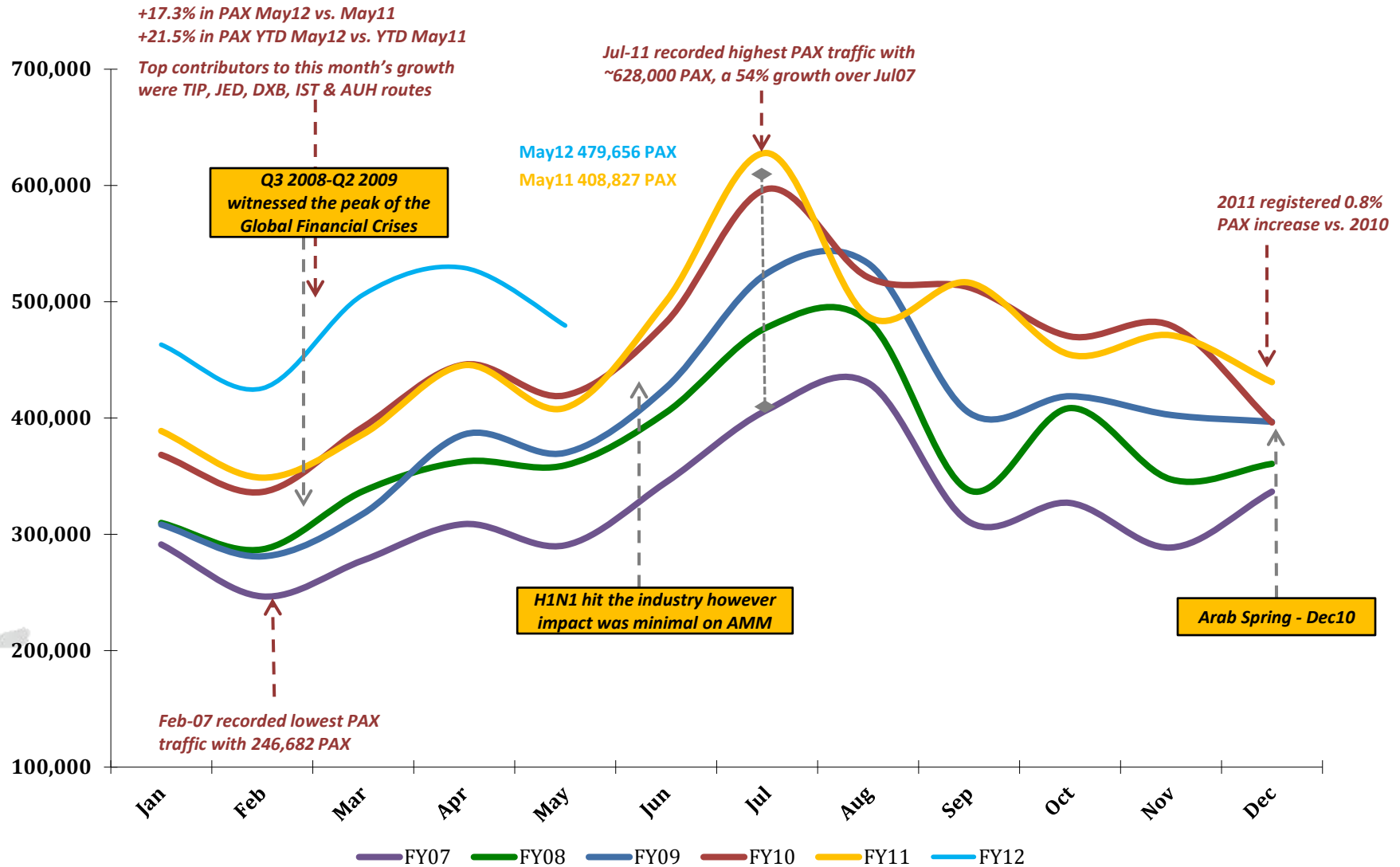


Airport International Group  
مجموعة المطار الدولي

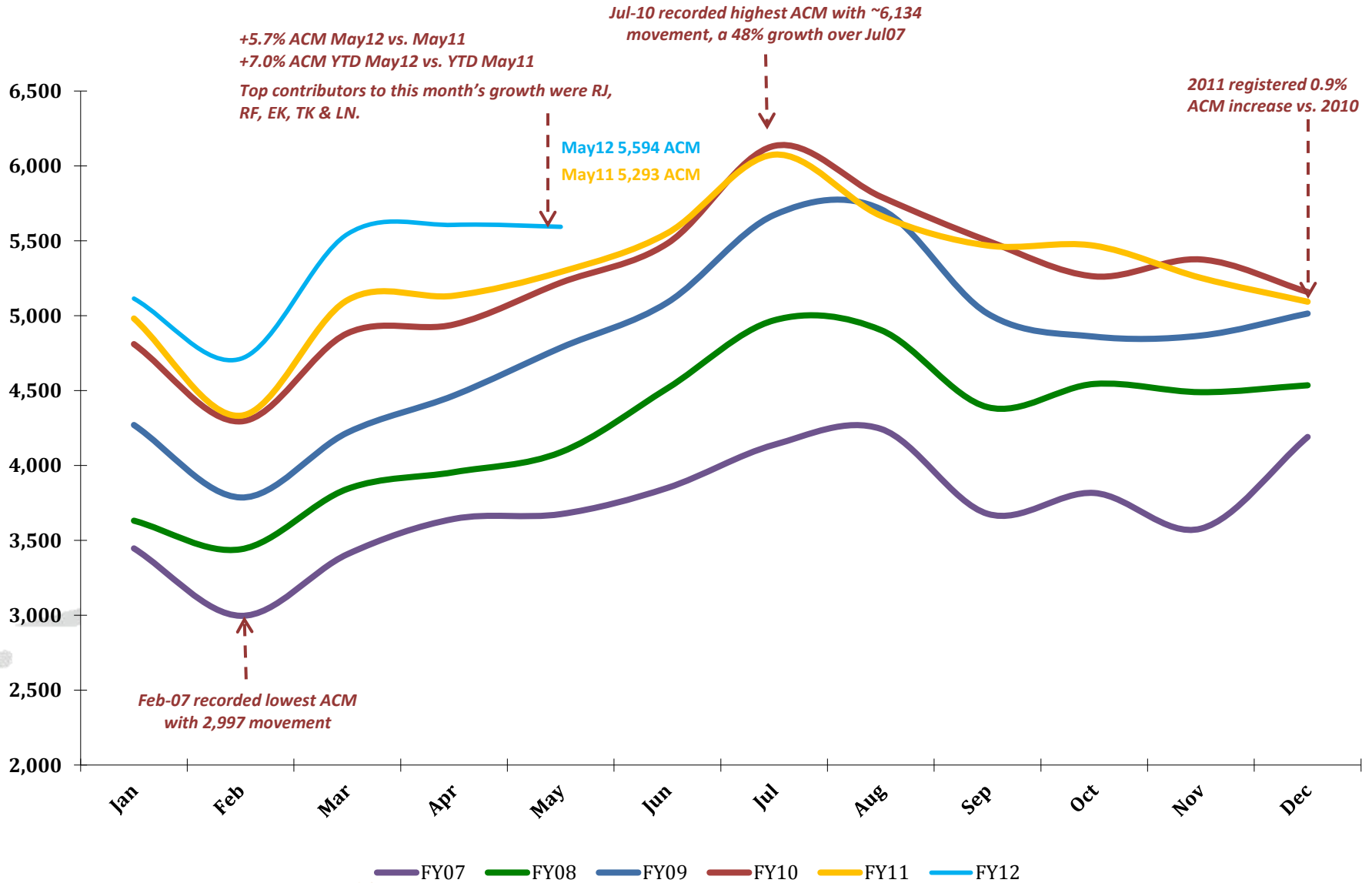
***QAIA MONTHLY  
TRAFFIC STATISTICS  
MAY 2012***



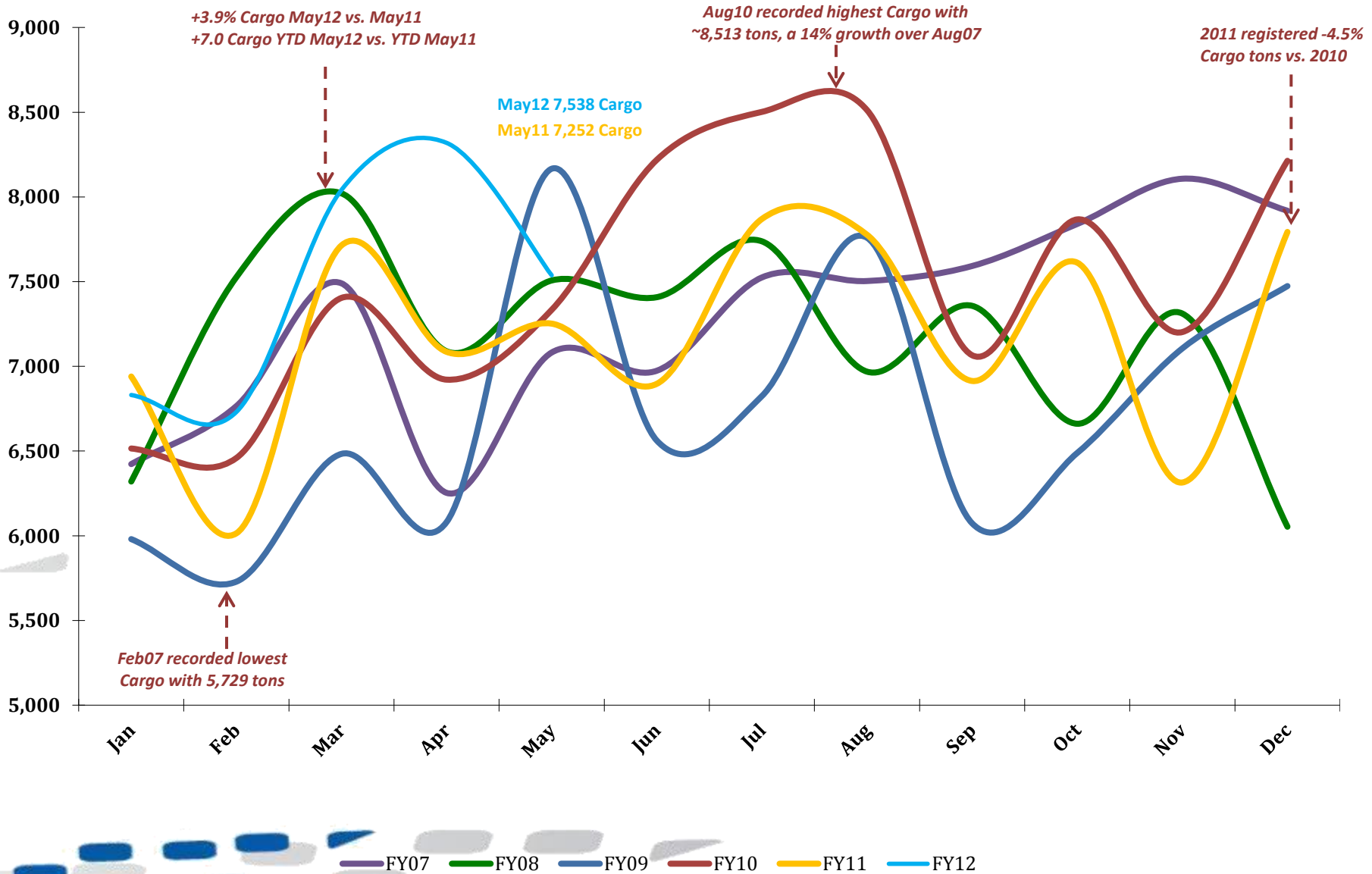
# Total PAX per Month FY 2012 vs. Previous Years



# Total ACM per Month FY 2012 vs. Previous Years



# Total CARGO per Month FY 2012 vs. Previous Years



# Traffic Data

TOTAL ARRIVAL PAX			
Month	FY12	FY11	Var %
Jan	218,154	177,386	22.98%
Feb	221,181	182,889	20.94%
Mar	259,065	197,952	30.87%
Apr	263,436	222,993	18.14%
May	242,336	208,811	16.06%
Jun		278,591	0.00%
Jul		322,221	0.00%
Aug		225,339	0.00%
Sep		230,895	0.00%
Oct		227,821	0.00%
Nov		230,905	0.00%
Dec		219,027	0.00%
YTD May	1,204,172	990,031	21.63%
<b>Total</b>	<b>1,204,172</b>	<b>2,724,830</b>	

TOTAL DEPARTURE PAX		
FY12	FY11	Var %
245,074	211,614	15.81%
204,410	165,943	23.18%
247,124	188,251	31.27%
265,784	222,533	19.44%
237,320	200,016	18.65%
	221,971	0.00%
	305,748	0.00%
	262,141	0.00%
	285,658	0.00%
	226,741	0.00%
	240,357	0.00%
	211,923	0.00%
1,199,712	988,357	21.38%
<b>1,199,712</b>	<b>2,742,896</b>	

TOTAL PAX COMBINED		
FY12	FY11	Var %
463,228	389,000	19.08%
425,591	348,832	22.00%
506,189	386,203	31.07%
529,220	445,526	18.79%
479,656	408,827	17.32%
	500,562	0.00%
	627,969	0.00%
	487,480	0.00%
	516,553	0.00%
	454,562	0.00%
	471,262	0.00%
	430,950	0.00%
2,403,884	1,978,388	21.51%
<b>2,403,884</b>	<b>5,467,726</b>	

TOTAL ARRIVAL ACM			
Month	FY12	FY11	Var %
Jan	2,555	2,487	2.73%
Feb	2,363	2,167	9.04%
Mar	2,769	2,556	8.33%
Apr	2,807	2,564	9.48%
May	2,792	2,645	5.56%
Jun		2,777	0.00%
Jul		3,038	0.00%
Aug		2,833	0.00%
Sep		2,735	0.00%
Oct		2,737	0.00%
Nov		2,628	0.00%
Dec		2,547	0.00%
YTD May	13,286	12,419	6.98%
<b>Total</b>	<b>13,286</b>	<b>31,714</b>	

TOTAL DEPARTURE ACM		
FY12	FY11	Var %
2,560	2,495	2.61%
2,350	2,166	8.49%
2,776	2,548	8.95%
2,800	2,570	8.95%
2,802	2,648	5.82%
	2,775	0.00%
	3,038	0.00%
	2,835	0.00%
	2,734	0.00%
	2,731	0.00%
	2,625	0.00%
	2,547	0.00%
13,288	12,427	6.93%
<b>13,288</b>	<b>31,712</b>	

TOTAL ACM COMBINED		
FY12	FY11	Var %
5,115	4,982	2.67%
4,713	4,333	8.77%
5,545	5,104	8.64%
5,607	5,134	9.21%
5,594	5,293	5.69%
	5,552	0.00%
	6,076	0.00%
	5,668	0.00%
	5,469	0.00%
	5,468	0.00%
	5,253	0.00%
	5,094	0.00%
26,574	24,846	6.95%
<b>26,574</b>	<b>63,426</b>	

TOTAL ARRIVAL CARGO TONS			
Month	FY12	FY11	Var %
Jan	3,960	4,089	-3.16%
Feb	4,046	3,665	10.39%
Mar	4,716	4,398	7.22%
Apr	5,061	4,248	19.15%
May	4,284	4,352	-1.58%
Jun		4,024	0.00%
Jul		4,713	0.00%
Aug		4,671	0.00%
Sep		3,989	0.00%
Oct		4,545	0.00%
Nov		3,830	0.00%
Dec		4,759	0.00%
YTD May	22,068	20,754	6.33%
<b>Total</b>	<b>22,068</b>	<b>51,285</b>	

TOTAL DEPARTURE CARGO TONS		
FY12	FY11	Var %
2,871	2,851	0.71%
2,684	2,349	14.28%
3,325	3,315	0.30%
3,258	2,838	14.81%
3,254	2,900	12.21%
	2,872	0.00%
	3,157	0.00%
	3,106	0.00%
	2,925	0.00%
	3,068	0.00%
	2,484	0.00%
	3,034	0.00%
15,392	14,252	8.00%
<b>15,392</b>	<b>34,898</b>	

TOTAL CARGO COMBINED TONS		
FY12	FY11	Var %
6,831	6,940	-1.57%
6,731	6,014	11.91%
8,041	7,714	4.25%
8,319	7,086	17.41%
7,538	7,252	3.94%
	6,897	0.00%
	7,870	0.00%
	7,777	0.00%
	6,914	0.00%
	7,612	0.00%
	6,314	0.00%
	7,794	0.00%
37,460	35,006	7.01%
<b>37,460</b>	<b>86,184</b>	