



Airport International Group  
مجموعة المطار الدولي

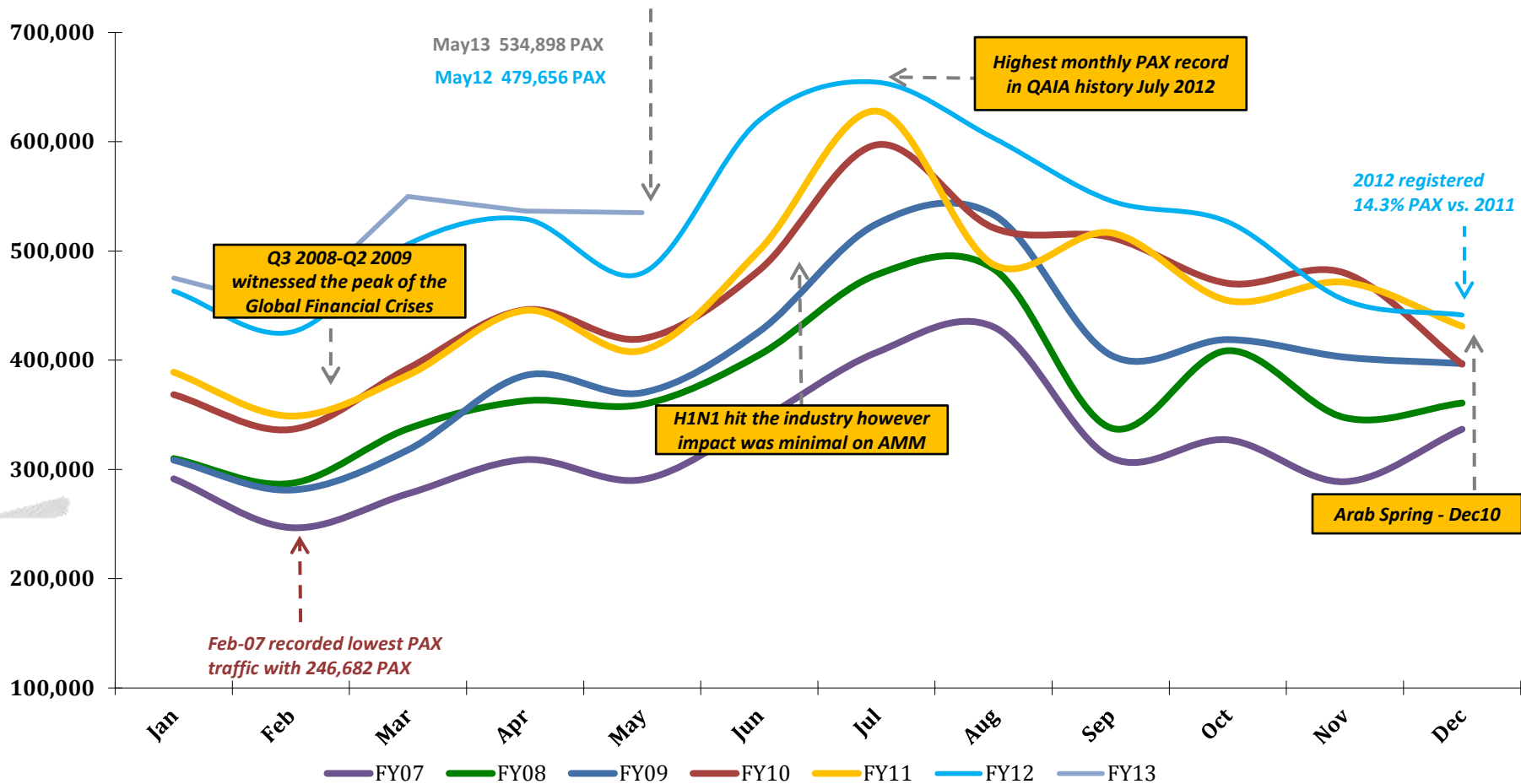
***QAIA MONTHLY  
TRAFFIC STATISTICS  
MAY 2013***



# Total PAX per Month FY 2013 vs. Previous Years

+5.83% in PAX YTD May 2013 vs. YTD May 2012

Top contributing Destinations to this month's growth were Jeddah (JED), Dubai (DXB), Cairo (CAI), Beirut (BEY) and Riyadh (RUH)



# Total ACM per Month FY 2013 vs. Previous Years

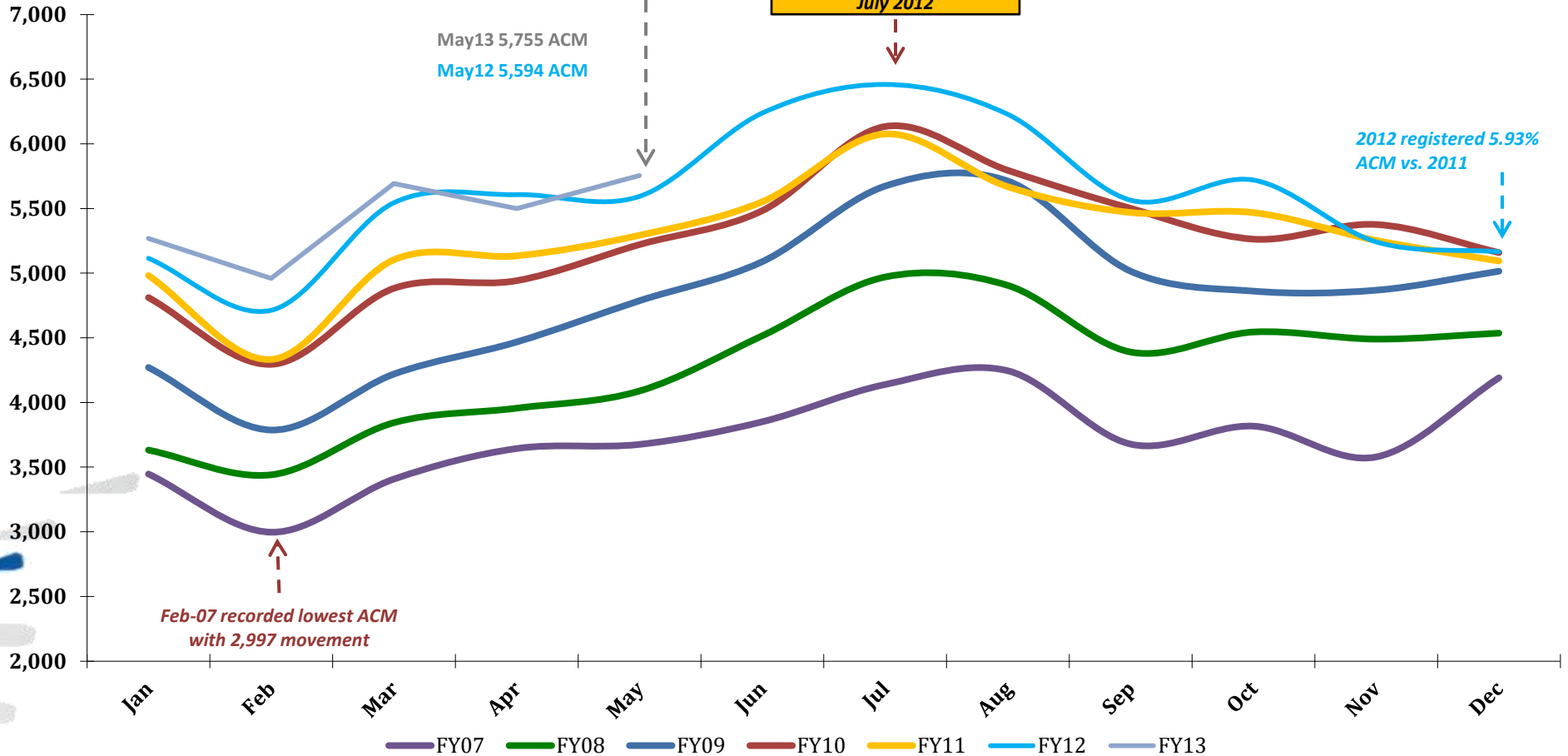
+2.27% in ACM YTD May 2013 vs. YTD May 2012

Top contributing Airlines to this month's growth were Royal Jordanian (RJ), Iraqi Airways (IA), Jordan Aviation (R5), Royal Falcon (RL) and Middle East Airlines (ME)

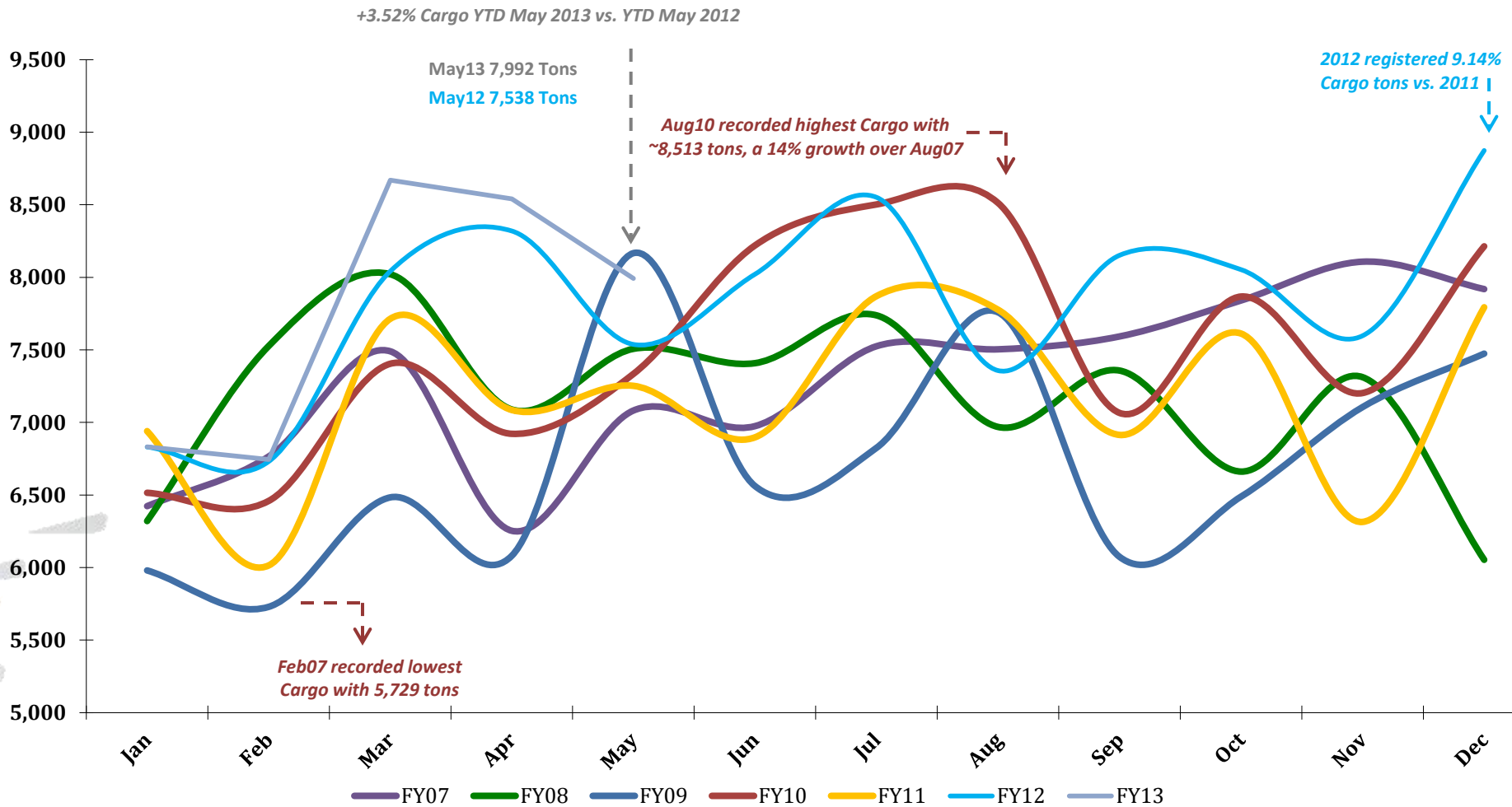
Highest monthly ACM record in QAIA history July 2012

2012 registered 5.93% ACM vs. 2011

Feb-07 recorded lowest ACM with 2,997 movement



# Total CARGO per Month FY 2013 vs. Previous Years



# Traffic Data - Public Stats

## May 31, 2013

TOTAL ARRIVAL PAX			
Month	FY13	FY12	Var %
Jan	217,768	218,154	-0.18%
Feb	234,762	221,181	6.14%
Mar	284,339	259,065	9.76%
Apr	268,841	263,436	2.05%
May	274,710	242,336	13.36%
Jun	0	336,813	0.00%
Jul	0	313,059	0.00%
Aug	0	289,430	0.00%
Sep	0	244,151	0.00%
Oct	0	266,026	0.00%
Nov	0	217,971	0.00%
Dec	0	222,066	0.00%
YTD May	1,280,420	1,204,172	6.33%
<b>Total</b>	<b>1,280,420</b>	<b>3,093,688</b>	

TOTAL DEPARTURE PAX		
FY13	FY12	Var %
257,301	245,074	4.99%
212,832	204,410	4.12%
265,522	247,124	7.44%
267,718	265,784	0.73%
260,188	237,320	9.64%
0	282,802	0.00%
0	341,407	0.00%
0	313,856	0.00%
0	301,790	0.00%
0	260,558	0.00%
0	237,013	0.00%
0	219,222	0.00%
1,263,561	1,199,712	5.32%
<b>1,263,561</b>	<b>3,156,360</b>	

TOTAL PAX COMBINED		
FY13	FY12	Var %
475,069	463,228	2.56%
447,594	425,591	5.17%
549,861	506,189	8.63%
536,559	529,220	1.39%
534,898	479,656	11.52%
0	619,615	0.00%
0	654,466	0.00%
0	603,286	0.00%
0	545,941	0.00%
0	526,584	0.00%
0	454,984	0.00%
0	441,288	0.00%
2,543,981	2,403,884	5.83%
<b>2,543,981</b>	<b>6,250,048</b>	

TOTAL ARRIVAL ACM			
Month	FY13	FY12	Var %
Jan	2,634	2,555	3.09%
Feb	2,477	2,363	4.82%
Mar	2,848	2,769	2.85%
Apr	2,747	2,807	-2.14%
May	2,878	2,792	3.08%
Jun	0	3,120	0.00%
Jul	0	3,230	0.00%
Aug	0	3,114	0.00%
Sep	0	2,786	0.00%
Oct	0	2,860	0.00%
Nov	0	2,621	0.00%
Dec	0	2,585	0.00%
YTD May	13,584	13,286	2.24%
<b>Total</b>	<b>13,584</b>	<b>33,602</b>	

TOTAL DEPARTURE ACM		
FY13	FY12	Var %
2,635	2,560	2.93%
2,483	2,350	5.66%
2,844	2,776	2.45%
2,753	2,800	-1.68%
2,877	2,802	2.68%
0	3,118	0.00%
0	3,229	0.00%
0	3,114	0.00%
0	2,778	0.00%
0	2,860	0.00%
0	2,621	0.00%
0	2,580	0.00%
13,592	13,288	2.29%
<b>13,592</b>	<b>33,588</b>	

TOTAL ACM COMBINED		
FY13	FY12	Var %
5,269	5,115	3.01%
4,960	4,713	5.24%
5,692	5,545	2.65%
5,500	5,607	-1.91%
5,755	5,594	2.88%
0	6,238	0.00%
0	6,459	0.00%
0	6,228	0.00%
0	5,564	0.00%
0	5,720	0.00%
0	5,242	0.00%
0	5,165	0.00%
27,176	26,574	2.27%
<b>27,176</b>	<b>67,190</b>	

TOTAL ARRIVAL CARGO TONS			
Month	FY13	FY12	Var %
Jan	4,075	3,960	2.91%
Feb	4,005	4,046	-1.03%
Mar	5,170	4,716	9.62%
Apr	5,151	5,061	1.78%
May	4,945	4,284	15.44%
Jun	0	4,945	0.00%
Jul	0	5,148	0.00%
Aug	0	4,748	0.00%
Sep	0	5,034	0.00%
Oct	0	5,196	0.00%
Nov	0	4,549	0.00%
Dec	0	5,415	0.00%
YTD May	23,346	22,068	5.79%
<b>Total</b>	<b>23,346</b>	<b>57,101</b>	

TOTAL DEPARTURE CARGO TONS		
FY13	FY12	Var %
2,756	2,871	-4.02%
2,740	2,684	2.07%
3,499	3,325	5.23%
3,389	3,258	4.02%
3,047	3,254	-6.36%
0	3,076	0.00%
0	3,404	0.00%
0	2,609	0.00%
0	3,118	0.00%
0	2,857	0.00%
0	3,048	0.00%
0	3,459	0.00%
15,430	15,392	0.25%
<b>15,430</b>	<b>36,963</b>	

TOTAL CARGO COMBINED TONS		
FY13	FY12	Var %
6,831	6,831	0.00%
6,744	6,731	0.20%
8,669	8,041	7.80%
8,540	8,319	2.66%
7,992	7,538	6.03%
0	8,021	0.00%
0	8,551	0.00%
0	7,357	0.00%
0	8,152	0.00%
0	8,053	0.00%
0	7,597	0.00%
0	8,874	0.00%
38,776	37,460	3.52%
<b>38,776</b>	<b>94,064</b>	