



Airport International Group
مجموعة المطار الدولي

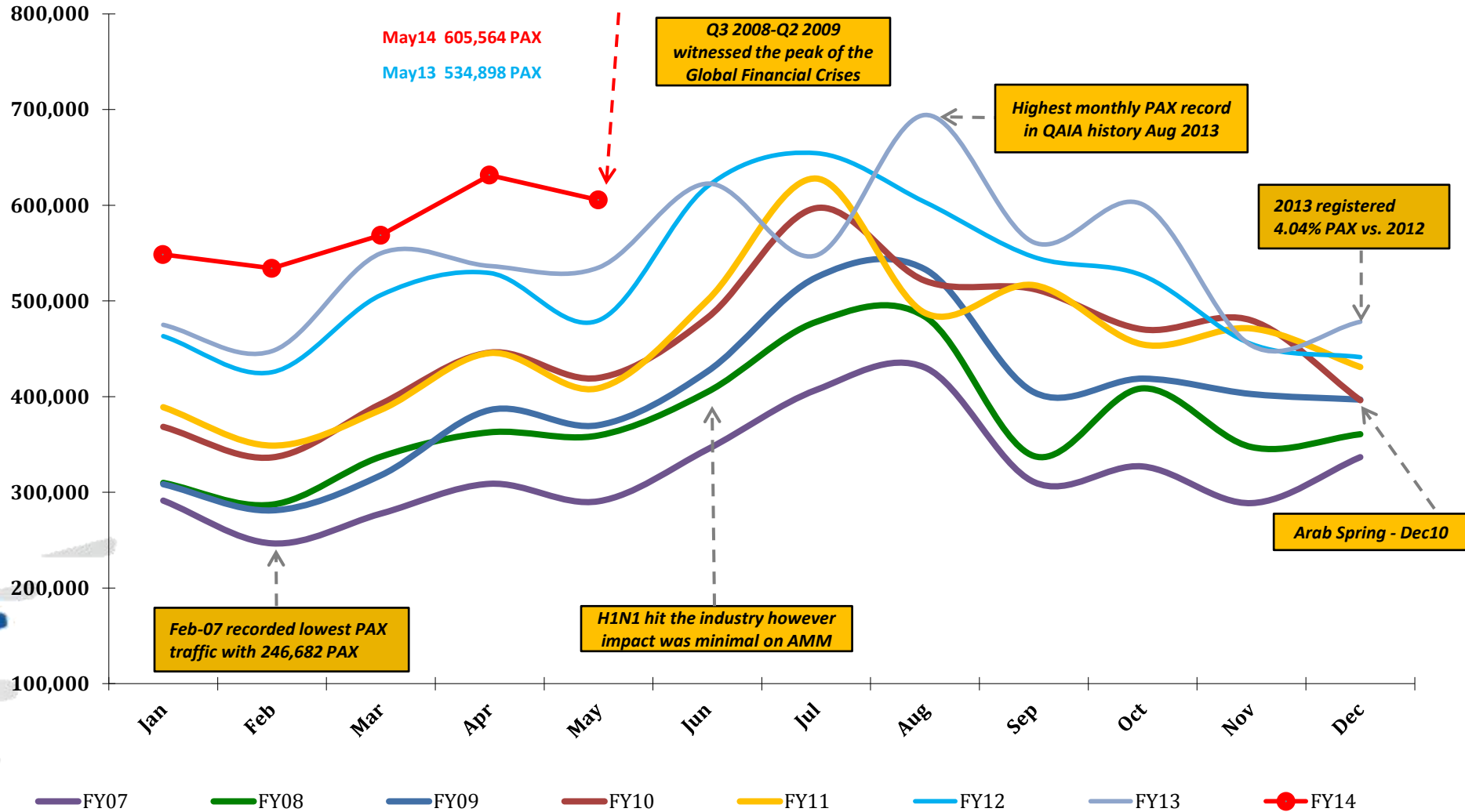
QAIA MONTHLY TRAFFIC STATISTICS MAY 2014



Total PAX per Month FY 2014 vs. Previous Years

+13.54% in PAX YTD May 2014 vs. YTD May 2013

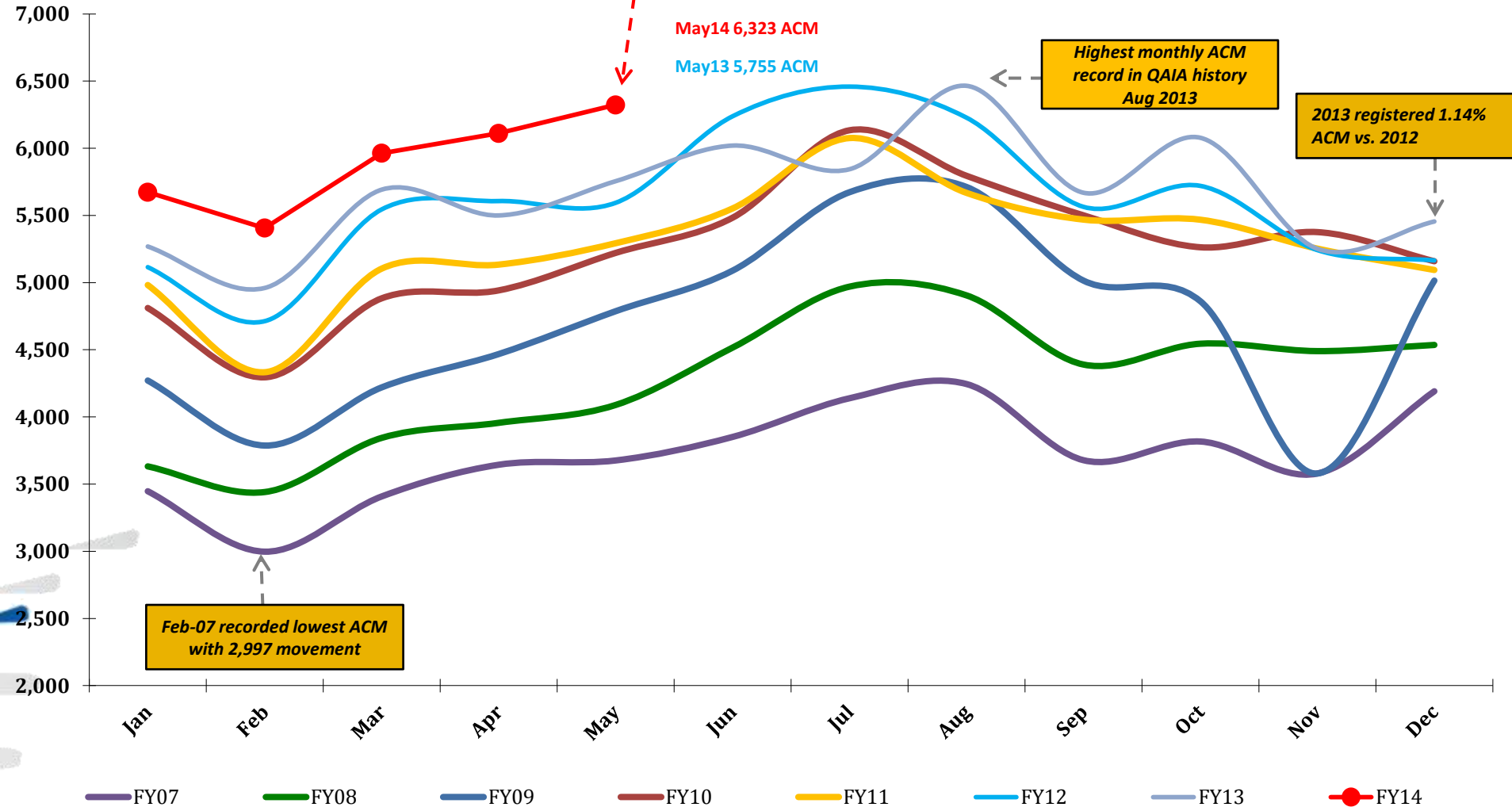
Top 5 contributing Destinations to this month's growth were Doha (DOH), Abu Dhabi (AUH), Sharm El Sheikh (SSH), Kwait (KWI), and London (LHR).



Total ACM per Month FY 2014 vs. Previous Years

+8.46% in ACM YTD May 2014 vs. YTD May 2013

Top contributing Airlines to this month's growth were ROYAL JORDANIAN (RJA), QATAR AIRWAYS (QTR), ROYAL WINGS (RWA), JORDAN AVIATION (JAV), ETIHAD AIRWAYS (ETD)



Total CARGO per Month FY 2014 vs. Previous Years

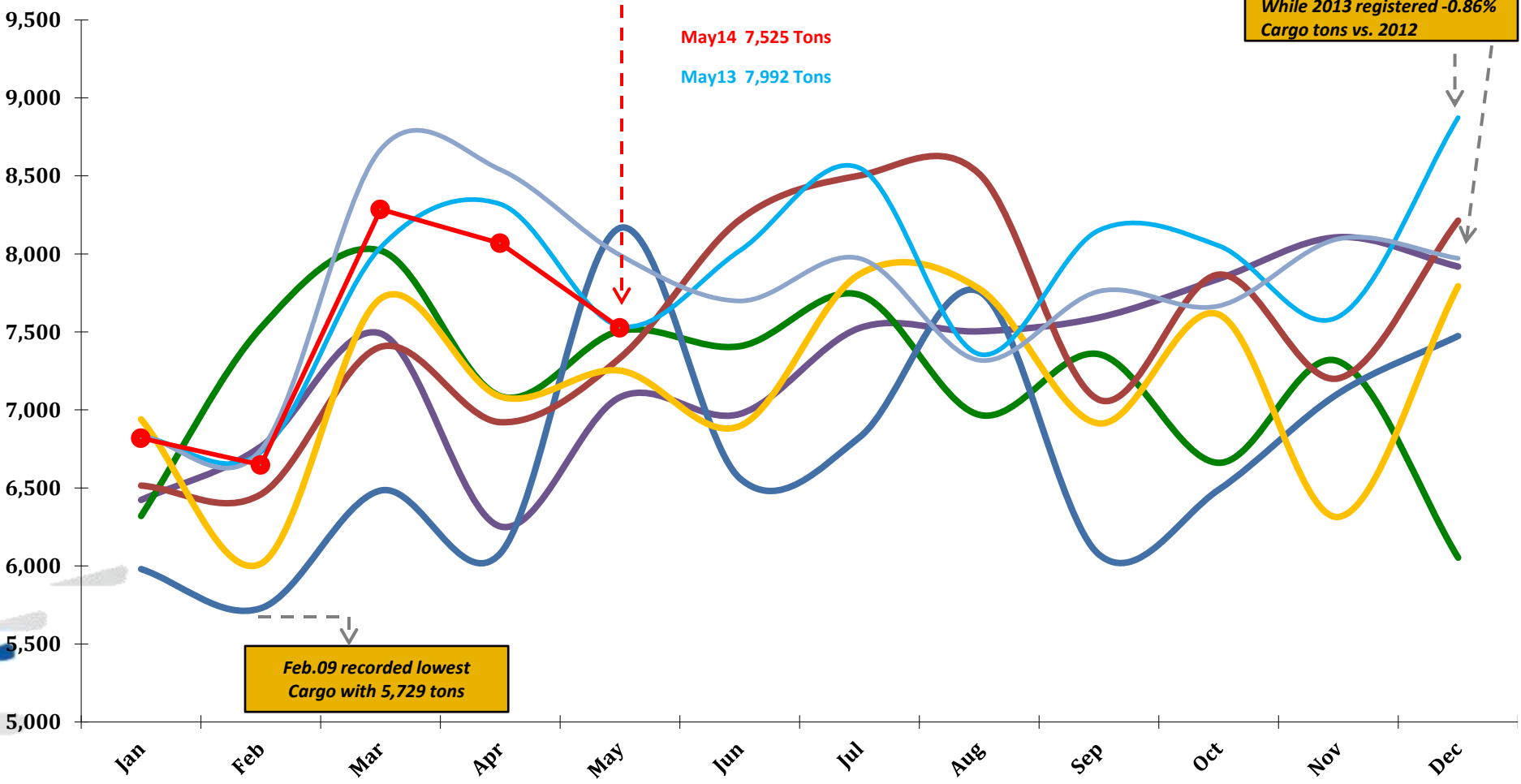
Dec.12 recorded highest Cargo with ~8,874 tons

While 2013 registered -0.86% Cargo tons vs. 2012

-3.69% Cargo YTD May 2014 vs. YTD May 2013

May14 7,525 Tons
May13 7,992 Tons

Feb.09 recorded lowest Cargo with 5,729 tons



FY07 FY08 FY09 FY10 FY11 FY12 FY13 FY14

Traffic Data - Public Stats

May 31, 2014

TOTAL ARRIVAL PAX			
Month	FY14	FY13	Var %
Jan	253,274	217,768	16.30%
Feb	273,521	234,762	16.51%
Mar	286,599	284,339	0.79%
Apr	312,366	268,841	16.19%
May	305,859	274,710	11.34%
Jun	-	332,790	0.00%
Jul	-	287,985	0.00%
Aug	-	336,626	0.00%
Sep	-	248,087	0.00%
Oct	-	300,525	0.00%
Nov	-	217,535	0.00%
Dec	-	237,729	0.00%
YTD May	1,431,619	1,280,420	11.81%
Total	1,431,619	3,241,697	

TOTAL DEPARTURE PAX		
FY14	FY13	Var %
295,285	257,301	14.76%
260,601	212,832	22.44%
282,135	265,522	6.26%
319,113	267,718	19.20%
299,705	260,188	15.19%
-	289,839	0.00%
-	259,636	0.00%
-	357,717	0.00%
-	313,118	0.00%
-	300,330	0.00%
-	235,909	0.00%
-	240,516	0.00%
1,456,839	1,263,561	15.30%
1,456,839	3,260,626	

TOTAL PAX COMBINED		
FY14	FY13	Var %
548,559	475,069	15.47%
534,122	447,594	19.33%
568,734	549,861	3.43%
631,479	536,559	17.69%
605,564	534,898	13.21%
-	622,629	0.00%
-	547,621	0.00%
-	694,343	0.00%
-	561,205	0.00%
-	600,855	0.00%
-	453,444	0.00%
-	478,245	0.00%
2,888,458	2,543,981	13.54%
2,888,458	6,502,323	

TOTAL ARRIVAL ACM			
Month	FY14	FY13	Var %
Jan	2,838	2,634	7.74%
Feb	2,703	2,477	9.12%
Mar	2,989	2,848	4.95%
Apr	3,055	2,747	11.21%
May	3,159	2,878	9.76%
Jun	-	3,014	0.00%
Jul	-	2,923	0.00%
Aug	-	3,231	0.00%
Sep	-	2,843	0.00%
Oct	-	3,033	0.00%
Nov	-	2,630	0.00%
Dec	-	2,725	0.00%
YTD May	14,744	13,584	8.54%
Total	14,744	33,983	

TOTAL DEPARTURE ACM		
FY14	FY13	Var %
2,835	2,635	7.59%
2,703	2,483	8.86%
2,974	2,844	4.57%
3,056	2,753	11.01%
3,164	2,877	9.98%
-	3,006	0.00%
-	2,921	0.00%
-	3,234	0.00%
-	2,826	0.00%
-	3,045	0.00%
-	2,622	0.00%
-	2,730	0.00%
14,732	13,592	8.39%
14,732	33,976	

TOTAL ACM COMBINED		
FY14	FY13	Var %
5,673	5,269	7.67%
5,406	4,960	8.99%
5,963	5,692	4.76%
6,111	5,500	11.11%
6,323	5,755	9.87%
-	6,020	0.00%
-	5,844	0.00%
-	6,465	0.00%
-	5,669	0.00%
-	6,078	0.00%
-	5,252	0.00%
-	5,455	0.00%
29,476	27,176	8.46%
29,476	67,959	

TOTAL ARRIVAL CARGO TONS			
Month	FY14	FY13	Var %
Jan	4,153	4,075	1.90%
Feb	4,303	4,005	7.46%
Mar	5,508	5,170	6.55%
Apr	5,009	5,151	-2.75%
May	4,555	4,945	-7.88%
Jun	-	4,748	0.00%
Jul	-	5,020	0.00%
Aug	-	4,249	0.00%
Sep	-	4,751	0.00%
Oct	-	4,850	0.00%
Nov	-	4,883	0.00%
Dec	-	4,890	0.00%
YTD May	23,529	23,346	0.78%
Total	23,529	56,737	

TOTAL DEPARTURE CARGO TONS		
FY14	FY13	Var %
2,666	2,756	-3.25%
2,344	2,740	-14.44%
2,777	3,499	-20.65%
3,058	3,389	-9.75%
2,970	3,047	-2.52%
-	2,951	0.00%
-	2,951	0.00%
-	3,070	0.00%
-	3,009	0.00%
-	2,817	0.00%
-	3,213	0.00%
-	3,082	0.00%
13,815	15,430	-10.47%
13,815	36,523	

TOTAL CARGO COMBINED TONS		
FY14	FY13	Var %
6,819	6,831	-0.18%
6,648	6,744	-1.44%
8,285	8,669	-4.43%
8,068	8,540	-5.53%
7,525	7,992	-5.84%
-	7,699	0.00%
-	7,971	0.00%
-	7,319	0.00%
-	7,760	0.00%
-	7,666	0.00%
-	8,096	0.00%
-	7,972	0.00%
37,345	38,776	-3.69%
37,345	93,260	