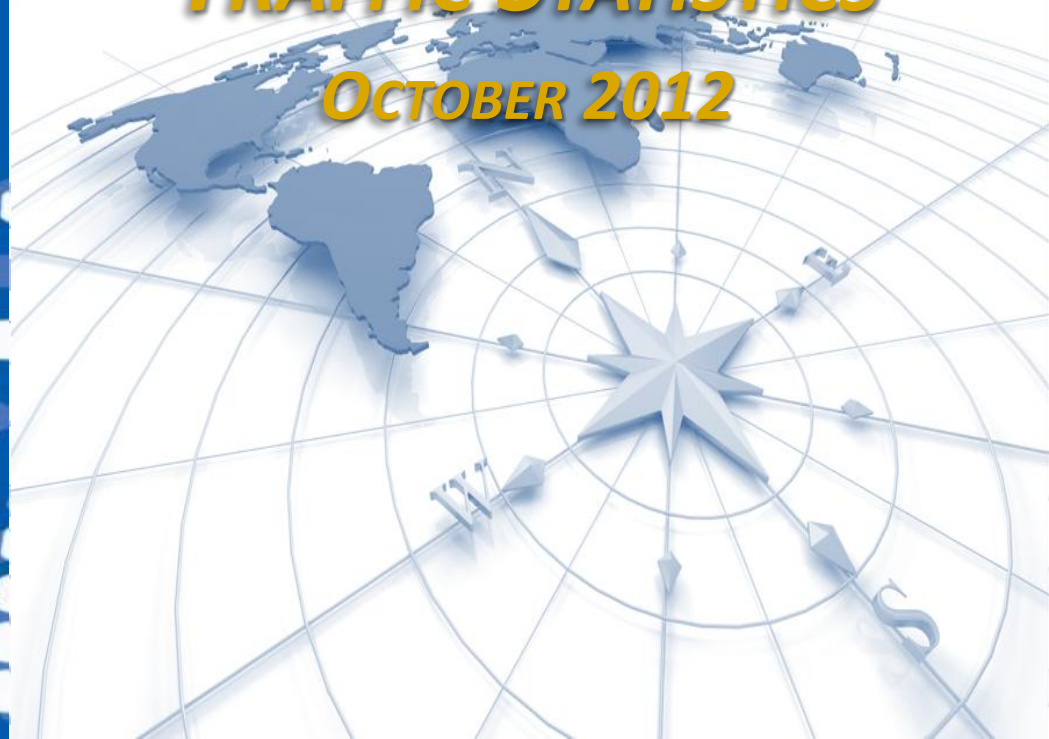


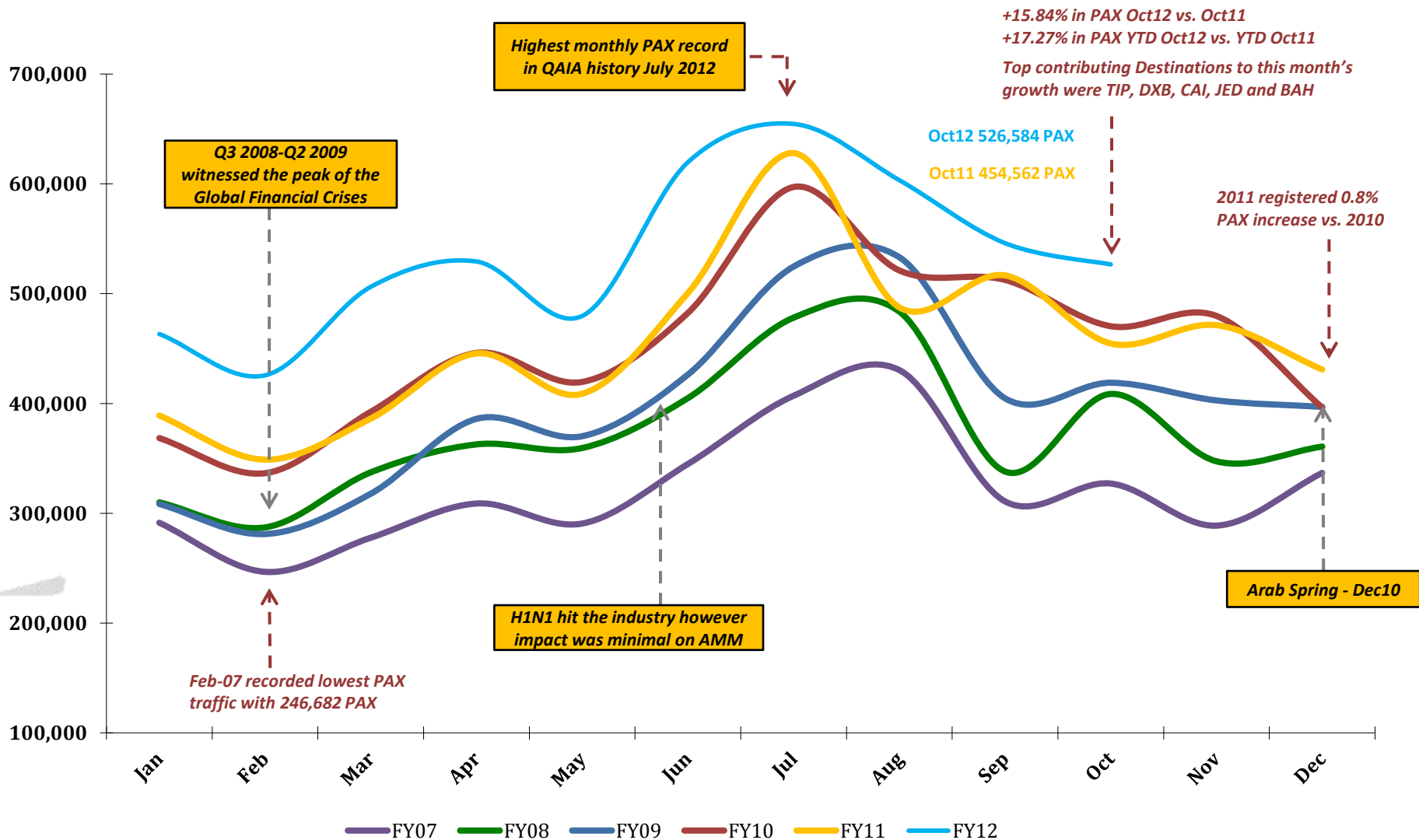


Airport International Group
مجموعة المطار الدولي

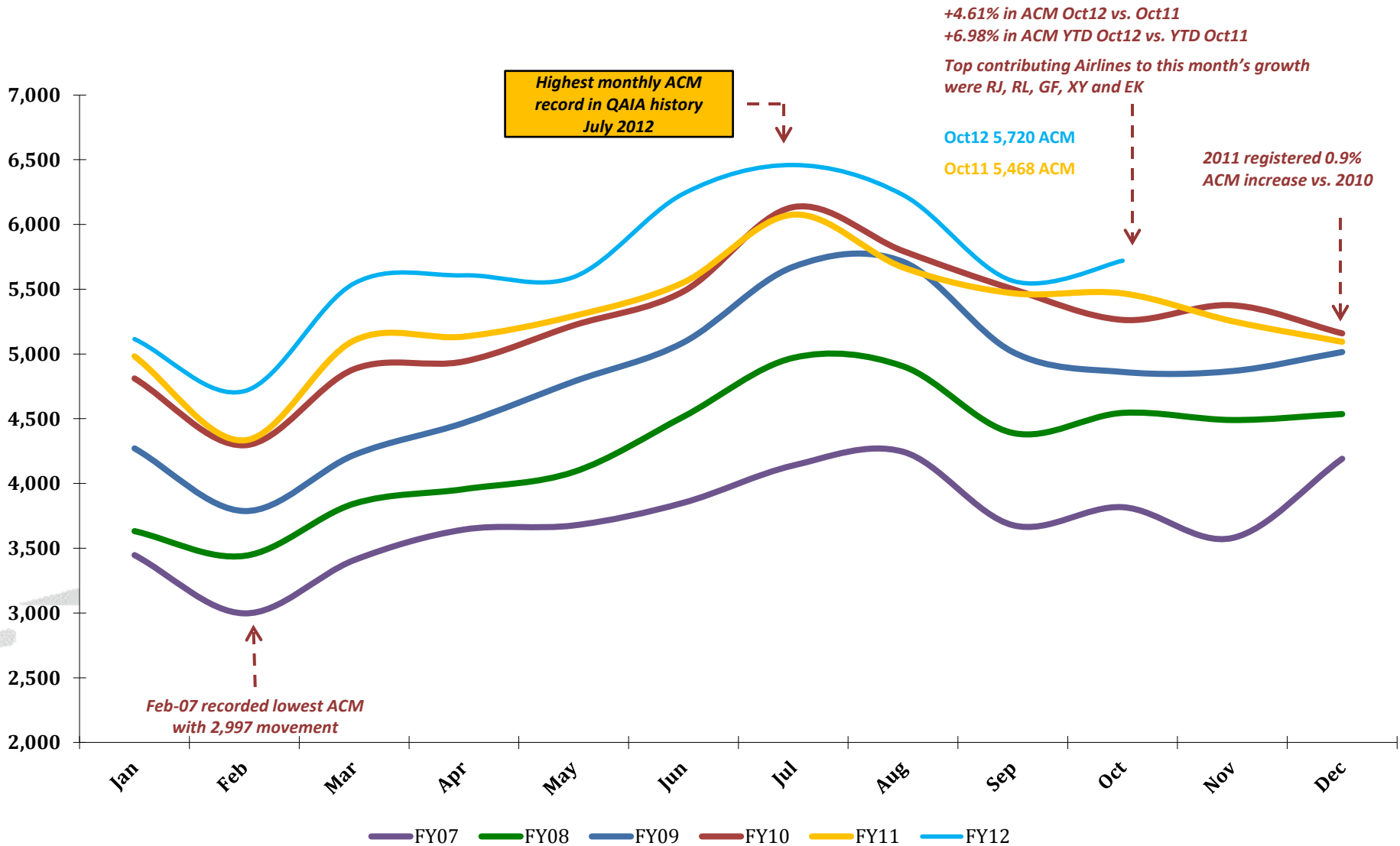
***QAIA MONTHLY
TRAFFIC STATISTICS
OCTOBER 2012***



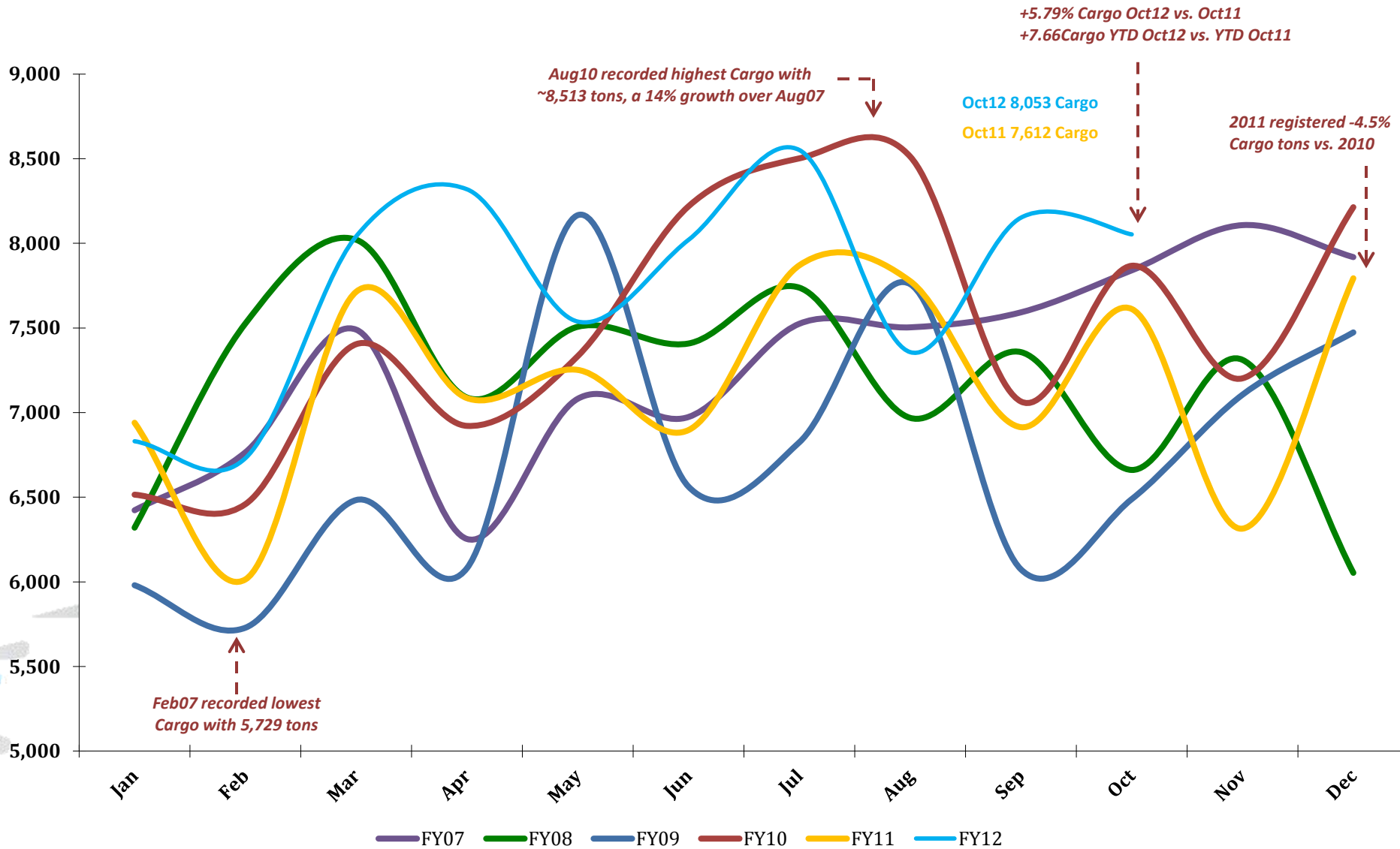
Total PAX per Month FY 2012 vs. Previous Years



Total ACM per Month FY 2012 vs. Previous Years



Total CARGO per Month FY 2012 vs. Previous Years



Traffic Data

TOTAL ARRIVAL PAX			
Month	FY12	FY11	Var %
Jan	218,154	177,386	22.98%
Feb	221,181	182,889	20.94%
Mar	259,065	197,952	30.87%
Apr	263,436	222,993	18.14%
May	242,336	208,811	16.06%
Jun	336,813	278,591	20.90%
Jul	313,059	322,221	-2.84%
Aug	289,430	225,339	28.44%
Sep	244,151	230,895	5.74%
Oct	266,026	227,821	16.77%
Nov		230,905	0.00%
Dec		219,027	0.00%
YTD October	2,653,651	2,274,898	16.65%
Total	2,653,651	2,724,830	

TOTAL DEPARTURE PAX		
FY12	FY11	Var %
245,074	211,614	15.81%
204,410	165,943	23.18%
247,124	188,251	31.27%
265,784	222,533	19.44%
237,320	200,016	18.65%
282,802	221,971	27.40%
341,407	305,748	11.66%
313,856	262,141	19.73%
301,790	285,658	5.65%
260,558	226,741	14.91%
	240,357	0.00%
	211,923	0.00%
2,700,125	2,290,616	17.88%
2,700,125	2,742,896	

TOTAL PAX COMBINED		
FY12	FY11	Var %
463,228	389,000	19.08%
425,591	348,832	22.00%
506,189	386,203	31.07%
529,220	445,526	18.79%
479,656	408,827	17.32%
619,615	500,562	23.78%
654,466	627,969	4.22%
603,286	487,480	23.76%
545,941	516,553	5.69%
526,584	454,562	15.84%
	471,262	0.00%
	430,950	0.00%
5,353,776	4,565,514	17.27%
5,353,776	5,467,726	

TOTAL ARRIVAL ACM			
Month	FY12	FY11	Var %
Jan	2,555	2,487	2.73%
Feb	2,363	2,167	9.04%
Mar	2,769	2,556	8.33%
Apr	2,807	2,564	9.48%
May	2,792	2,645	5.56%
Jun	3,120	2,777	12.35%
Jul	3,230	3,038	6.32%
Aug	3,114	2,833	9.92%
Sep	2,786	2,735	1.86%
Oct	2,860	2,737	4.49%
Nov		2,628	0.00%
Dec		2,547	0.00%
YTD October	28,396	26,539	7.00%
Total	28,396	31,714	

TOTAL DEPARTURE ACM		
FY12	FY11	Var %
2,560	2,495	2.61%
2,350	2,166	8.49%
2,776	2,548	8.95%
2,800	2,570	8.95%
2,802	2,648	5.82%
3,118	2,775	12.36%
3,229	3,038	6.29%
3,114	2,835	9.84%
2,778	2,734	1.61%
2,860	2,731	4.72%
	2,625	0.00%
	2,547	0.00%
28,387	26,540	6.96%
28,387	31,712	

TOTAL ACM COMBINED		
FY12	FY11	Var %
5,115	4,982	2.67%
4,713	4,333	8.77%
5,545	5,104	8.64%
5,607	5,134	9.21%
5,594	5,293	5.69%
6,238	5,552	12.36%
6,459	6,076	6.30%
6,228	5,668	9.88%
5,564	5,469	1.74%
5,720	5,468	4.61%
	5,253	0.00%
	5,094	0.00%
56,783	53,079	6.98%
56,783	63,426	

TOTAL ARRIVAL CARGO TONS			
Month	FY12	FY11	Var %
Jan	3,960	4,089	-3.16%
Feb	4,046	3,665	10.39%
Mar	4,716	4,398	7.22%
Apr	5,061	4,248	19.15%
May	4,284	4,352	-1.58%
Jun	4,945	4,024	22.87%
Jul	5,148	4,713	9.22%
Aug	4,748	4,671	1.65%
Sep	5,034	3,989	26.18%
Oct	5,196	4,545	14.34%
Nov		3,830	0.00%
Dec		4,759	0.00%
YTD October	47,138	42,696	10.40%
Total	47,138	51,285	

TOTAL DEPARTURE CARGO TONS		
FY12	FY11	Var %
2,871	2,851	0.71%
2,684	2,349	14.28%
3,325	3,315	0.30%
3,258	2,838	14.81%
3,254	2,900	12.21%
3,076	2,872	7.09%
3,404	3,157	7.81%
2,609	3,106	-15.99%
3,118	2,925	6.62%
2,857	3,068	-6.88%
	2,484	0.00%
	3,034	0.00%
30,456	29,380	3.66%
30,456	34,898	

TOTAL CARGO COMBINED TONS		
FY12	FY11	Var %
6,831	6,940	-1.57%
6,731	6,014	11.91%
8,041	7,714	4.25%
8,319	7,086	17.41%
7,538	7,252	3.94%
8,021	6,897	16.30%
8,551	7,870	8.66%
7,357	7,777	-5.39%
8,152	6,914	17.91%
8,053	7,612	5.79%
	6,314	0.00%
	7,794	0.00%
77,594	72,076	7.66%
77,594	86,184	