



QUEEN ALIA INTERNATIONAL AIRPORT MONTHLY TRAFFIC STATISTICS DECEMBER 2019

INTRODUCTION

▪ December 2019

Queen Alia International Airport (QAIA) has achieved a new milestone for annual passenger (PAX) traffic, receiving 8,924,080 PAX during 2019, indicating a 5.9% increase compared with 2018. Moreover, year-to-date (YTD) aircraft movements (ACM) reached 79,740, marking a 3.7% rise, whereas YTD handled cargo amounted to 102,459 tons, signifying a marginal 1.6% decrease.

As for December 2019, QAIA welcomed 659,591 passengers, recording a 4.7% surge as opposed to the same month the previous year. Furthermore, ACM totaled at 6,121, up by 2.5%, while handled cargo settled at 8,280 tons, down by 9.1%.

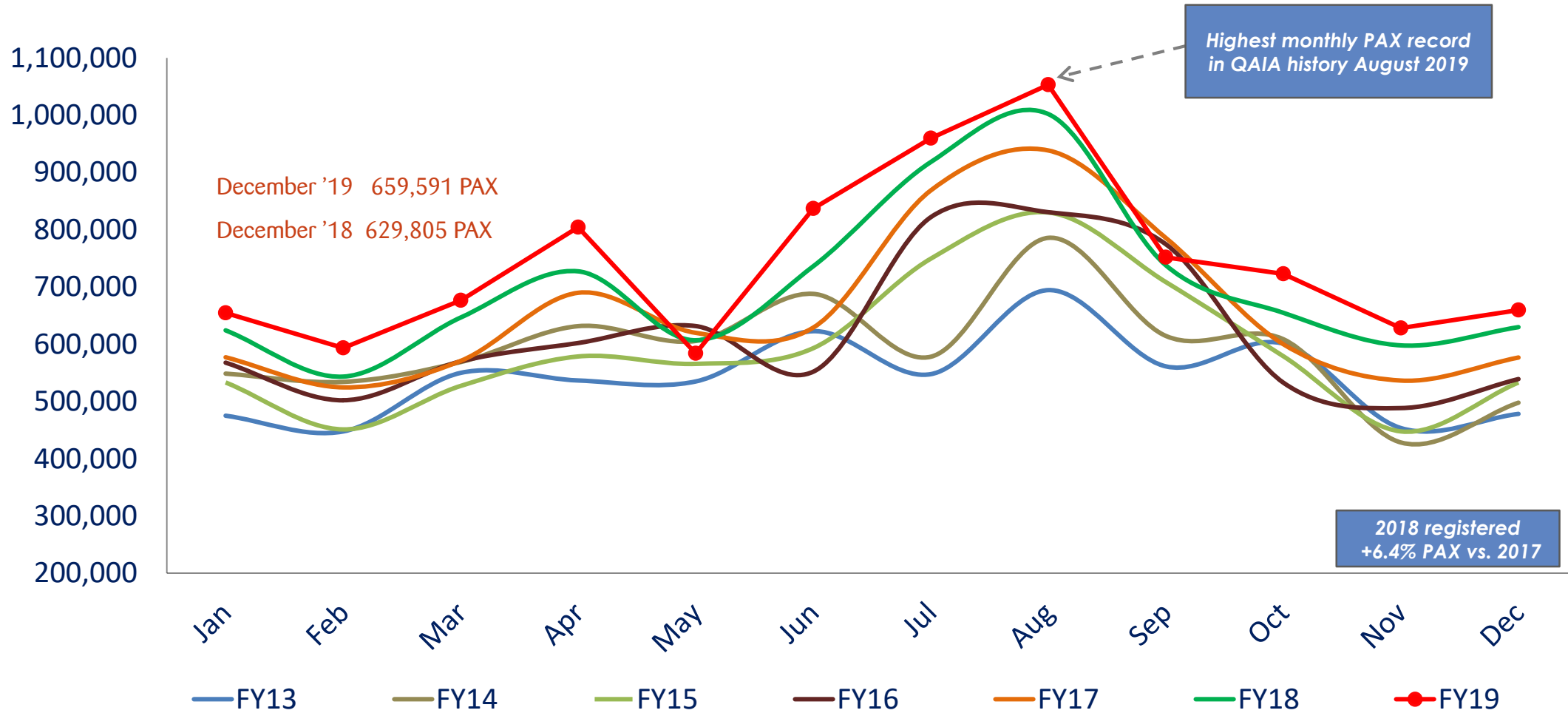


□ About Airport International Group (AIG)

Airport International Group is a Jordanian company that harnesses the airport management and construction expertise of regional and international partners in order to rehabilitate, expand and operate Jordan's premier gateway, Queen Alia International Airport. Airport International Group was awarded its 25-year Build-Operate-Transfer (BOT) concession in 2007 by the Jordanian Government after an open global tender overseen by the International Finance Corporation (World Bank).



PASSENGERS TRAFFIC TOTAL PAX PER MONTH FY VS PREV YRS



PASSENGERS TRAFFIC DATA REPORT

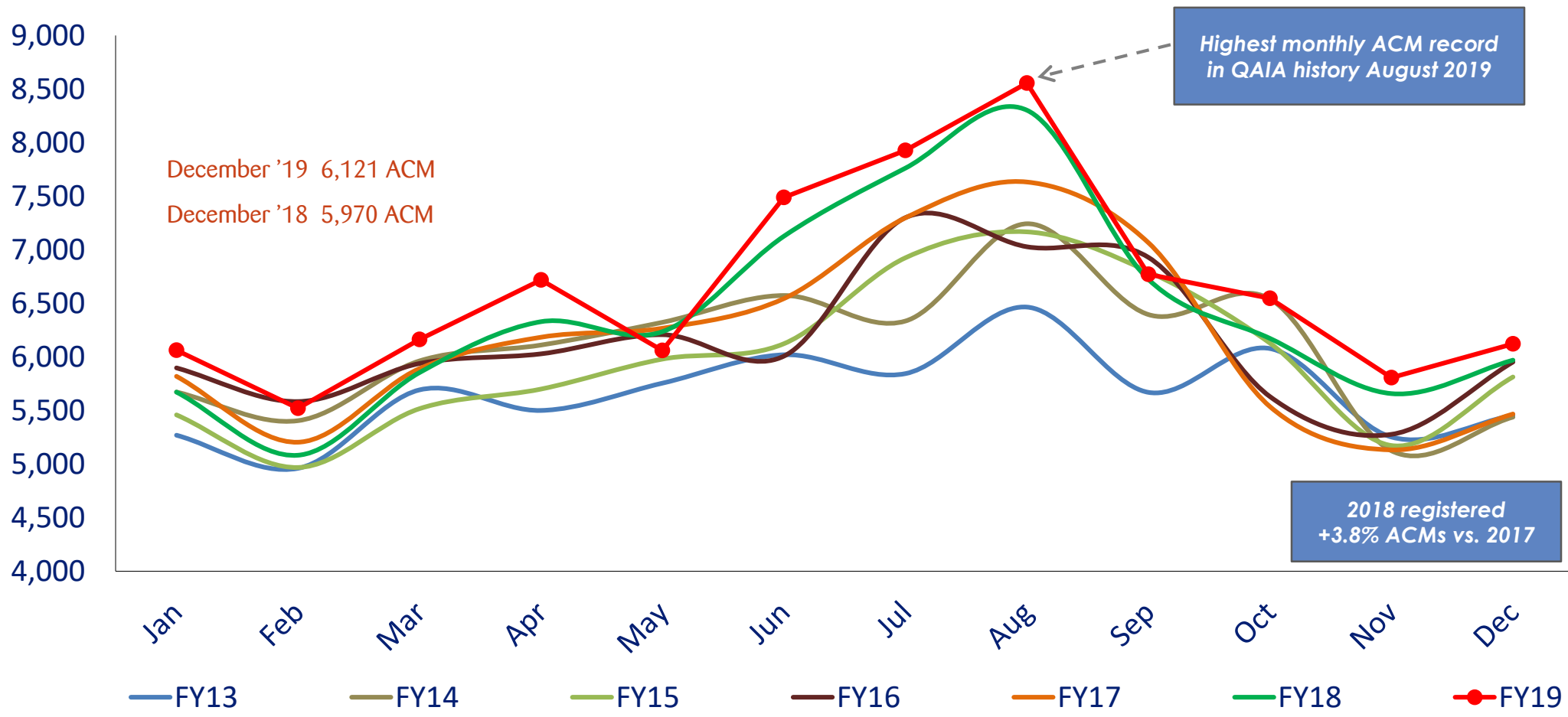
| TOTAL ARRIVAL PAX | | | |
|-------------------|------------------|------------------|-------|
| Month | FY19 | FY18 | Var % |
| Jan | 304,646 | 293,427 | 3.8% |
| Feb | 314,151 | 289,227 | 8.6% |
| Mar | 353,328 | 340,887 | 3.6% |
| Apr | 397,927 | 357,851 | 11.2% |
| May | 308,722 | 309,827 | -0.4% |
| Jun | 447,847 | 411,450 | 8.8% |
| Jul | 527,275 | 500,940 | 5.3% |
| Aug | 467,218 | 450,227 | 3.8% |
| Sep | 350,635 | 334,823 | 4.7% |
| Oct | 369,676 | 333,321 | 10.9% |
| Nov | 306,140 | 294,837 | 3.8% |
| Dec | 326,160 | 315,193 | 3.5% |
| YTD December | 4,473,725 | 4,232,010 | 5.7% |
| | 4,473,725 | 4,232,010 | |

| TOTAL DEPARTURE PAX | | |
|---------------------|------------------|-------|
| FY19 | FY18 | Var % |
| 349,897 | 330,780 | 5.8% |
| 279,276 | 254,144 | 9.9% |
| 323,119 | 305,692 | 5.7% |
| 406,226 | 369,450 | 10.0% |
| 274,940 | 297,041 | -7.4% |
| 388,922 | 324,742 | 19.8% |
| 432,285 | 417,267 | 3.6% |
| 586,007 | 551,783 | 6.2% |
| 401,175 | 402,981 | -0.4% |
| 353,116 | 321,470 | 9.8% |
| 321,961 | 303,054 | 6.2% |
| 333,431 | 314,612 | 6.0% |
| 4,450,355 | 4,193,016 | 6.1% |
| 4,450,355 | 4,193,016 | |

| TOTAL PAX COMBINED | | |
|--------------------|------------------|-------|
| FY19 | FY18 | Var % |
| 654,543 | 624,207 | 4.9% |
| 593,427 | 543,371 | 9.2% |
| 676,447 | 646,579 | 4.6% |
| 804,153 | 727,301 | 10.6% |
| 583,662 | 606,868 | -3.8% |
| 836,769 | 736,192 | 13.7% |
| 959,560 | 918,207 | 4.5% |
| 1,053,225 | 1,002,010 | 5.1% |
| 751,810 | 737,804 | 1.9% |
| 722,792 | 654,791 | 10.4% |
| 628,101 | 597,891 | 5.1% |
| 659,591 | 629,805 | 4.7% |
| 8,924,080 | 8,425,026 | 5.9% |
| 8,924,080 | 8,425,026 | |

AIRCRAFT MOVEMENTS

TOTAL ACM PER MONTH FY VS PREV YRS



AIRCRAFT MOVEMENTS DATA REPORT

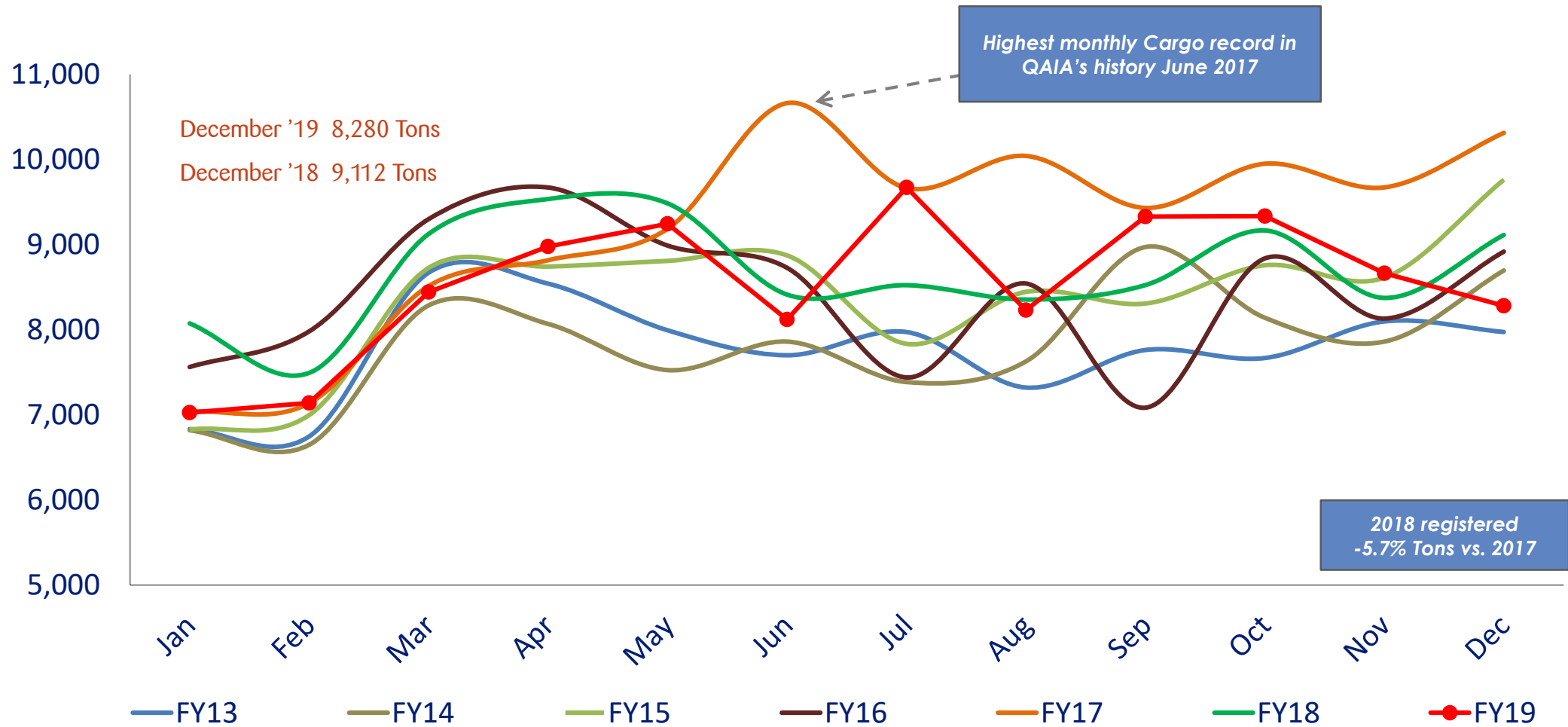
| Month | TOTAL ARRIVAL ACM | | |
|--------------|-------------------|---------------|-------|
| | FY19 | FY18 | Var % |
| Jan | 3,030 | 2,833 | 7.0% |
| Feb | 2,764 | 2,543 | 8.7% |
| Mar | 3,079 | 2,924 | 5.3% |
| Apr | 3,357 | 3,166 | 6.0% |
| May | 3,029 | 3,113 | -2.7% |
| Jun | 3,743 | 3,566 | 5.0% |
| Jul | 3,966 | 3,881 | 2.2% |
| Aug | 4,277 | 4,150 | 3.1% |
| Sep | 3,394 | 3,362 | 1.0% |
| Oct | 3,275 | 3,091 | 6.0% |
| Nov | 2,905 | 2,829 | 2.7% |
| Dec | 3,061 | 2,983 | 2.6% |
| YTD December | 39,880 | 38,441 | 3.7% |
| Total | 39,880 | 38,441 | |

| Month | TOTAL DEPARTURE ACM | | |
|--------------|---------------------|---------------|-------|
| | FY19 | FY18 | Var % |
| Jan | 3,033 | 2,839 | 6.8% |
| Feb | 2,757 | 2,540 | 8.5% |
| Mar | 3,083 | 2,930 | 5.2% |
| Apr | 3,360 | 3,163 | 6.2% |
| May | 3,032 | 3,123 | -2.9% |
| Jun | 3,746 | 3,561 | 5.2% |
| Jul | 3,961 | 3,881 | 2.1% |
| Aug | 4,278 | 4,152 | 3.0% |
| Sep | 3,377 | 3,361 | 0.5% |
| Oct | 3,272 | 3,082 | 6.2% |
| Nov | 2,901 | 2,829 | 2.5% |
| Dec | 3,060 | 2,987 | 2.4% |
| YTD December | 39,860 | 38,448 | 3.7% |
| Total | 39,860 | 38,448 | |

| Month | TOTAL ACM COMBINED | | |
|--------------|--------------------|---------------|-------|
| | FY19 | FY18 | Var % |
| Jan | 6,063 | 5,672 | 6.9% |
| Feb | 5,521 | 5,083 | 8.6% |
| Mar | 6,162 | 5,854 | 5.3% |
| Apr | 6,717 | 6,329 | 6.1% |
| May | 6,061 | 6,236 | -2.8% |
| Jun | 7,489 | 7,127 | 5.1% |
| Jul | 7,927 | 7,762 | 2.1% |
| Aug | 8,555 | 8,302 | 3.0% |
| Sep | 6,771 | 6,723 | 0.7% |
| Oct | 6,547 | 6,173 | 6.1% |
| Nov | 5,806 | 5,658 | 2.6% |
| Dec | 6,121 | 5,970 | 2.5% |
| YTD December | 79,740 | 76,889 | 3.7% |
| Total | 79,740 | 76,889 | |

CARGO TRAFFIC

TOTAL CARGO PER MONTH FY VS PREV YRS



CARGO DATA REPORT

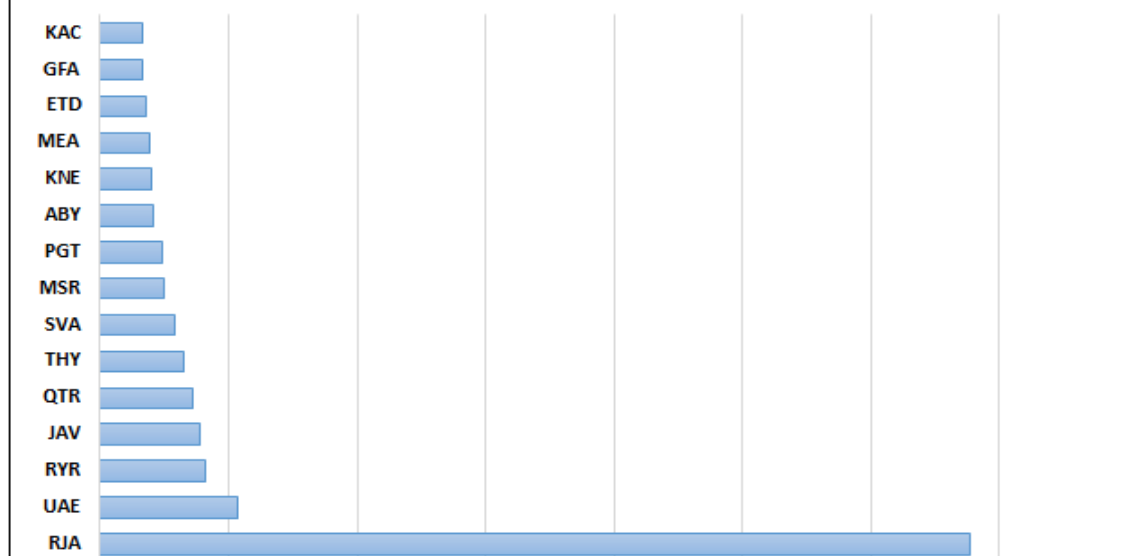
| TOTAL ARRIVAL CARGO TONS | | | |
|--------------------------|---------------|---------------|--------|
| Month | FY19 | FY18 | Var % |
| Jan | 4,047 | 4,787 | -15.4% |
| Feb | 3,996 | 4,476 | -10.7% |
| Mar | 5,239 | 5,593 | -6.3% |
| Apr | 5,254 | 5,505 | -4.6% |
| May | 5,772 | 5,723 | 0.9% |
| Jun | 5,083 | 5,090 | -0.1% |
| Jul | 5,889 | 5,209 | 13.0% |
| Aug | 4,627 | 4,936 | -6.3% |
| Sep | 4,833 | 4,748 | 1.8% |
| Oct | 5,225 | 5,402 | -3.3% |
| Nov | 5,064 | 4,938 | 2.5% |
| Dec | 4,899 | 5,461 | -10.3% |
| YTD December | 59,929 | 61,868 | -3.1% |
| Total | 59,929 | 61,868 | |

| TOTAL DEPARTURE CARGO TONS | | |
|----------------------------|---------------|-------|
| FY19 | FY18 | Var % |
| 2,979 | 3,287 | -9.4% |
| 3,143 | 3,017 | 4.2% |
| 3,203 | 3,530 | -9.3% |
| 3,725 | 4,029 | -7.5% |
| 3,470 | 3,760 | -7.7% |
| 3,037 | 3,322 | -8.6% |
| 3,783 | 3,313 | 14.2% |
| 3,603 | 3,418 | 5.4% |
| 4,495 | 3,776 | 19.1% |
| 4,111 | 3,763 | 9.2% |
| 3,601 | 3,435 | 4.8% |
| 3,380 | 3,651 | -7.4% |
| 42,531 | 42,302 | 0.5% |
| 42,531 | 42,302 | |

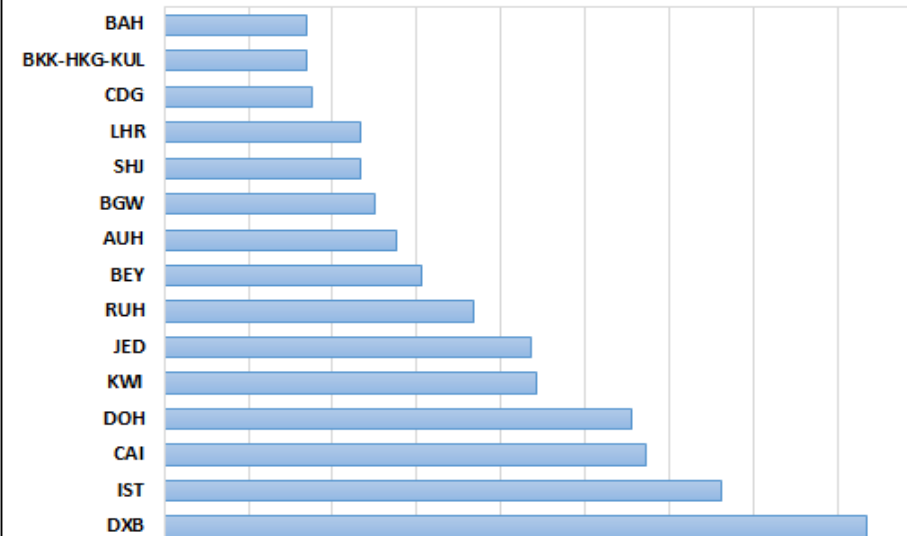
| TOTAL CARGO COMBINED TONS | | |
|---------------------------|----------------|--------|
| FY19 | FY18 | Var % |
| 7,026 | 8,074 | -13.0% |
| 7,139 | 7,493 | -4.7% |
| 8,442 | 9,124 | -7.5% |
| 8,979 | 9,534 | -5.8% |
| 9,243 | 9,483 | -2.5% |
| 8,119 | 8,412 | -3.5% |
| 9,672 | 8,522 | 13.5% |
| 8,230 | 8,353 | -1.5% |
| 9,329 | 8,524 | 9.4% |
| 9,335 | 9,165 | 1.9% |
| 8,665 | 8,373 | 3.5% |
| 8,280 | 9,112 | -9.1% |
| 102,459 | 104,170 | -1.6% |
| 102,459 | 104,170 | |

TOP ROUTES & AIRLINES (IN TERMS OF PAX)

TOP AIRLINES - YTD CUMULATIVE

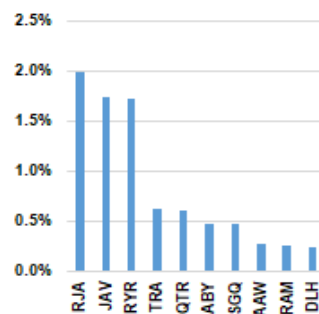


TOP ROUTES - YTD CUMULATIVE



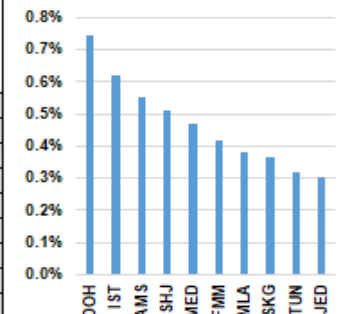
AIRLINES WITH POSITIVE CONTRIBUTION - MTD December' 19

| Rank | Code | Airline | Impact to Overall Traffic Change |
|------|------|--------------------|----------------------------------|
| 1 | RJA | ROYAL JORDANIAN | 2.0% |
| 2 | JAV | JORDAN AVIATION | 1.7% |
| 3 | RZR | RYANAIR | 1.7% |
| 4 | TRA | TRANSAVIA | 0.6% |
| 5 | QTR | QATAR AIRWAYS | 0.6% |
| 6 | ABY | AIR ARABIA | 0.5% |
| 7 | SGQ | SAUDIGULF AIRLINES | 0.5% |
| 8 | AAW | AFRIQIYAH AIRWAYS | 0.3% |
| 9 | RAM | ROYAL AIR MAROC | 0.2% |
| 10 | DLH | LUFTHANSA | 0.2% |



ROUTES WITH POSITIVE CONTRIBUTION - MTD December' 19

| Rank | Code | Airport | Impact to Overall Traffic Change |
|------|------|--------------|----------------------------------|
| 1 | DOH | DOHA | 0.7% |
| 2 | IST | ISTANBUL | 0.6% |
| 3 | AMS | AMSTERDAM | 0.6% |
| 4 | SHJ | SHARJAH | 0.5% |
| 5 | MED | MADINAH | 0.5% |
| 6 | FMM | MEMMINGEN | 0.4% |
| 7 | MLA | MALTA | 0.4% |
| 8 | SKG | THESSALONIKI | 0.4% |
| 9 | TUN | TUNIS | 0.3% |
| 10 | JED | JEDDAH | 0.3% |



THANK YOU

Contact Us

Airport International Group

Tel (Offices): +962 445 3000

Fax (Offices): +962 445 3444

Airport Information Desk: +962 6 500 2777

www.aig.aero

www.qaiairport.com

