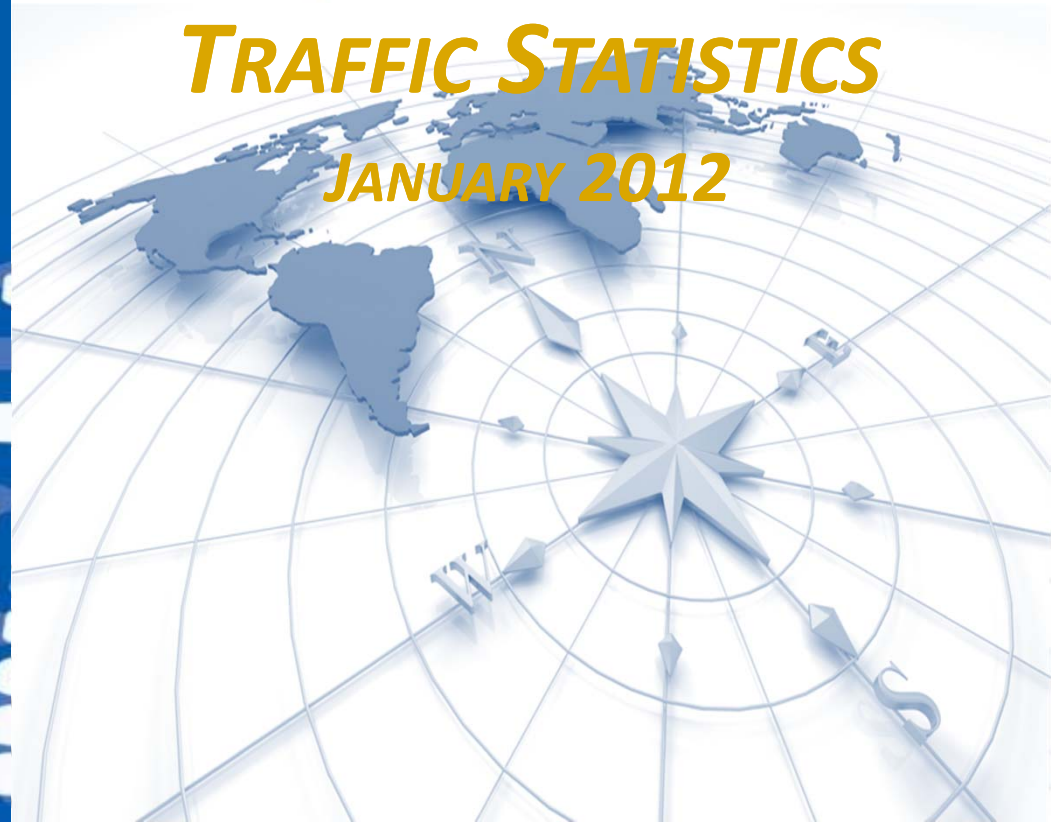




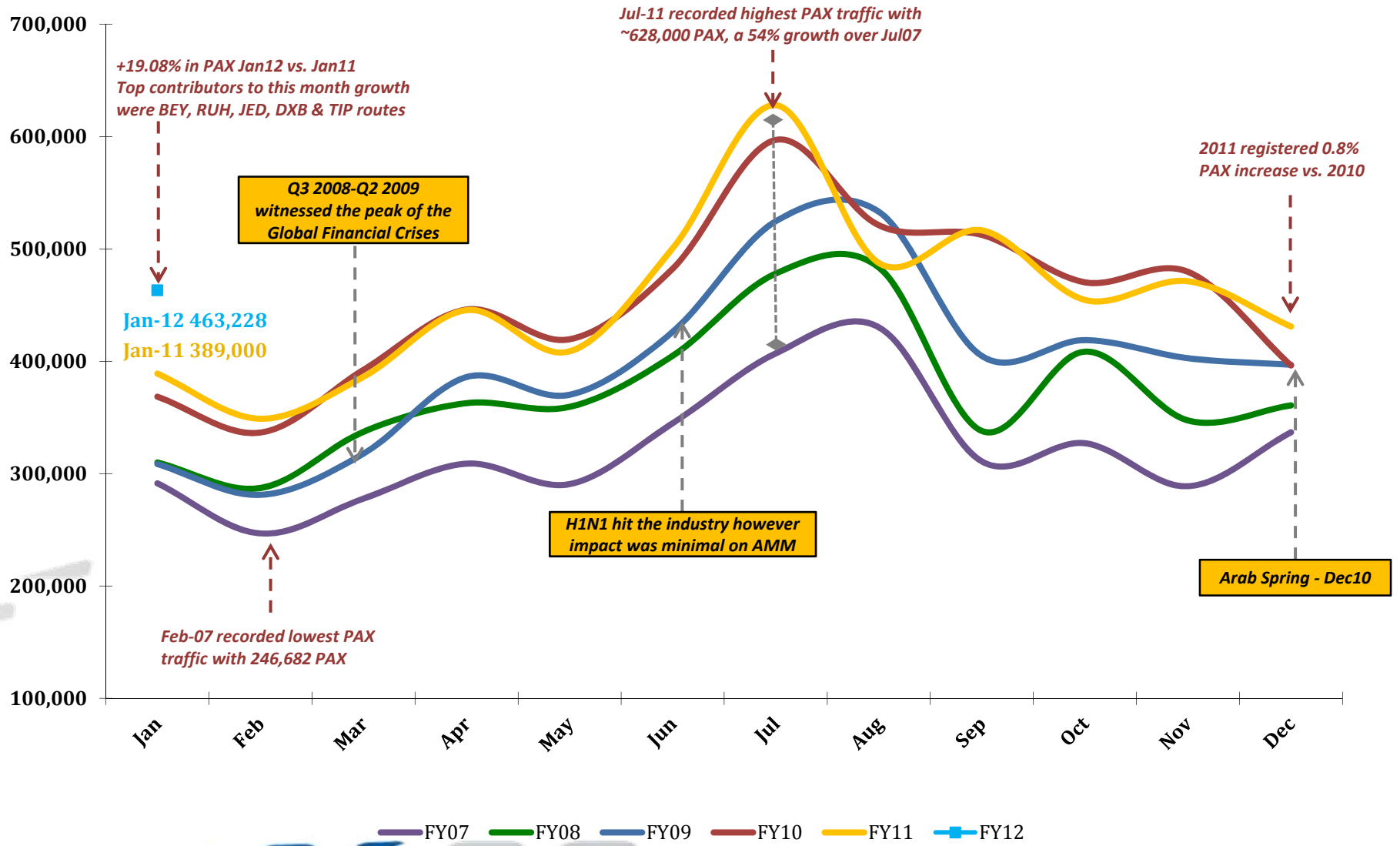
Airport International Group

مجموعة المطار الدولي

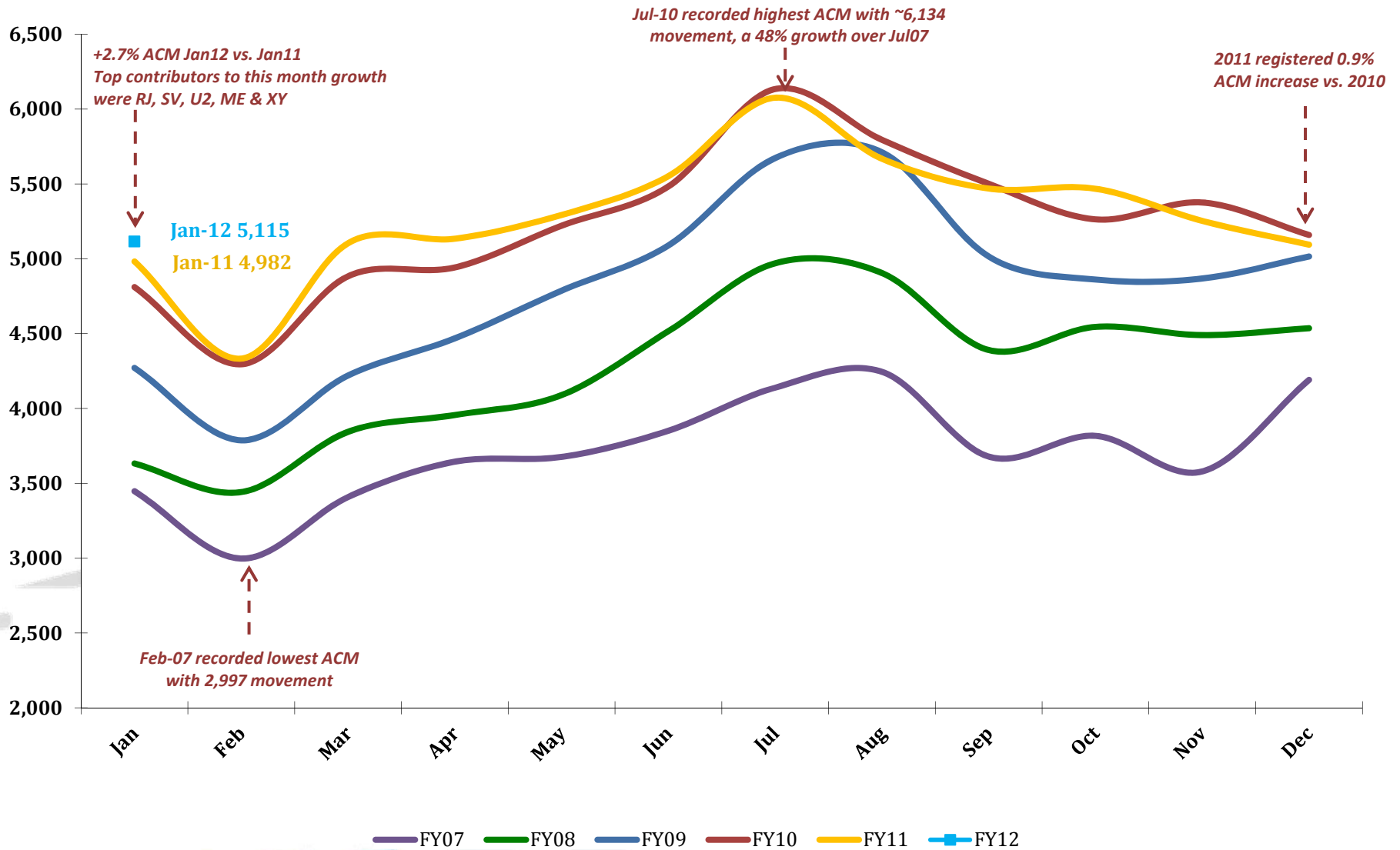
***QAIA MONTHLY
TRAFFIC STATISTICS
JANUARY 2012***



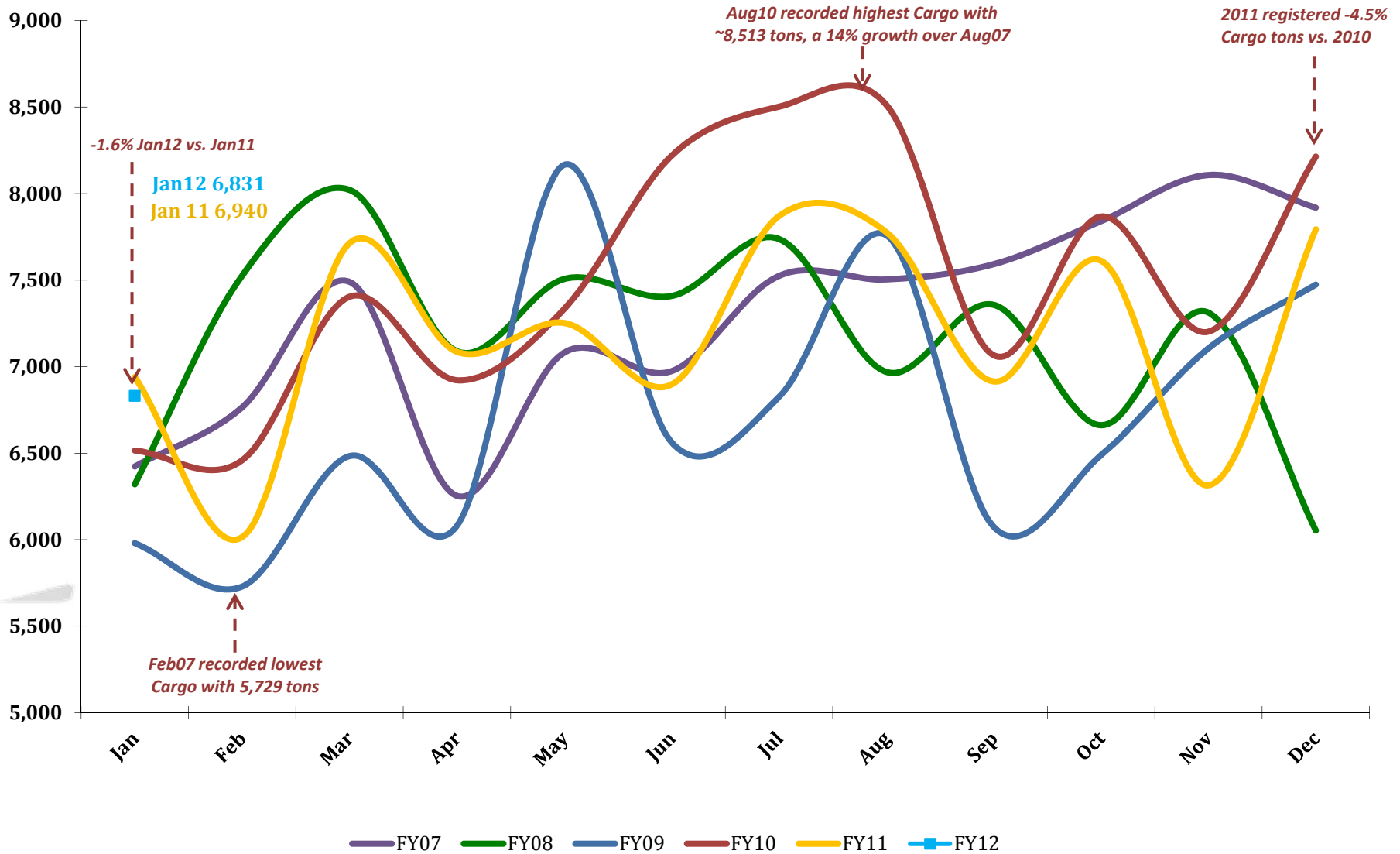
Total PAX per Month FY 2012 vs. Previous Years



Total ACM per Month FY 2012 vs. Previous Years



Total CARGO per Month FY 2012 vs. Previous Years



Traffic Data

TOTAL ARRIVAL PAX			
Month	FY12	FY11	Var %
Jan	218,154	177,386	22.98%
Feb		182,889	0.00%
Mar		197,952	0.00%
Apr		222,993	0.00%
May		208,811	0.00%
Jun		278,591	0.00%
Jul		322,221	0.00%
Aug		225,339	0.00%
Sep		230,895	0.00%
Oct		227,821	0.00%
Nov		230,905	0.00%
Dec		219,027	0.00%
YTD December	218,154	177,386	22.98%
Year-over-Year Growth		1.07%	

TOTAL DEPARTURE PAX		
FY12	FY11	Var %
245,074	211,614	15.81%
	165,943	0.00%
	188,251	0.00%
	222,533	0.00%
	200,016	0.00%
	221,971	0.00%
	305,748	0.00%
	262,141	0.00%
	285,658	0.00%
	226,741	0.00%
	240,357	0.00%
	211,923	0.00%
245,074	211,614	15.81%
Year-over-Year Growth	0.61%	

TOTAL PAX COMBINED		
FY12	FY11	Var %
463,228	389,000	19.08%
	348,832	0.00%
	386,203	0.00%
	445,526	0.00%
	408,827	0.00%
	500,562	0.00%
	627,969	0.00%
	487,480	0.00%
	516,553	0.00%
	454,562	0.00%
	471,262	0.00%
	430,950	0.00%
463,228	389,000	19.08%
Year-over-Year Growth	0.84%	

TOTAL ARRIVAL ACM			
Month	FY12	FY11	Var %
Jan	2,555	2,487	2.73%
Feb		2,167	0.00%
Mar		2,556	0.00%
Apr		2,564	0.00%
May		2,645	0.00%
Jun		2,777	0.00%
Jul		3,038	0.00%
Aug		2,833	0.00%
Sep		2,735	0.00%
Oct		2,737	0.00%
Nov		2,628	0.00%
Dec		2,547	0.00%
YTD December	2,555	2,487	2.73%
Year-over-Year Growth		0.89%	

TOTAL DEPARTURE ACM		
FY12	FY11	Var %
2,560	2,495	2.61%
	2,166	0.00%
	2,548	0.00%
	2,570	0.00%
	2,648	0.00%
	2,775	0.00%
	3,038	0.00%
	2,835	0.00%
	2,734	0.00%
	2,731	0.00%
	2,625	0.00%
	2,547	0.00%
2,560	2,495	2.61%
Year-over-Year Growth	0.90%	

TOTAL ACM COMBINED		
FY12	FY11	Var %
5,115	4,982	2.67%
	4,333	0.00%
	5,104	0.00%
	5,134	0.00%
	5,293	0.00%
	5,552	0.00%
	6,076	0.00%
	5,668	0.00%
	5,469	0.00%
	5,468	0.00%
	5,253	0.00%
	5,094	0.00%
5,115	4,982	2.67%
Year-over-Year Growth	0.90%	

TOTAL ARRIVAL CARGO TONS			
Month	FY12	FY11	Var %
Jan	3,960	4,089	-3.16%
Feb		3,665	0.00%
Mar		4,398	0.00%
Apr		4,248	0.00%
May		4,352	0.00%
Jun		4,024	0.00%
Jul		4,713	0.00%
Aug		4,671	0.00%
Sep		3,989	0.00%
Oct		4,545	0.00%
Nov		3,830	0.00%
Dec		4,759	0.00%
YTD December	3,960	4,089	-3.16%
Year-over-Year Growth		-0.84%	

TOTAL DEPARTURE CARGO TONS		
FY12	FY11	Var %
2,871	2,851	0.71%
	2,349	0.00%
	3,315	0.00%
	2,838	0.00%
	2,900	0.00%
	2,872	0.00%
	3,157	0.00%
	3,106	0.00%
	2,925	0.00%
	3,068	0.00%
	2,484	0.00%
	3,034	0.00%
2,871	2,851	0.71%
Year-over-Year Growth	-9.35%	

TOTAL CARGO COMBINED TONS		
FY12	FY11	Var %
6,831	6,940	-1.57%
	6,014	0.00%
	7,714	0.00%
	7,086	0.00%
	7,252	0.00%
	6,897	0.00%
	7,870	0.00%
	7,777	0.00%
	6,914	0.00%
	7,612	0.00%
	6,314	0.00%
	7,794	0.00%
6,831	6,940	-1.57%
Year-over-Year Growth	-4.47%	