



Airport International Group مجموعة المطار الدولي

Queen Alia International Airport Monthly statistics Report 30 September 2013



Executive Summary:

The positive momentum carried through 2013, maintained growth during 03Q13 in terms of PAX and ACM.

Even with the surrounding geopolitical environment, neighboring unrest and economic conditions worldwide; AMM continues the recovery and growth it witnessed from the adverse effects of the Arab Spring throughout 2013 and 2012 over 2011.

Nonetheless; AIG constantly monitors the economical and external environment changes, and their possible effect on traffic (positive/negative), in addition to routes and airlines' performance.

- **Passenger (PAX)** traffic for **September-13** witnessed a growth of **2.80%** over September-12, and **2.95%** over YTD September 2012.
- **Aircraft Movements (ACMs)** movements for **September-13** showed a growth of **1.89%** over September-12, and **0.22%** growth over YTD September 2012.
- **Cargo & Freight Movements (CFMs)** Cargo movements for **September-13** showed a decline of **-4.80%** over September-12, and **-0.02%** over YTD September 2012.

On the Routes & Network development side, positive momentum has been witnessed through 03Q13, with additional new services, carriers and frequencies added/announced briefed in the below tables.

Airlines	Airport	City	Operation	Route Status	Effective
Royal Jordanian	ALG	Algiers	Scheduled	New Service	as of ... Feb-13
Neos Airlines	MXP	Milan	Scheduled	New service	as of ... Mar-13
Neos Airlines	BLQ	Bologna	Scheduled	New service	as of ... Mar-13
Al Naser Airlines	Multiple	Iraqi cities	Scheduled	New service	as of ... Apr-13
Iraqi Airways	BSR	Basra	Scheduled	New Service	as of ... May-13
Jordan Aviation	JED	Jeddah	Scheduled	New Service	as of ... May-13
NAS Airlines	MED	Medina	Scheduled	New Service	as of ... May-13
Saudi Airlines	DMM	Dammam	Scheduled	New Service	as of ... Jun-13
Yemenia Airways	HOD	Hodeidah	Scheduled	New Service	as of ... Jun-13
Embassy Air Iraq	BGW	Bagdad	Scheduled	New Service	as of ... Jun-13
Royal Jordanian	LOS	Lagos	Scheduled	New Service	as of ... Jul-13
Royal Jordanian	ACC	Accra	Scheduled	New Service	as of ... Jul-13
Air Cairo	HBE	Alexandria	Scheduled	New Service	as of ... Jul-13
Jordan Aviation	KWI	Kuwait	Scheduled	New Service	as of ... Jul-13
RAK Airways	RKT	Ras Al Khaimah	Scheduled	New Service	as of ... Aug-13
Royal Falcon	EBL	Erbil	Scheduled	New Service	as of ... Sep-13

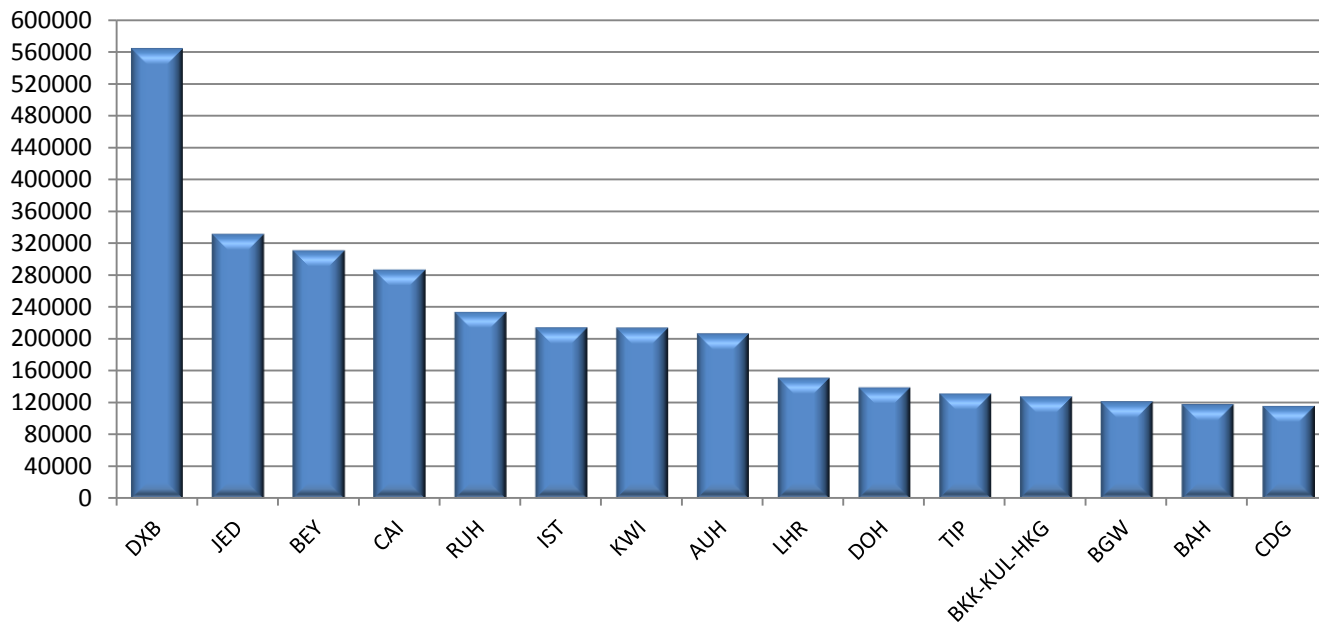
Queen Alia International Airport Quarterly Report 2013: 03Q13

Airlines	Airport	City	Operation	Route Status	Effective
Saudi Airlines	JED	Jeddah	Scheduled	Increase Freq.	as of ... Mar-13
Ukraine Airlines	KBP	Kiev	Scheduled	Increase Freq.	as of ... Mar-13
British Airways	LHR	London	Scheduled	Increase Freq.	as of ... Apr-13
Austrian Airlines	VIE	Vienna	Scheduled	Increase Freq.	as of ... Apr-13
Etihad Airways	AUH	Abu Dhabi	Scheduled	Increase Freq.	as of ... Apr-13
Iraqi Airways	EBL	Erbil	Scheduled	Increase Freq.	as of ... Apr-13
Libyan Airlines	TIP/BEN/MSR	-	Scheduled	Increase Freq.	as of ... Apr-13
Qatar Airways	DOH	Doha	Scheduled	Increase Freq.	as of ... Jun-13
NAS Airlines	RUH,JED	Riyadh, Jeddah	Scheduled	Increase Freq.	as of ... Jun-13
Yemenia Airways	SAH	Sana'a	Scheduled	Increase Freq.	as of ... Jun-13
Lufthansa Airlines	FRA	Frankfurt	Scheduled	Increase Freq.	as of ... Jun-13
Jazeera Airlines	KWI	Kuwait	Scheduled	Increase Freq.	as of ... Jun-13
Fly Dubai	DXB	Dubai	Scheduled	Increase Freq.	as of ... Jun-13
Ukrainian Airlines	KBP	Kiev	Scheduled	Increase Freq.	as of ... Jul-13
Oman Air	MCT	Muscat	Scheduled	Increase Freq.	as of ... Jul-13
Austrian Airlines	VIE	Vienna	Scheduled	Increase Freq.	as of ... Aug-13
Fly Dubai	DXB	Dubai	Scheduled	Increase Freq.	as of ... Aug-13
Kuwait Airways	KWI	Kuwait	Scheduled	Increase Freq.	as of ... Aug-13
Yemenia Airways	HOD/ADE	Hodeida/Aden	Scheduled	Increase Freq.	as of ... Aug-13
Royal Jordanian	EBL	Erbil	Scheduled	Increase Freq.	as of ... Aug-13
Royal Jordanian	FRA	Frankfurt	Scheduled	Increase Freq.	as of ... Aug-13
Royal Jordanian	KWI	Kuwait	Scheduled	Increase Freq.	as of ... Aug-13
Royal Jordanian	RUH	Riyadh	Scheduled	Increase Freq.	as of ... Aug-13
Royal Jordanian	TLV	Tel Aviv	Scheduled	Increase Freq.	as of ... Aug-13
Royal Jordanian	AAN	Al Ain	Scheduled	Increase Freq.	as of ... Sep-13
Royal Jordanian	LCA	Larnaca	Scheduled	Increase Freq.	as of ... Sep-13

**MoM announced schedule comparison*

The below chart represents our top 15 destinations based on PAX traffic.

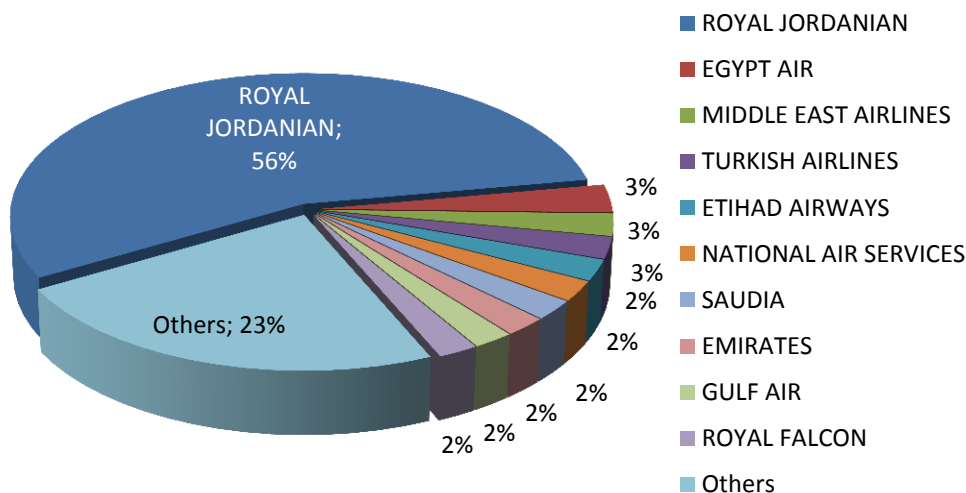
Top 15 Destinations in Q3 2013 - PAX Traffic



Within QAIA destinations network, our most significant markets were DXB, JED, BEY, CAI and RUH collectively having ~ **1,732,583** PAX which is **34.9%** of the bi-directional 03Q13 YTD QAIA traffic.

In terms of the broader market (outside the MENA region), the most significant markets were IST, LHR, (BKK/KUL/HKG) and CDG collectively having ~ **612,309** PAX which is **12.3%** of the bi-directional 03Q13 YTD QAIA traffic.

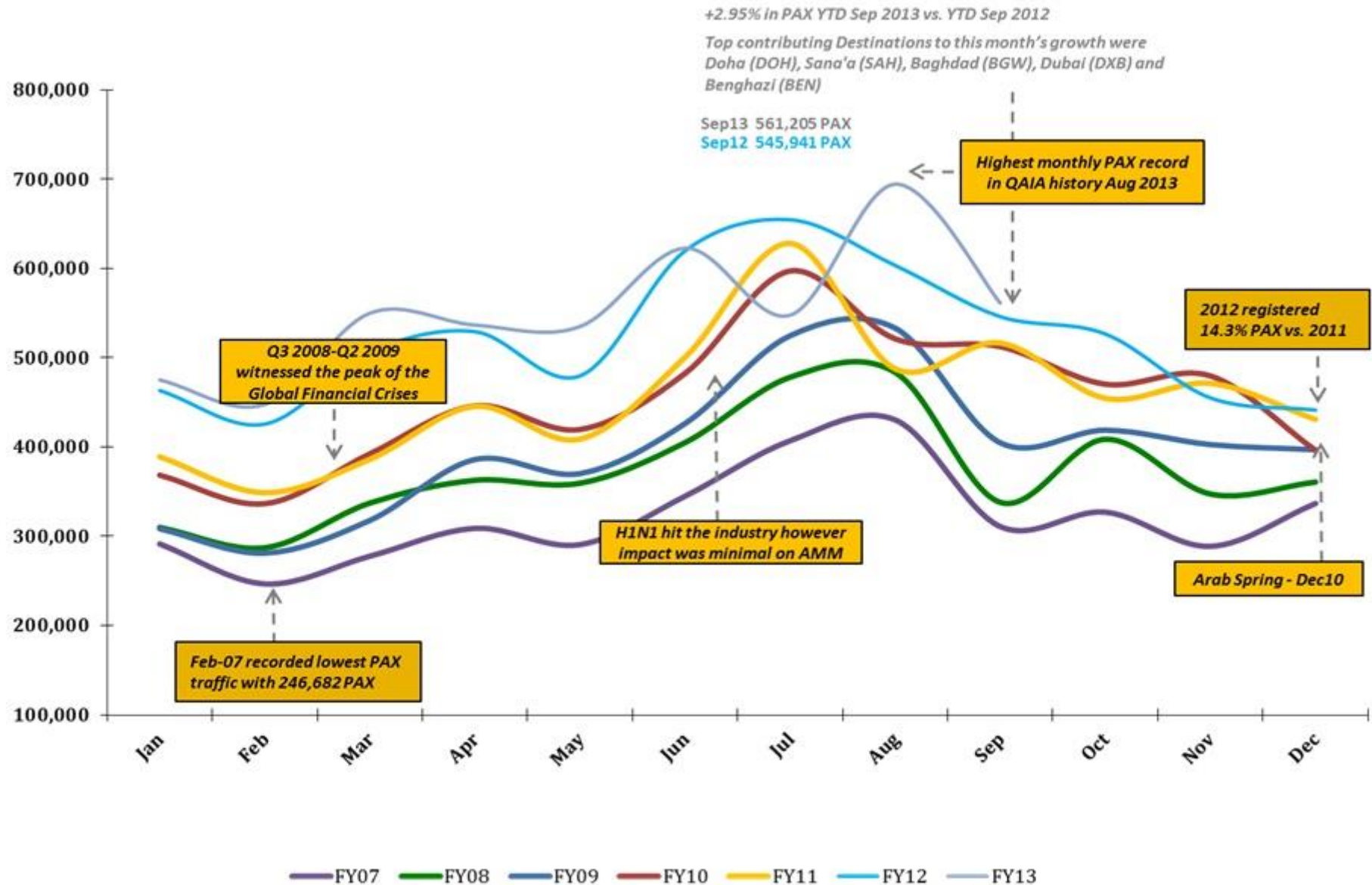
Top Airlines ACMs - YTD September 2013



In terms of ACMs, the top 5 airlines sorted in descending order were Royal Jordanian, Egypt Air, Middle East Airlines, Turkish Airlines and Etihad Airways.

The Pie represents our top 10 Airlines in Aircraft Movements.

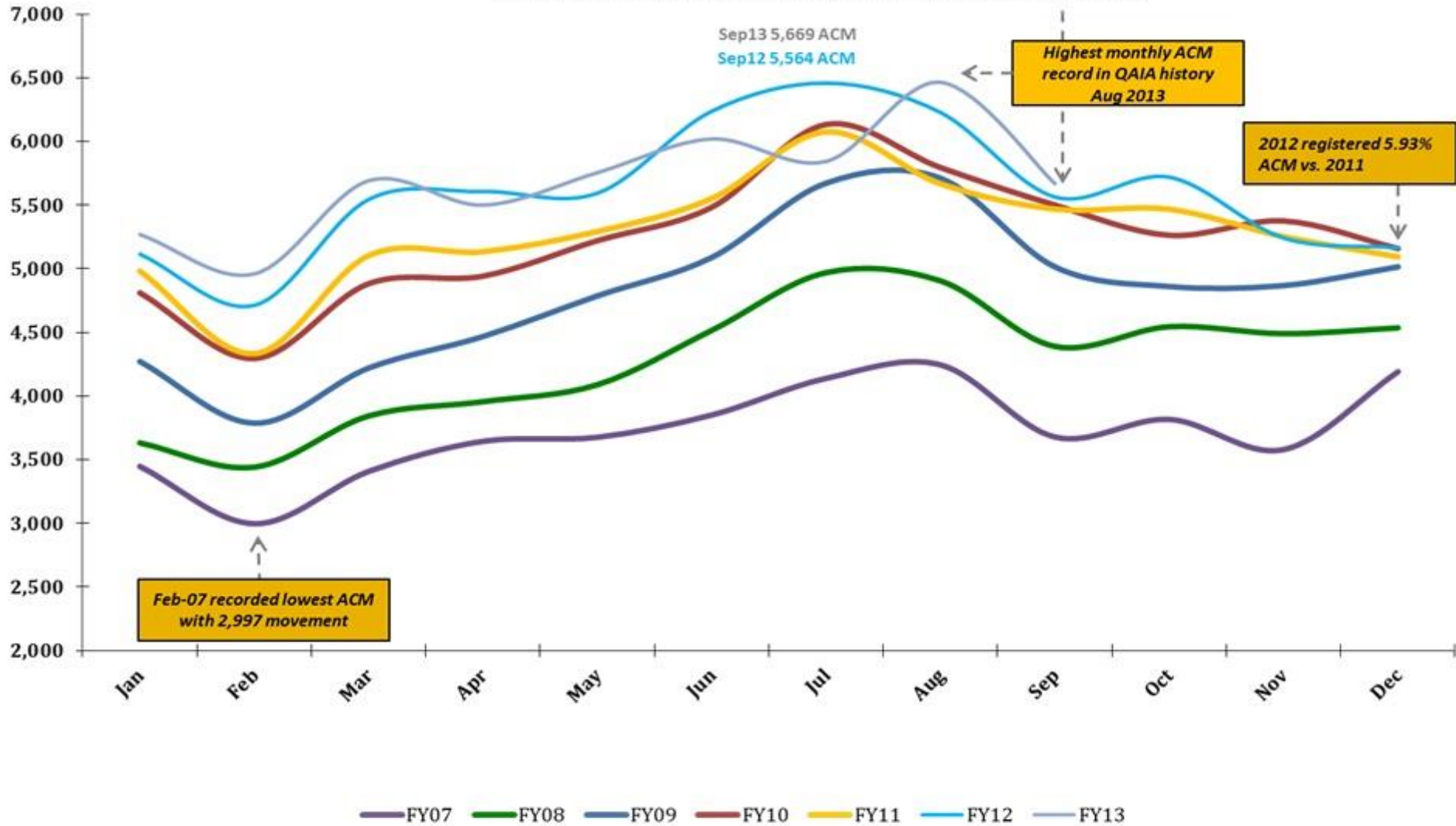
Queen Alia International Airport Quarterly Report 2013: 03Q13



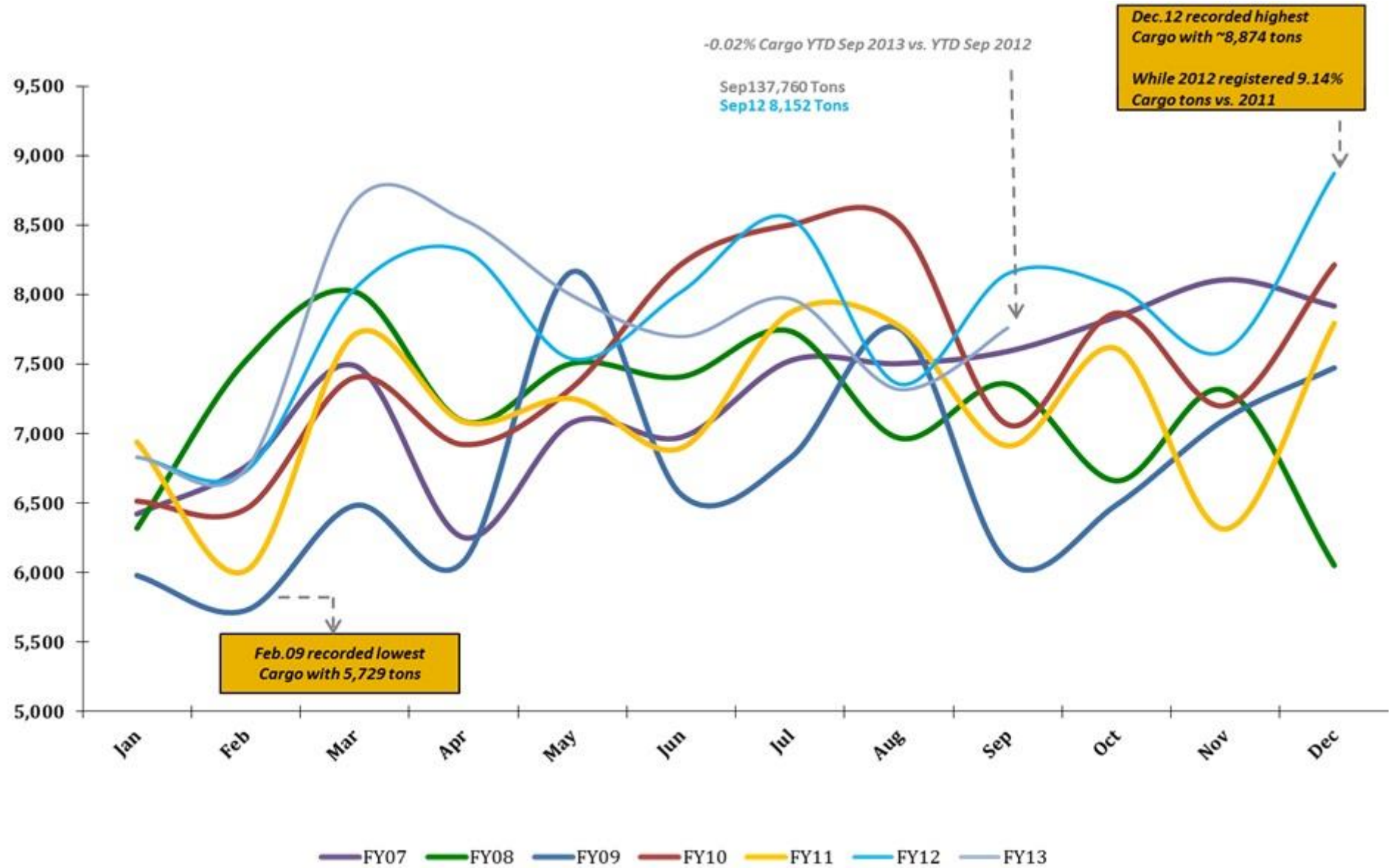
Queen Alia International Airport Quarterly Report 2013: 03Q13

+0.22% in ACM YTD Sep 2013 vs. YTD Sep 2012

Top contributing Airlines to this month's growth were MIDDLE EAST AIRLINES (MEA), IRAQI AIRWAYS (IAW), QATAR AIRWAYS (QTR), FLY DUBAI (FDB) and YEMEN IA (IYE)



Queen Alia International Airport Quarterly Report 2013: 03Q13



Queen Alia International Airport Quarterly Report 2013: 03Q13

TOTAL ARRIVAL PAX			
Month	FY13	FY12	Var %
Jan	217,768	218,154	-0.18%
Feb	234,762	221,181	6.14%
Mar	284,339	259,065	9.76%
Apr	268,841	263,436	2.05%
May	274,710	242,336	13.36%
Jun	332,790	336,813	-1.19%
Jul	287,985	313,059	-8.01%
Aug	336,626	289,430	16.31%
Sep	248,087	244,151	1.61%
Oct	0	266,026	0.00%
Nov	0	217,971	0.00%
Dec	0	222,066	0.00%
YTD September	2,485,908	2,387,625	4.12%
Total	2,485,908	3,093,688	

TOTAL DEPARTURE PAX			
Month	FY13	FY12	Var %
Jan	257,301	245,074	4.99%
Feb	212,832	204,410	4.12%
Mar	265,522	247,124	7.44%
Apr	267,718	265,784	0.73%
May	260,188	237,320	9.64%
Jun	289,839	282,802	2.49%
Jul	259,636	341,407	-23.95%
Aug	357,717	313,856	13.97%
Sep	313,118	301,790	3.75%
Oct	0	280,558	0.00%
Nov	0	237,013	0.00%
Dec	0	219,222	0.00%
YTD September	2,483,871	2,439,567	1.82%
Total	2,483,871	3,156,360	

TOTAL PAX COMBINED			
Month	FY13	FY12	Var %
Jan	475,069	463,228	2.56%
Feb	447,594	425,591	5.17%
Mar	549,861	506,189	8.63%
Apr	536,559	529,220	1.39%
May	534,898	479,656	11.52%
Jun	622,629	619,615	0.49%
Jul	547,621	654,466	-16.33%
Aug	694,343	603,286	15.09%
Sep	561,205	545,941	2.80%
Oct	0	526,584	0.00%
Nov	0	454,984	0.00%
Dec	0	441,288	0.00%
YTD September	4,969,779	4,827,192	2.95%
Total	4,969,779	6,250,048	

TOTAL ARRIVAL ACM			
Month	FY13	FY12	Var %
Jan	2,634	2,555	3.09%
Feb	2,477	2,363	4.82%
Mar	2,848	2,769	2.85%
Apr	2,747	2,807	-2.14%
May	2,878	2,792	3.08%
Jun	3,014	3,120	-3.40%
Jul	2,923	3,230	-9.50%
Aug	3,231	3,114	3.76%
Sep	2,843	2,786	2.05%
Oct	0	2,860	0.00%
Nov	0	2,621	0.00%
Dec	0	2,585	0.00%
YTD September	25,595	25,536	0.23%
Total	25,595	33,602	

TOTAL DEPARTURE ACM			
Month	FY13	FY12	Var %
Jan	2,635	2,560	2.93%
Feb	2,483	2,350	5.66%
Mar	2,844	2,776	2.45%
Apr	2,753	2,800	-1.68%
May	2,877	2,802	2.68%
Jun	3,006	3,118	-3.59%
Jul	2,921	3,229	-9.54%
Aug	3,234	3,114	3.85%
Sep	2,826	2,778	1.73%
Oct	0	2,860	0.00%
Nov	0	2,621	0.00%
Dec	0	2,580	0.00%
YTD September	25,579	25,527	0.20%
Total	25,579	33,588	

TOTAL ACM COMBINED			
Month	FY13	FY12	Var %
Jan	5,269	5,115	3.01%
Feb	4,960	4,713	5.24%
Mar	5,692	5,545	2.65%
Apr	5,500	5,607	-1.91%
May	5,755	5,594	2.88%
Jun	6,020	6,238	-3.49%
Jul	5,844	6,459	-9.52%
Aug	6,465	6,228	3.81%
Sep	5,669	5,564	1.89%
Oct	0	5,720	0.00%
Nov	0	5,242	0.00%
Dec	0	5,165	0.00%
YTD September	51,174	51,063	0.22%
Total	51,174	67,190	

TOTAL ARRIVAL CARGO TONS			
Month	FY13	FY12	Var %
Jan	4,075	3,960	2.91%
Feb	4,005	4,046	-1.03%
Mar	5,170	4,716	9.62%
Apr	5,151	5,061	1.78%
May	4,945	4,284	15.44%
Jun	4,748	4,945	-3.98%
Jul	5,020	5,148	-2.47%
Aug	4,249	4,748	-10.52%
Sep	4,751	5,034	-5.61%
Oct	0	5,196	0.00%
Nov	0	4,549	0.00%
Dec	0	5,415	0.00%
YTD September	42,114	41,942	0.41%
Total	42,114	57,101	

TOTAL DEPARTURE CARGO TONS			
Month	FY13	FY12	Var %
Jan	2,756	2,871	-4.02%
Feb	2,740	2,684	2.07%
Mar	3,499	3,325	5.23%
Apr	3,389	3,258	4.02%
May	3,047	3,254	-6.36%
Jun	2,951	3,076	-4.08%
Jul	2,951	3,404	-13.30%
Aug	3,070	2,609	17.66%
Sep	3,009	3,118	-3.49%
Oct	0	2,857	0.00%
Nov	0	3,048	0.00%
Dec	0	3,459	0.00%
YTD September	27,411	27,599	-0.68%
Total	27,411	36,963	

TOTAL CARGO COMBINED TONS			
Month	FY13	FY12	Var %
Jan	6,831	6,831	0.00%
Feb	6,744	6,731	0.20%
Mar	8,669	8,041	7.80%
Apr	8,540	8,319	2.66%
May	7,992	7,538	6.03%
Jun	7,699	8,021	-4.02%
Jul	7,971	8,551	-6.78%
Aug	7,319	7,357	-0.53%
Sep	7,760	8,152	-4.80%
Oct	0	8,053	0.00%
Nov	0	7,597	0.00%
Dec	0	8,874	0.00%
YTD September	69,525	69,541	-0.02%
Total	69,525	94,064	

More Information:

For more information about QAIA, AIG & our Corporate Profile, kindly visit us at: www.aig.aero

Feedback & Comments:

For any feedback, comments or other enquiries, please do not hesitate to contact the Route Development Department at:

- *Tel: +962 (6) 445 3000*
- Fax: +962 (6) 445 3444*
- [*RD@aig.aero*](mailto:RD@aig.aero)
- Airport International Group*
- P.O. Box 39052*
- Amman 11104*
- Jordan*