



# QUEEN ALIA INTERNATIONAL AIRPORT

## MONTHLY TRAFFIC STATISTICS

### DECEMBER 2021

# INTRODUCTION

## December 2021

Queen Alia International Airport's (QAIA) year-to-date passenger (PAX) numbers for 2021 amounted to 4,559,336 - marking a 122.3% surge and 48.9% decline against 2020 and 2019 figures, respectively. Moreover, QAIA received 46,603 aircraft movements (ACM), which were 92.4% higher and 41.6% lower than the figures recorded in 2020 and 2019, respectively. QAIA also handled 58,278 tons of cargo, prompting a 20.8% increase and 43.1% drop compared to 2020 and 2019 figures, respectively.

As for year-on-year December figures, QAIA witnessed 469,954 PAX, 4,973 ACM and 5,245 tons of cargo - resulting in decreases of 28.8%, 18.8% and 36.7%, respectively, compared to the same month in 2019.



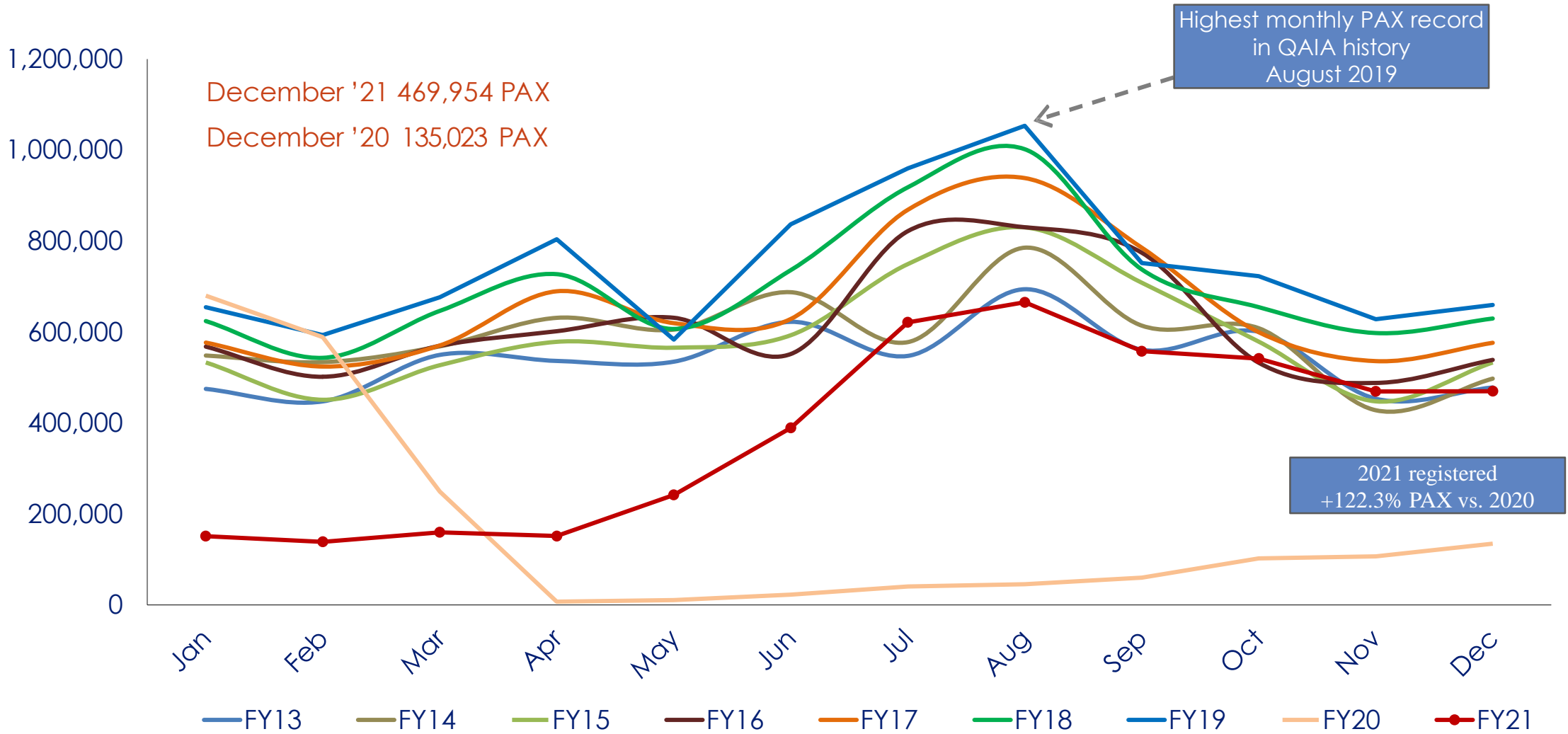
### □ About Airport International Group (AIG)

Airport International Group is a Jordanian company that harnesses the airport management and construction expertise of regional and international partners in order to rehabilitate, expand and operate Jordan's premier gateway, Queen Alia International Airport. Airport International Group was awarded its 25-year Build-Operate-Transfer (BOT) concession in 2007 by the Jordanian Government after an open global tender overseen by the International Finance Corporation (World Bank).



# PASSENGERS TRAFFIC

## TOTAL PAX PER MONTH FY VS PREV YRS



## PASSENGERS TRAFFIC DATA REPORT

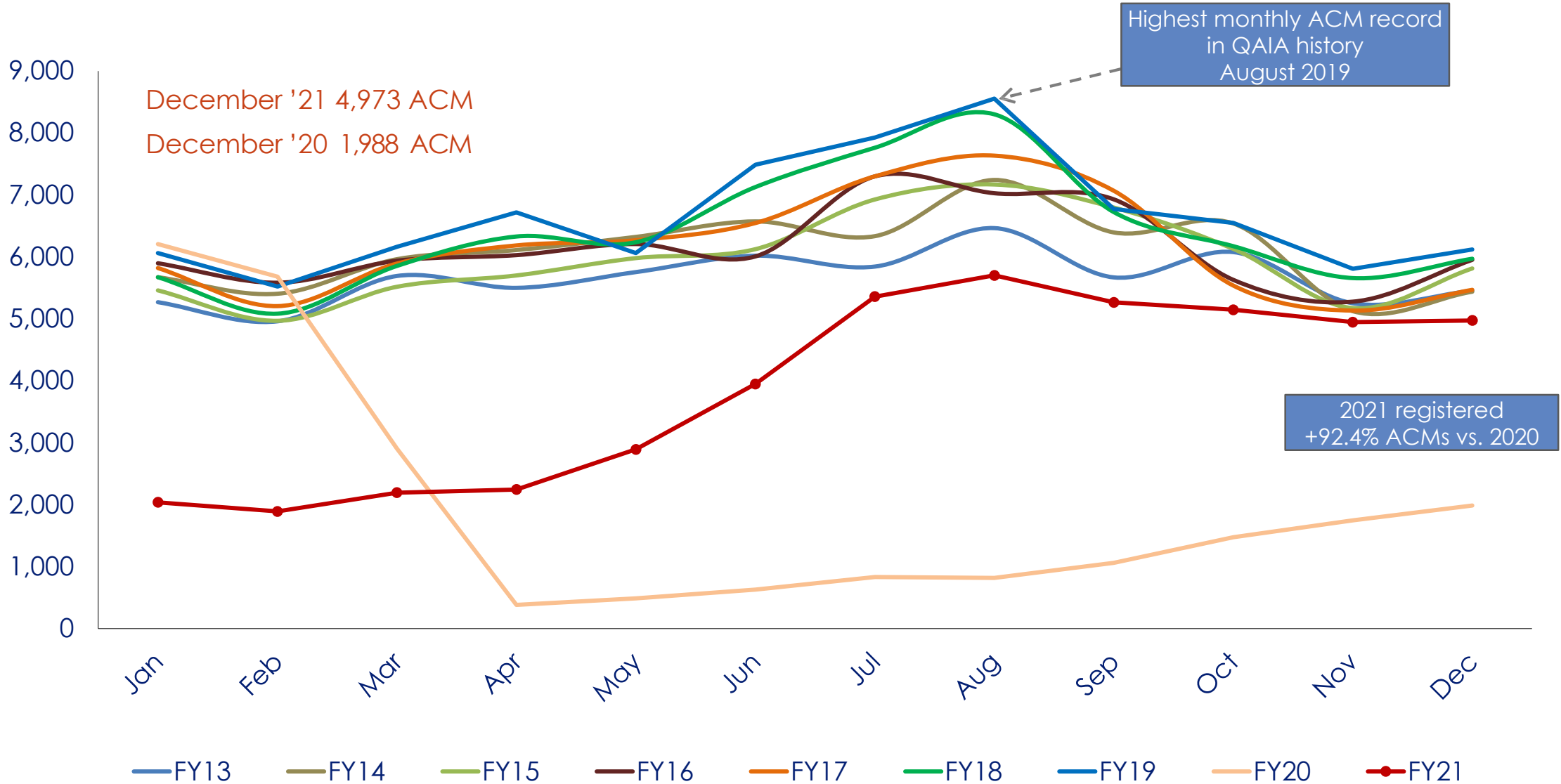
TOTAL ARRIVAL PAX			
Month	FY21	FY20	Var %
Jan	73,893	321,458	-77.0%
Feb	74,603	311,190	-76.0%
Mar	79,644	122,928	-35.2%
Apr	75,111	146	51345.9%
May	140,238	6,820	1956.3%
Jun	239,501	10,384	2206.4%
Jul	359,128	18,189	1874.4%
Aug	273,821	18,782	1357.9%
Sep	271,805	28,012	870.3%
Oct	285,150	55,807	411.0%
Nov	243,474	51,451	373.2%
Dec	223,981	65,090	244.1%
YTD December	<b>2,340,349</b>	<b>1,010,257</b>	<b>131.7%</b>
<b>Total</b>	<b>2,340,349</b>	<b>1,010,257</b>	

TOTAL DEPARTURE PAX		
FY21	FY20	Var %
77,598	358,333	-78.3%
64,452	277,643	-76.8%
80,188	126,517	-36.6%
76,540	7,444	928.2%
101,896	4,373	2230.1%
149,820	12,649	1084.4%
262,373	22,732	1054.2%
391,638	26,930	1354.3%
286,016	32,208	788.0%
256,479	46,518	451.4%
226,014	55,346	308.4%
245,973	69,933	251.7%
<b>2,218,987</b>	<b>1,040,626</b>	<b>113.2%</b>
<b>2,218,987</b>	<b>1,040,626</b>	

TOTAL PAX COMBINED		
FY21	FY20	Var %
151,491	679,791	-77.7%
139,055	588,833	-76.4%
159,832	249,445	-35.9%
151,651	7,590	1898.0%
242,134	11,193	2063.3%
389,321	23,033	1590.3%
621,501	40,921	1418.8%
665,459	45,712	1355.8%
557,821	60,220	826.3%
541,629	102,325	429.3%
469,488	106,797	339.6%
469,954	135,023	248.1%
<b>4,559,336</b>	<b>2,050,883</b>	<b>122.3%</b>
<b>4,559,336</b>	<b>2,050,883</b>	

# AIRCRAFT MOVEMENTS

## TOTAL ACM PER MONTH FY VS PREV YRS



## AIRCRAFT MOVEMENTS DATA REPORT

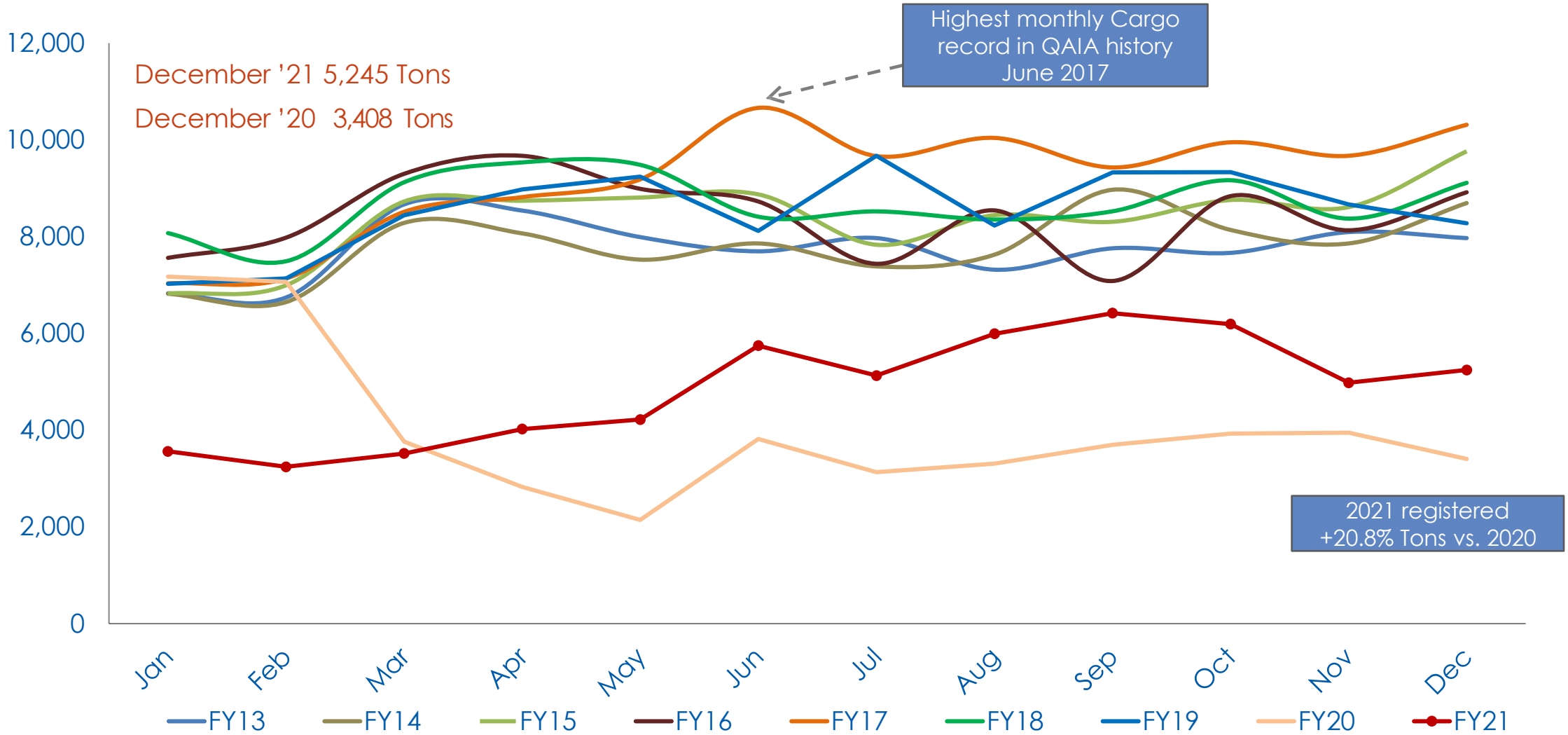
Month	TOTAL ARRIVAL ACM		
	FY21	FY20	Var %
Jan	1,023	3,103	-67.0%
Feb	946	2,840	-66.7%
Mar	1,094	1,456	-24.9%
Apr	1,122	191	487.4%
May	1,445	246	487.4%
Jun	1,968	313	528.8%
Jul	2,685	421	537.8%
Aug	2,845	410	593.9%
Sep	2,634	537	390.5%
Oct	2,573	738	248.6%
Nov	2,477	878	182.1%
Dec	2,486	995	149.8%
YTD December	<b>23,298</b>	<b>12,128</b>	<b>92.1%</b>
<b>Total</b>	<b>23,298</b>	<b>12,128</b>	

Month	TOTAL DEPARTURE ACM		
	FY21	FY20	Var %
Jan	1,015	3,102	-67.3%
Feb	945	2,842	-66.7%
Mar	1,101	1,449	-24.0%
Apr	1,123	193	481.9%
May	1,447	244	493.0%
Jun	1,981	315	528.9%
Jul	2,674	411	550.6%
Aug	2,857	409	598.5%
Sep	2,632	526	400.4%
Oct	2,573	738	248.6%
Nov	2,470	871	183.6%
Dec	2,487	993	150.5%
YTD December	<b>23,305</b>	<b>12,093</b>	<b>92.7%</b>
<b>Total</b>	<b>23,305</b>	<b>12,093</b>	

Month	TOTAL ACM COMBINED		
	FY21	FY20	Var %
Jan	2,038	6,205	-67.2%
Feb	1,891	5,682	-66.7%
Mar	2,195	2,905	-24.4%
Apr	2,245	384	484.6%
May	2,892	490	490.2%
Jun	3,949	628	528.8%
Jul	5,359	832	544.1%
Aug	5,702	819	596.2%
Sep	5,266	1,063	395.4%
Oct	5,146	1,476	248.6%
Nov	4,947	1,749	182.8%
Dec	4,973	1,988	150.2%
YTD December	<b>46,603</b>	<b>24,221</b>	<b>92.4%</b>
<b>Total</b>	<b>46,603</b>	<b>24,221</b>	

# CARGO TRAFFIC

## TOTAL CARGO PER MONTH FY VS PREV YRS



## CARGO DATA REPORT

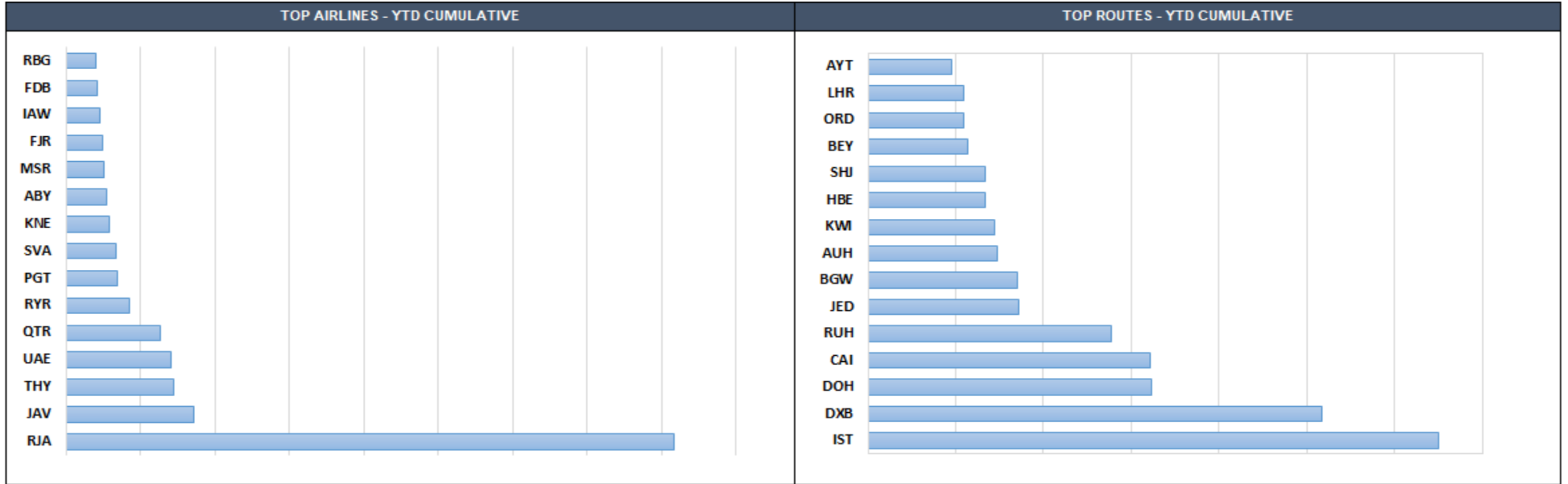
TOTAL ARRIVAL CARGO TONS			
Month	FY21	FY20	Var %
Jan	2,253	4,308	-47.7%
Feb	2,183	3,807	-42.7%
Mar	2,427	2,274	6.7%
Apr	2,636	1,515	74.0%
May	2,744	1,489	84.2%
Jun	3,485	2,295	51.9%
Jul	3,040	1,919	58.4%
Aug	3,313	2,099	57.9%
Sep	3,273	2,293	42.7%
Oct	3,414	2,718	25.6%
Nov	2,805	2,705	3.7%
Dec	3,252	2,369	37.3%
YTD December	<b>34,825</b>	<b>29,791</b>	<b>16.9%</b>
<b>Total</b>	<b>34,825</b>	<b>29,791</b>	

TOTAL DEPARTURE CARGO TONS		
FY21	FY20	Var %
1,309	2,868	-54.4%
1,061	3,259	-67.5%
1,093	1,489	-26.6%
1,387	1,312	5.7%
1,477	655	125.4%
2,263	1,526	48.3%
2,090	1,213	72.2%
2,680	1,210	121.5%
3,146	1,407	123.7%
2,778	1,213	129.1%
2,176	1,244	74.9%
1,993	1,039	91.8%
<b>23,452</b>	<b>18,435</b>	<b>27.2%</b>
<b>23,452</b>	<b>18,435</b>	

TOTAL CARGO COMBINED TONS		
FY21	FY20	Var %
3,562	7,176	-50.4%
3,243	7,066	-54.1%
3,519	3,763	-6.5%
4,023	2,827	42.3%
4,220	2,145	96.8%
5,748	3,821	50.4%
5,130	3,132	63.8%
5,993	3,308	81.2%
6,419	3,700	73.5%
6,192	3,930	57.5%
4,981	3,949	26.1%
5,245	3,408	53.9%
<b>58,278</b>	<b>48,226</b>	<b>20.8%</b>
<b>58,278</b>	<b>48,226</b>	



# TOP ROUTES & AIRLINES (IN TERMS OF PAX)



AIRLINES WITH POSITIVE CONTRIBUTION - MTD December '21				ROUTES WITH POSITIVE CONTRIBUTION - MTD December '21			
Rank	Code	Airline	Impact to Overall Traffic Change	Rank	Code	Airport	Impact to Overall Traffic Change
1	RJA	ROYAL JORDANIAN	131.3%	1	DXB	DUBAI	23.8%
2	RJR	RYANAIR	18.6%	2	IST	ISTANBUL	22.1%
3	KNE	FLYNAS	10.8%	3	RUH	RIYADH	15.9%
4	UAE	EMIRATES	9.9%	4	JED	JEDDAH	15.1%
5	QTR	QATAR AIRWAYS	8.5%	5	DOH	DOHA	14.1%
6	THY	TURKISH AIRLINES	8.0%	6	CAI	CAIRO	13.6%
7	JAV	JORDAN AVIATION	7.9%	7	KWI	KUWAIT	12.2%
8	PGT	PEGASUS AIRLINES	5.2%	8	AUH	ABU DHABI	11.3%
9	ETD	ETIHAD AIRWAYS	4.8%	9	LHR	LONDON-HEATHROW	10.1%
10	SVA	SAUDIA	4.8%	10	BEY	BEIRUT	6.8%



**THANK YOU**

**Contact Us**

**Airport International Group**

**Tel (Offices): +962 401 8142**

**Fax (Offices): +962 445 3444**

**Airport Information Desk: +962 6 500 2777**

**[www.aig.aero](http://www.aig.aero)**

**[www.qaiairport.com](http://www.qaiairport.com)**

