



Airport International Group
مجموعة المطار الدولي

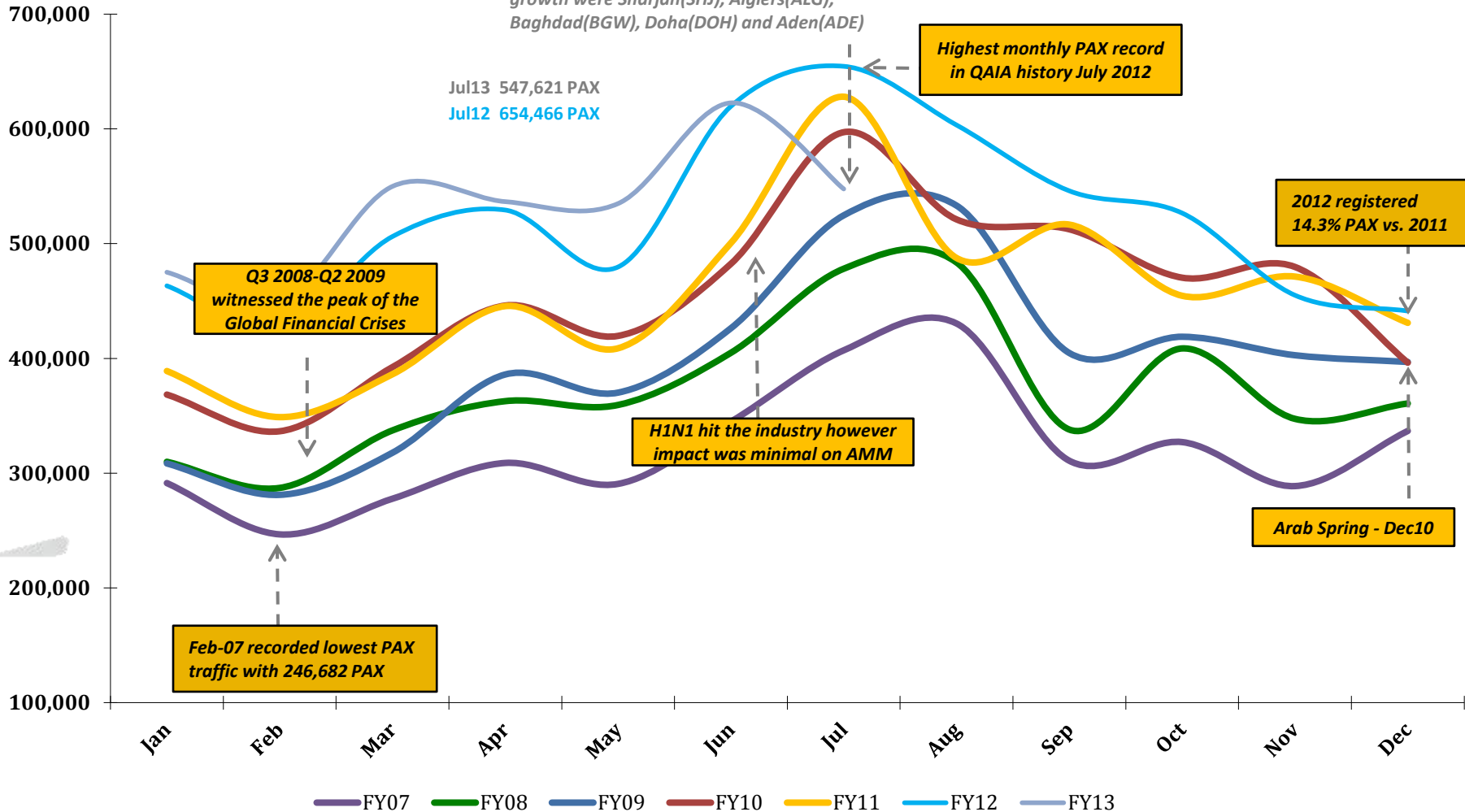
***QAIA MONTHLY
TRAFFIC STATISTICS
JULY 2013***



Total PAX per Month FY 2013 vs. Previous Years

+0.99% in PAX YTD Jul 2013 vs. YTD Jul 2012

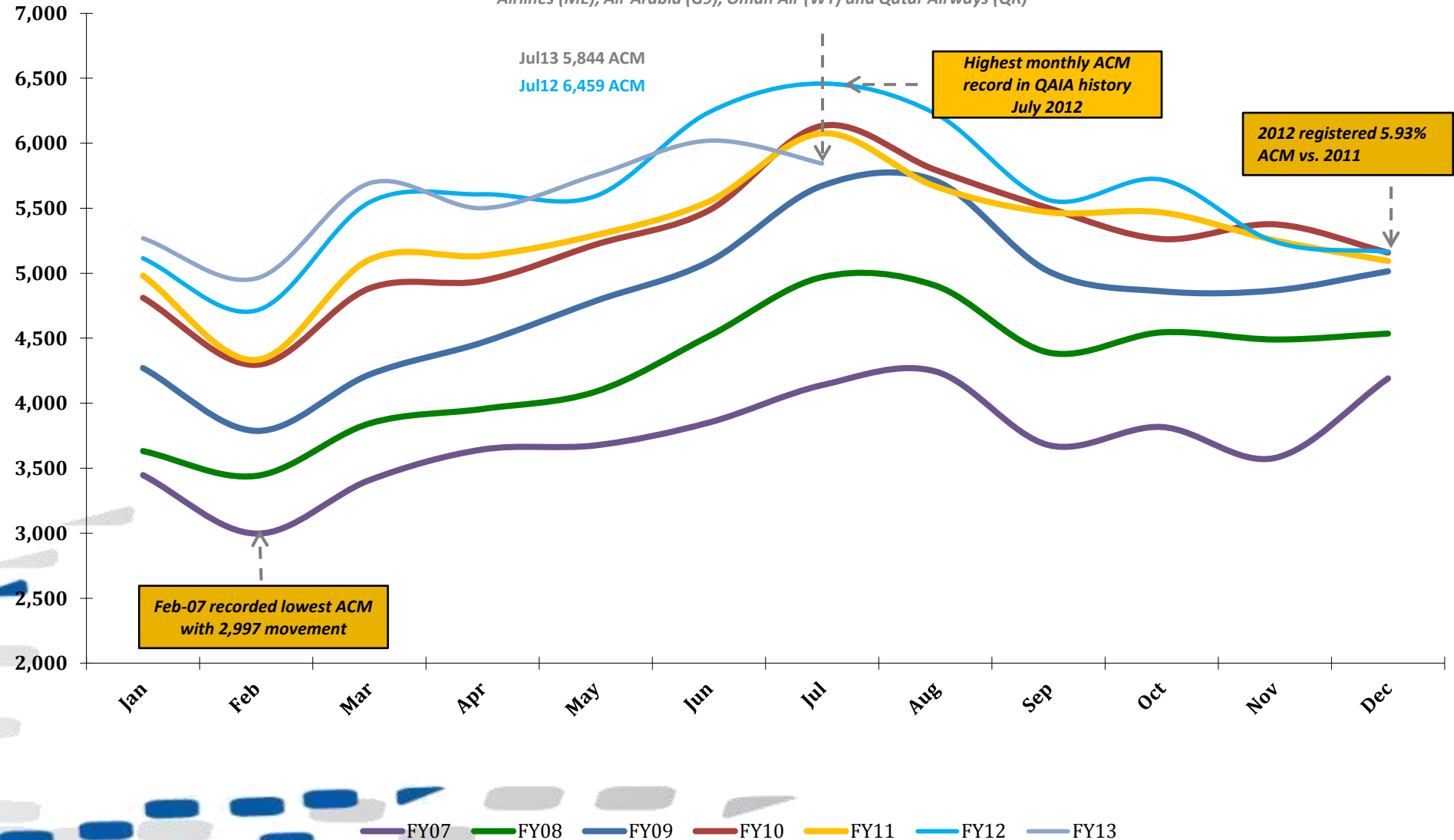
Top contributing Destinations to this month's growth were Sharjah(SHJ), Algiers(ALG), Baghdad(BGW), Doha(DOH) and Aden(ADE)



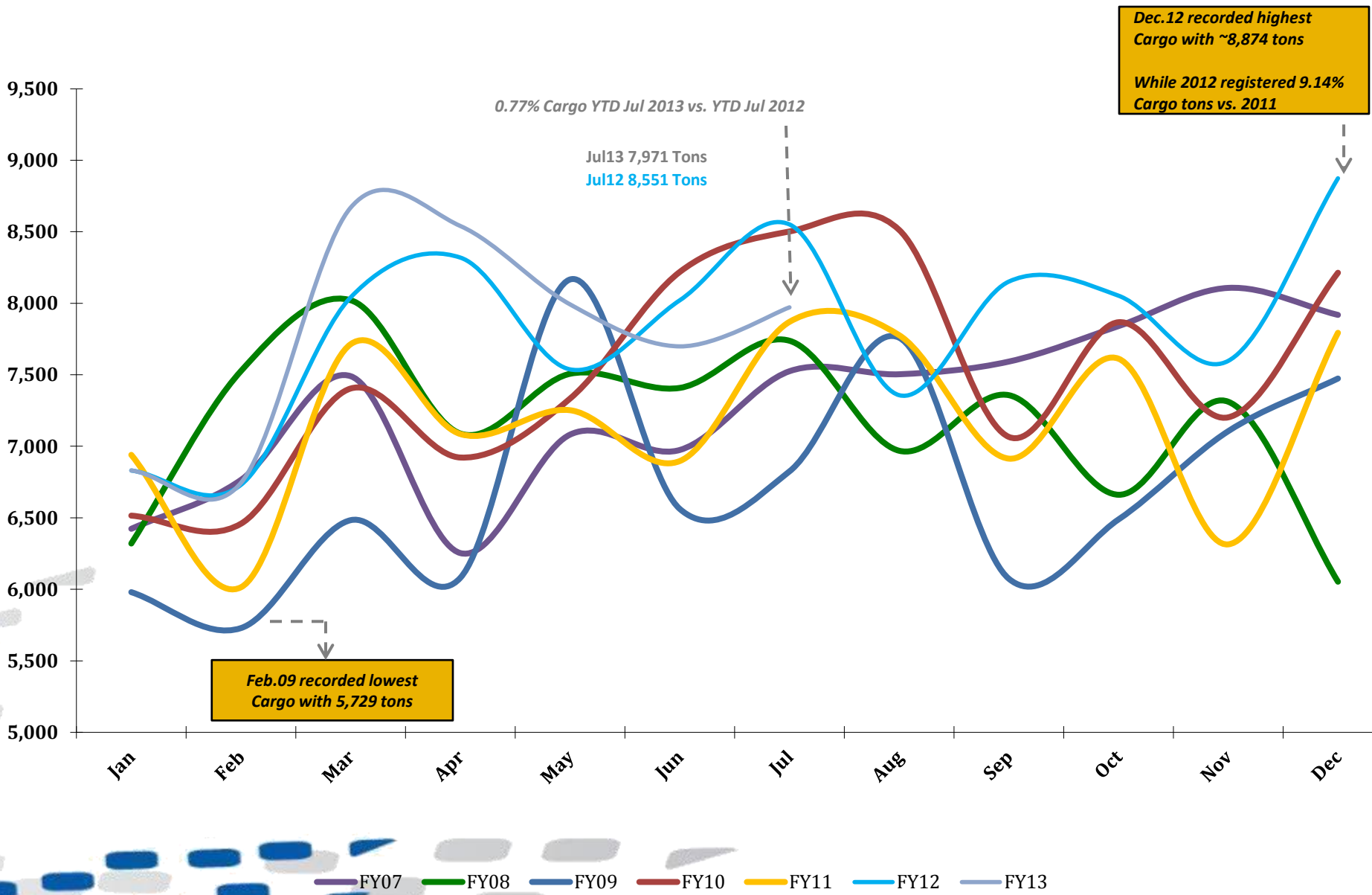
Total ACM per Month FY 2013 vs. Previous Years

-0.59% in ACM YTD Jul 2013 vs. YTD Jul 2012

Top contributing Airlines to this month's growth were Iraqi Airways (IA), Middle East Airlines (ME), Air Arabia (G9), Oman Air (WY) and Qatar Airways (QR)



Total CARGO per Month FY 2013 vs. Previous Years



Traffic Data - Public Stats

July 31, 2013

TOTAL ARRIVAL PAX			
Month	FY13	FY12	Var %
Jan	217,768	218,154	-0.18%
Feb	234,762	221,181	6.14%
Mar	284,339	259,065	9.76%
Apr	268,841	263,436	2.05%
May	274,710	242,336	13.36%
Jun	332,790	336,813	-1.19%
Jul	287,985	313,059	-8.01%
Aug	0	289,430	0.00%
Sep	0	244,151	0.00%
Oct	0	266,026	0.00%
Nov	0	217,971	0.00%
Dec	0	222,066	0.00%
YTD Jul	1,901,195	1,854,044	2.54%
Total	1,901,195	3,093,688	

TOTAL DEPARTURE PAX			
Month	FY13	FY12	Var %
Jan	257,301	245,074	4.99%
Feb	212,832	204,410	4.12%
Mar	265,522	247,124	7.44%
Apr	267,718	265,784	0.73%
May	260,188	237,320	9.64%
Jun	289,839	282,802	2.49%
Jul	259,636	341,407	-23.95%
Aug	0	313,856	0.00%
Sep	0	301,790	0.00%
Oct	0	260,558	0.00%
Nov	0	237,013	0.00%
Dec	0	219,222	0.00%
YTD Jul	1,813,036	1,823,921	-0.60%
Total	1,813,036	3,156,360	

TOTAL PAX COMBINED			
Month	FY13	FY12	Var %
Jan	475,069	463,228	2.56%
Feb	447,594	425,591	5.17%
Mar	549,861	506,189	8.63%
Apr	536,559	529,220	1.39%
May	534,898	479,656	11.52%
Jun	622,629	619,615	0.49%
Jul	547,621	654,466	-16.33%
Aug	0	603,286	0.00%
Sep	0	545,941	0.00%
Oct	0	526,584	0.00%
Nov	0	454,984	0.00%
Dec	0	441,288	0.00%
YTD Jul	3,714,231	3,677,965	0.99%
Total	3,714,231	6,250,048	

TOTAL ARRIVAL ACM			
Month	FY13	FY12	Var %
Jan	2,634	2,555	3.09%
Feb	2,477	2,363	4.82%
Mar	2,848	2,769	2.85%
Apr	2,747	2,807	-2.14%
May	2,878	2,792	3.08%
Jun	3,014	3,120	-3.40%
Jul	2,923	3,230	-9.50%
Aug	0	3,114	0.00%
Sep	0	2,786	0.00%
Oct	0	2,860	0.00%
Nov	0	2,621	0.00%
Dec	0	2,585	0.00%
YTD Jul	19,521	19,636	-0.59%
Total	19,521	33,602	

TOTAL DEPARTURE ACM			
Month	FY13	FY12	Var %
Jan	2,635	2,560	2.93%
Feb	2,483	2,350	5.66%
Mar	2,844	2,776	2.45%
Apr	2,753	2,800	-1.68%
May	2,877	2,802	2.68%
Jun	3,006	3,118	-3.59%
Jul	2,921	3,229	-9.54%
Aug	0	3,114	0.00%
Sep	0	2,778	0.00%
Oct	0	2,860	0.00%
Nov	0	2,621	0.00%
Dec	0	2,580	0.00%
YTD Jul	19,519	19,635	-0.59%
Total	19,519	33,588	

TOTAL ACM COMBINED			
Month	FY13	FY12	Var %
Jan	5,269	5,115	3.01%
Feb	4,960	4,713	5.24%
Mar	5,692	5,545	2.65%
Apr	5,500	5,607	-1.91%
May	5,755	5,594	2.88%
Jun	6,020	6,238	-3.49%
Jul	5,844	6,459	-9.52%
Aug	0	6,228	0.00%
Sep	0	5,564	0.00%
Oct	0	5,720	0.00%
Nov	0	5,242	0.00%
Dec	0	5,165	0.00%
YTD Jul	39,040	39,271	-0.59%
Total	39,040	67,190	

TOTAL ARRIVAL CARGO TONS			
Month	FY13	FY12	Var %
Jan	4,075	3,960	2.91%
Feb	4,005	4,046	-1.03%
Mar	5,170	4,716	9.62%
Apr	5,151	5,061	1.78%
May	4,945	4,284	15.44%
Jun	4,748	4,945	-3.98%
Jul	5,020	5,148	-2.47%
Aug	0	4,748	0.00%
Sep	0	5,034	0.00%
Oct	0	5,196	0.00%
Nov	0	4,549	0.00%
Dec	0	5,415	0.00%
YTD Jul	33,115	32,160	2.97%
Total	33,115	57,101	

TOTAL DEPARTURE CARGO TONS			
Month	FY13	FY12	Var %
Jan	2,756	2,871	-4.02%
Feb	2,740	2,684	2.07%
Mar	3,499	3,325	5.23%
Apr	3,389	3,258	4.02%
May	3,047	3,254	-6.36%
Jun	2,951	3,076	-4.08%
Jul	2,951	3,404	-13.30%
Aug	0	2,609	0.00%
Sep	0	3,118	0.00%
Oct	0	2,857	0.00%
Nov	0	3,048	0.00%
Dec	0	3,459	0.00%
YTD Jul	21,332	21,872	-2.47%
Total	21,332	36,963	

TOTAL CARGO COMBINED TONS			
Month	FY13	FY12	Var %
Jan	6,831	6,831	0.00%
Feb	6,744	6,731	0.20%
Mar	8,669	8,041	7.80%
Apr	8,540	8,319	2.66%
May	7,992	7,538	6.03%
Jun	7,699	8,021	-4.02%
Jul	7,971	8,551	-6.78%
Aug	0	7,357	0.00%
Sep	0	8,152	0.00%
Oct	0	8,053	0.00%
Nov	0	7,597	0.00%
Dec	0	8,874	0.00%
YTD Jul	54,446	54,032	0.77%
Total	54,446	94,064	