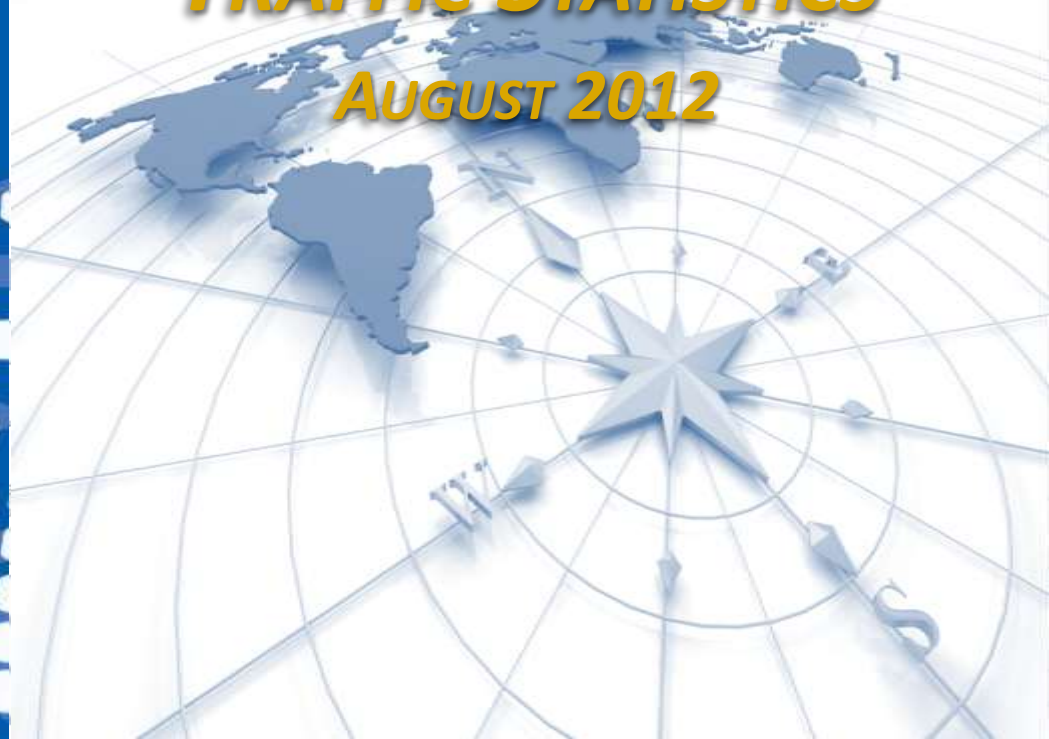


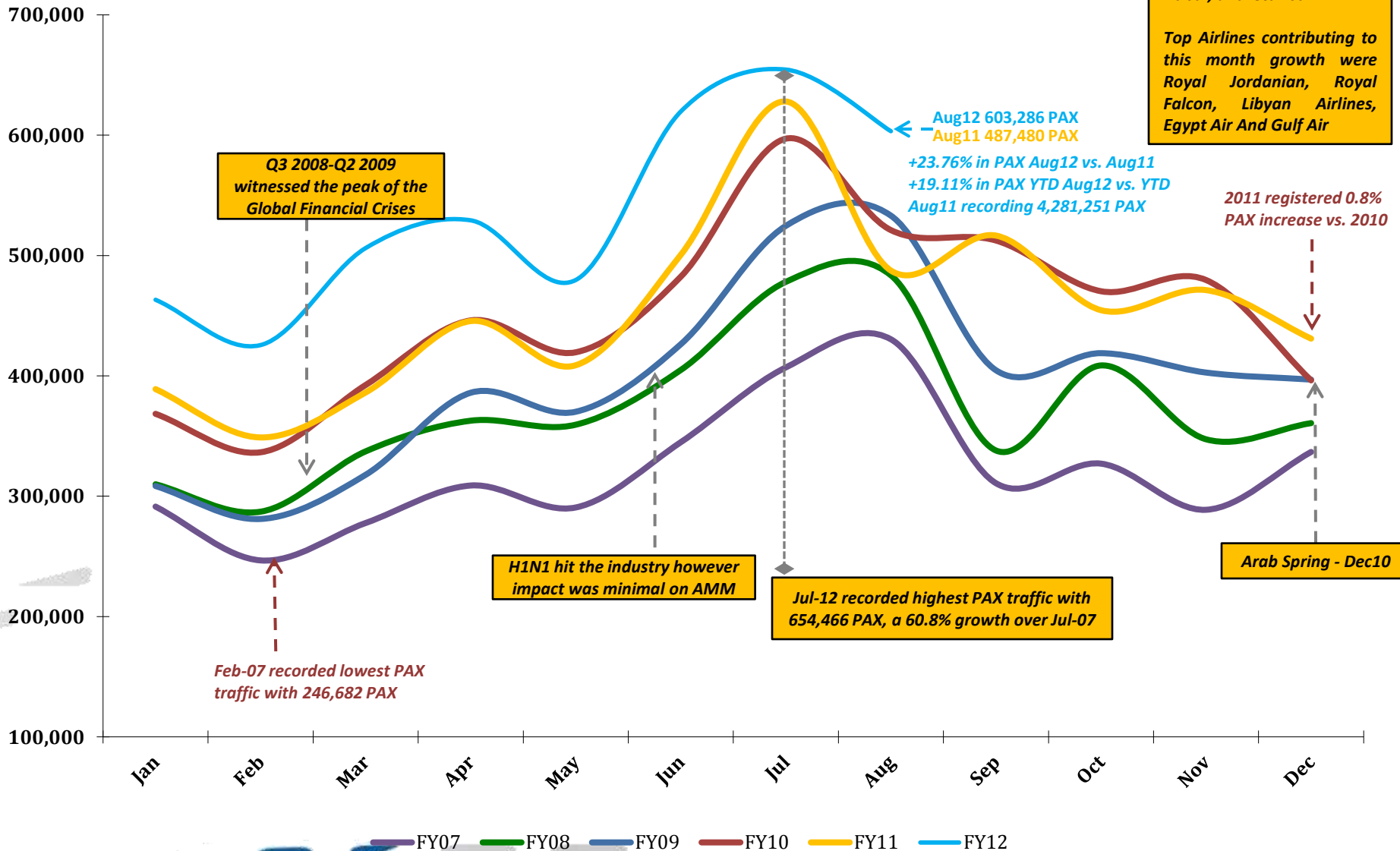


Airport International Group  
مجموعة المطار الدولي

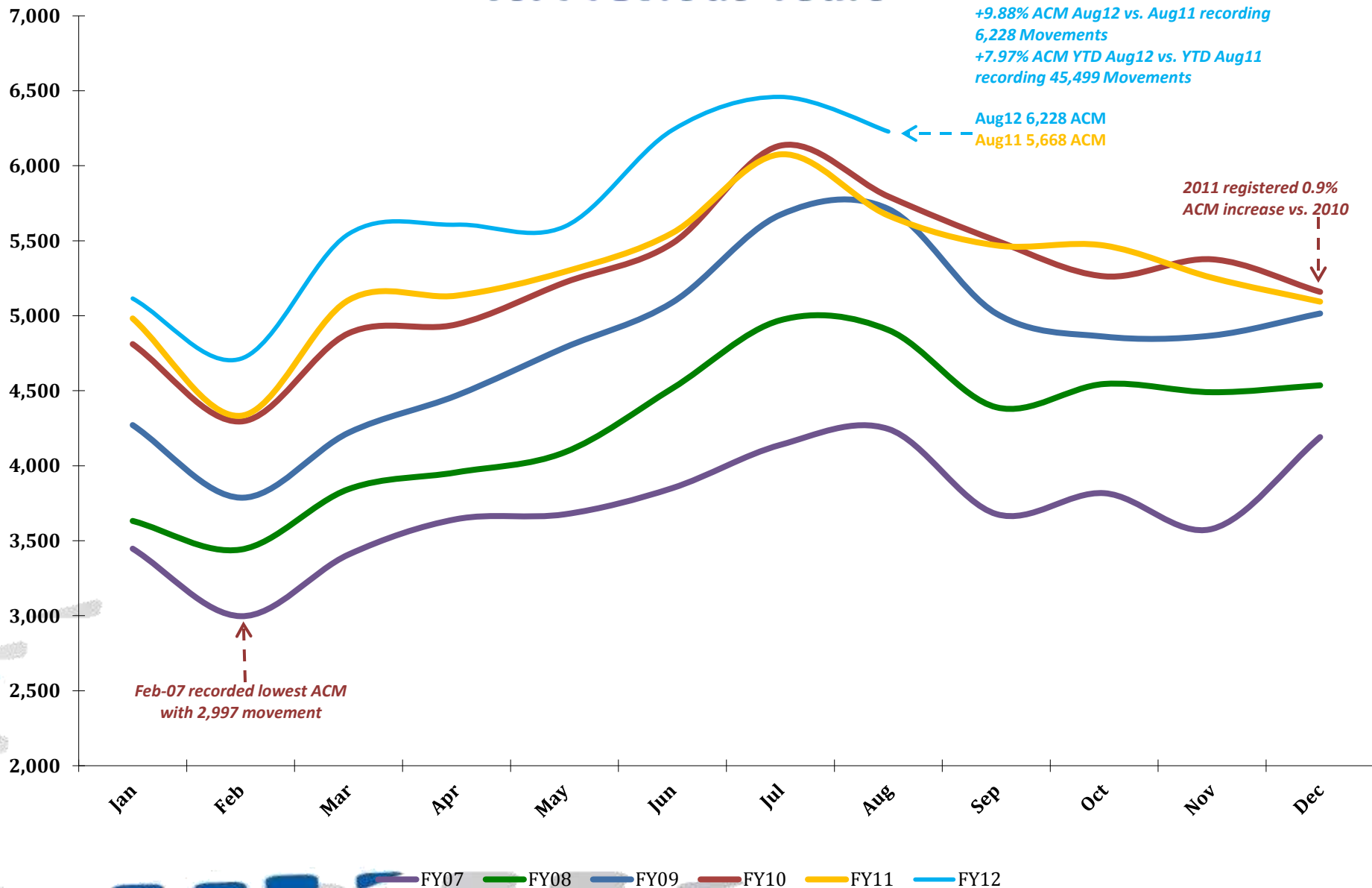
***QAIA MONTHLY  
TRAFFIC STATISTICS  
AUGUST 2012***



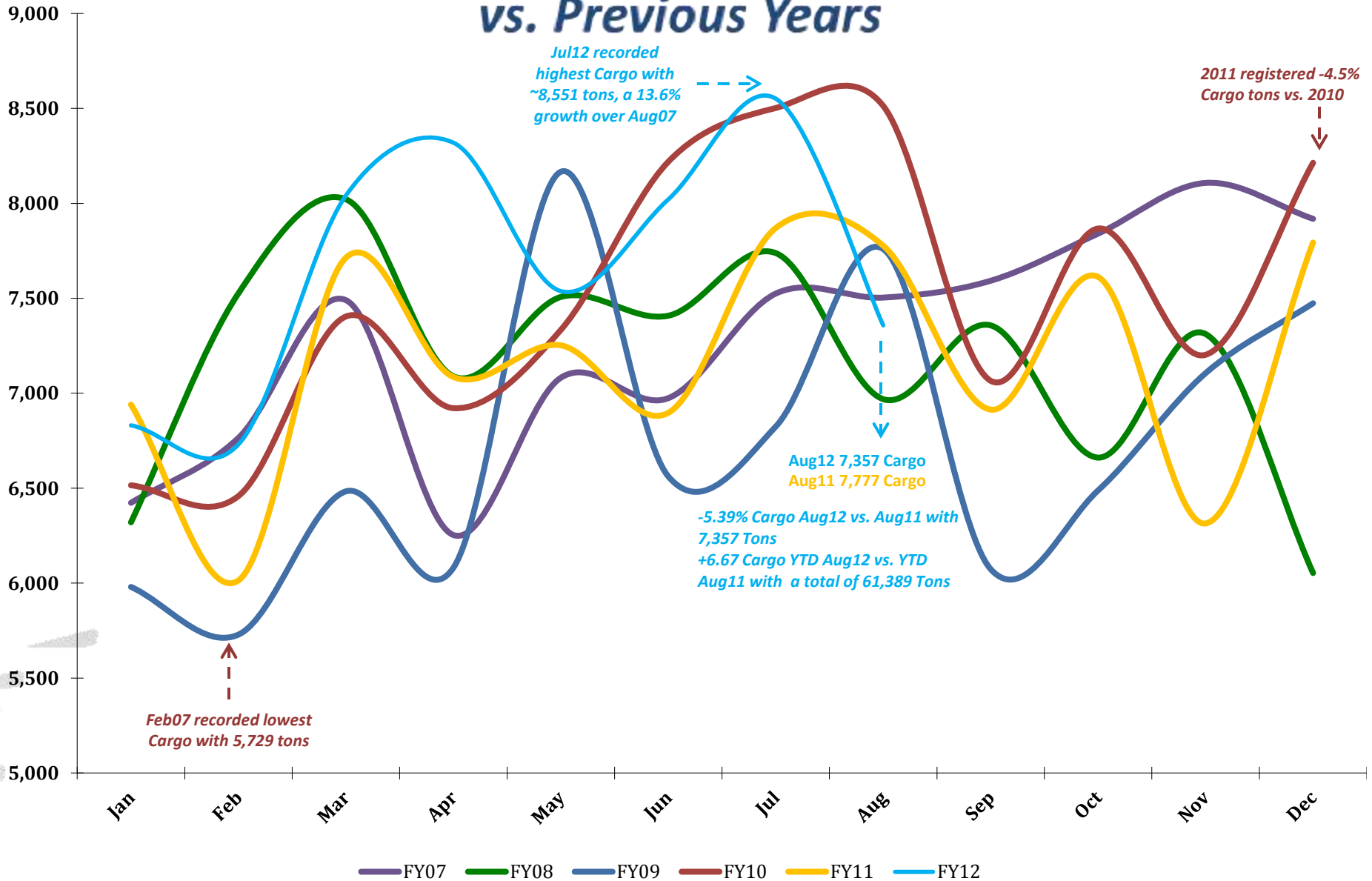
# Total PAX per Month FY 2012 vs. Previous Years



# Total ACM per Month FY 2012 vs. Previous Years



# Total CARGO per Month FY 2012 vs. Previous Years



# QAIA Traffic Data – YTD Aug 2012

TOTAL ARRIVAL PAX			
Month	FY12	FY11	Var %
Jan	218,154	177,386	22.98%
Feb	221,181	182,889	20.94%
Mar	259,065	197,952	30.87%
Apr	263,436	222,993	18.14%
May	242,336	208,811	16.06%
Jun	336,813	278,591	20.90%
Jul	313,059	322,221	-2.84%
Aug	289,430	225,339	28.44%
Sep		230,895	0.00%
Oct		227,821	0.00%
Nov		230,905	0.00%
Dec		219,027	0.00%
YTD Aug	2,143,474	1,816,182	18.02%
<b>Total</b>	<b>2,143,474</b>	<b>1,816,182</b>	

TOTAL DEPARTURE PAX		
FY12	FY11	Var %
245,074	211,614	15.81%
204,410	165,943	23.18%
247,124	188,251	31.27%
265,784	222,533	19.44%
237,320	200,016	18.65%
282,802	221,971	27.40%
341,407	305,748	11.66%
313,856	262,141	19.73%
	285,658	0.00%
	226,741	0.00%
	240,357	0.00%
	211,923	0.00%
2,137,777	1,778,217	20.22%
<b>2,137,777</b>	<b>1,778,217</b>	

TOTAL PAX COMBINED		
FY12	FY11	Var %
463,228	389,000	19.08%
425,591	348,832	22.00%
506,189	386,203	31.07%
529,220	445,526	18.79%
479,656	408,827	17.32%
619,615	500,562	23.78%
654,466	627,969	4.22%
603,286	487,480	23.76%
	516,553	0.00%
	454,562	0.00%
	471,262	0.00%
	430,950	0.00%
4,281,251	3,594,399	19.11%
<b>4,281,251</b>	<b>3,594,399</b>	

TOTAL ARRIVAL ACM			
Month	FY12	FY11	Var %
Jan	2,555	2,487	2.73%
Feb	2,363	2,167	9.04%
Mar	2,769	2,556	8.33%
Apr	2,807	2,564	9.48%
May	2,792	2,645	5.56%
Jun	3,120	2,777	12.35%
Jul	3,230	3,038	6.32%
Aug	3,114	2,833	9.92%
Sep		2,735	0.00%
Oct		2,737	0.00%
Nov		2,628	0.00%
Dec		2,547	0.00%
YTD Aug	22,750	21,067	7.99%
<b>Total</b>	<b>22,750</b>	<b>21,067</b>	

TOTAL DEPARTURE ACM		
FY12	FY11	Var %
2,560	2,495	2.61%
2,350	2,166	8.49%
2,776	2,548	8.95%
2,800	2,570	8.95%
2,802	2,648	5.82%
3,118	2,775	12.36%
3,229	3,038	6.29%
3,114	2,835	9.84%
	2,734	0.00%
	2,731	0.00%
	2,625	0.00%
	2,547	0.00%
22,749	21,075	7.94%
<b>22,749</b>	<b>21,075</b>	

TOTAL ACM COMBINED		
FY12	FY11	Var %
5,115	4,982	2.67%
4,713	4,333	8.77%
5,545	5,104	8.64%
5,607	5,134	9.21%
5,594	5,293	5.69%
6,238	5,552	12.36%
6,459	6,076	6.30%
6,228	5,668	9.88%
	5,469	0.00%
	5,468	0.00%
	5,253	0.00%
	5,094	0.00%
45,499	42,142	7.97%
<b>45,499</b>	<b>42,142</b>	

TOTAL ARRIVAL CARGO TONS			
Month	FY12	FY11	Var %
Jan	3,960	4,089	-3.16%
Feb	4,046	3,665	10.39%
Mar	4,716	4,398	7.22%
Apr	5,061	4,248	19.15%
May	4,284	4,352	-1.58%
Jun	4,945	4,024	22.87%
Jul	5,148	4,713	9.22%
Aug	4,748	4,671	1.65%
Sep		3,989	0.00%
Oct		4,545	0.00%
Nov		3,830	0.00%
Dec		4,759	0.00%
YTD Aug	36,908	34,162	8.04%
<b>Total</b>	<b>36,908</b>	<b>34,162</b>	

TOTAL DEPARTURE CARGO TONS		
FY12	FY11	Var %
2,871	2,851	0.71%
2,684	2,349	14.28%
3,325	3,315	0.30%
3,258	2,838	14.81%
3,254	2,900	12.21%
3,076	2,872	7.09%
3,404	3,157	7.81%
2,609	3,106	-15.99%
	2,925	0.00%
	3,068	0.00%
	2,484	0.00%
	3,034	0.00%
24,481	23,388	4.68%
<b>24,481</b>	<b>23,388</b>	

TOTAL CARGO COMBINED TONS		
FY12	FY11	Var %
6,831	6,940	-1.57%
6,731	6,014	11.91%
8,041	7,714	4.25%
8,319	7,086	17.41%
7,538	7,252	3.94%
8,021	6,897	16.30%
8,551	7,870	8.66%
7,357	7,777	-5.39%
	6,914	0.00%
	7,612	0.00%
	6,314	0.00%
	7,794	0.00%
61,389	57,550	6.67%
<b>61,389</b>	<b>57,550</b>	