



Airport International Group
مجموعة المطار الدولي

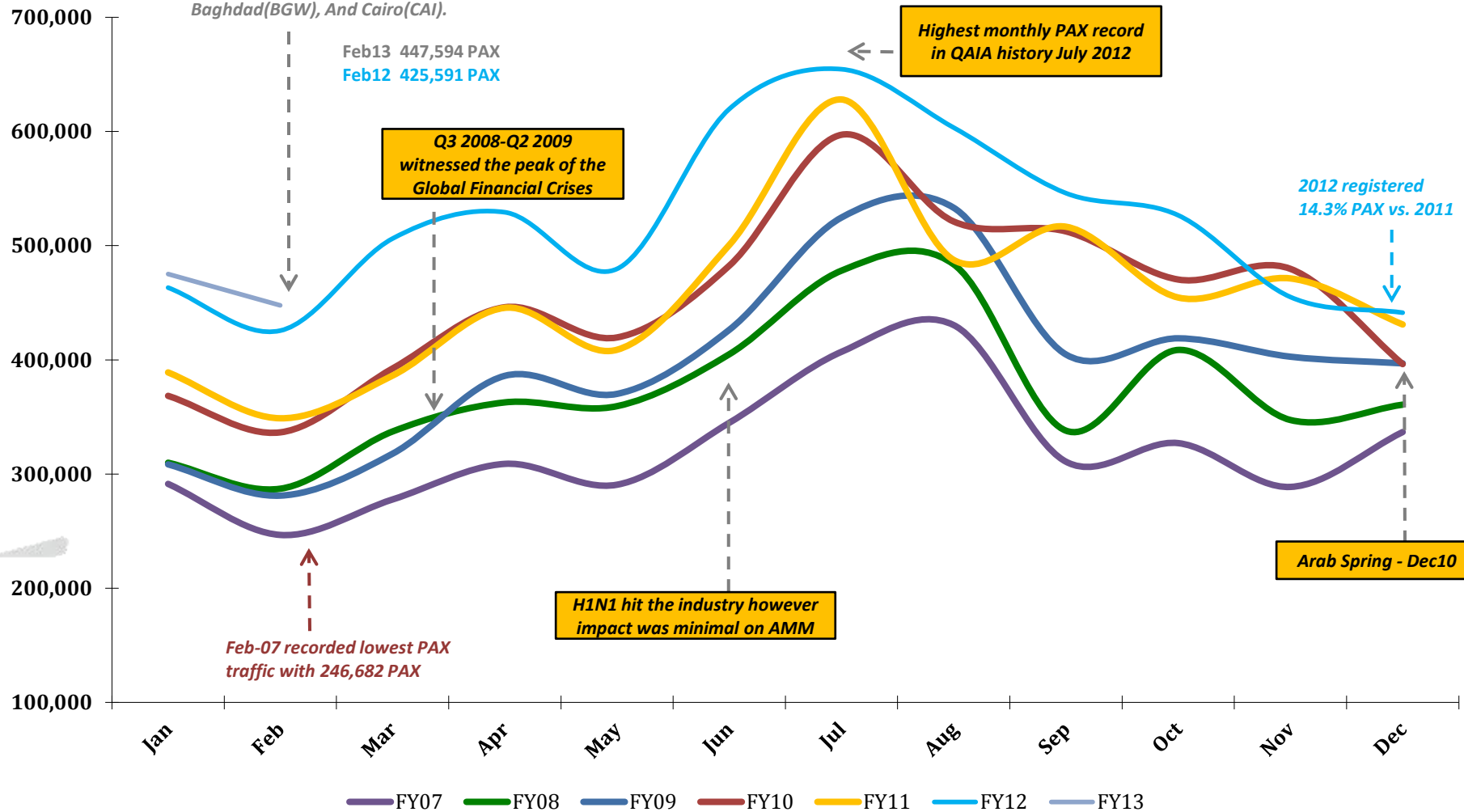
***QAIA MONTHLY
TRAFFIC STATISTICS
FEBRUARY 2013***



Total PAX per Month FY 2013 vs. Previous Years

+3.8% in PAX YTD Feb 2013 vs. YTD Feb 2012

Top contributing Destinations to this month's growth were Jeddah (JED), Beirut (BEY), Dubai (DXB), Baghdad (BGW), And Cairo (CAI).

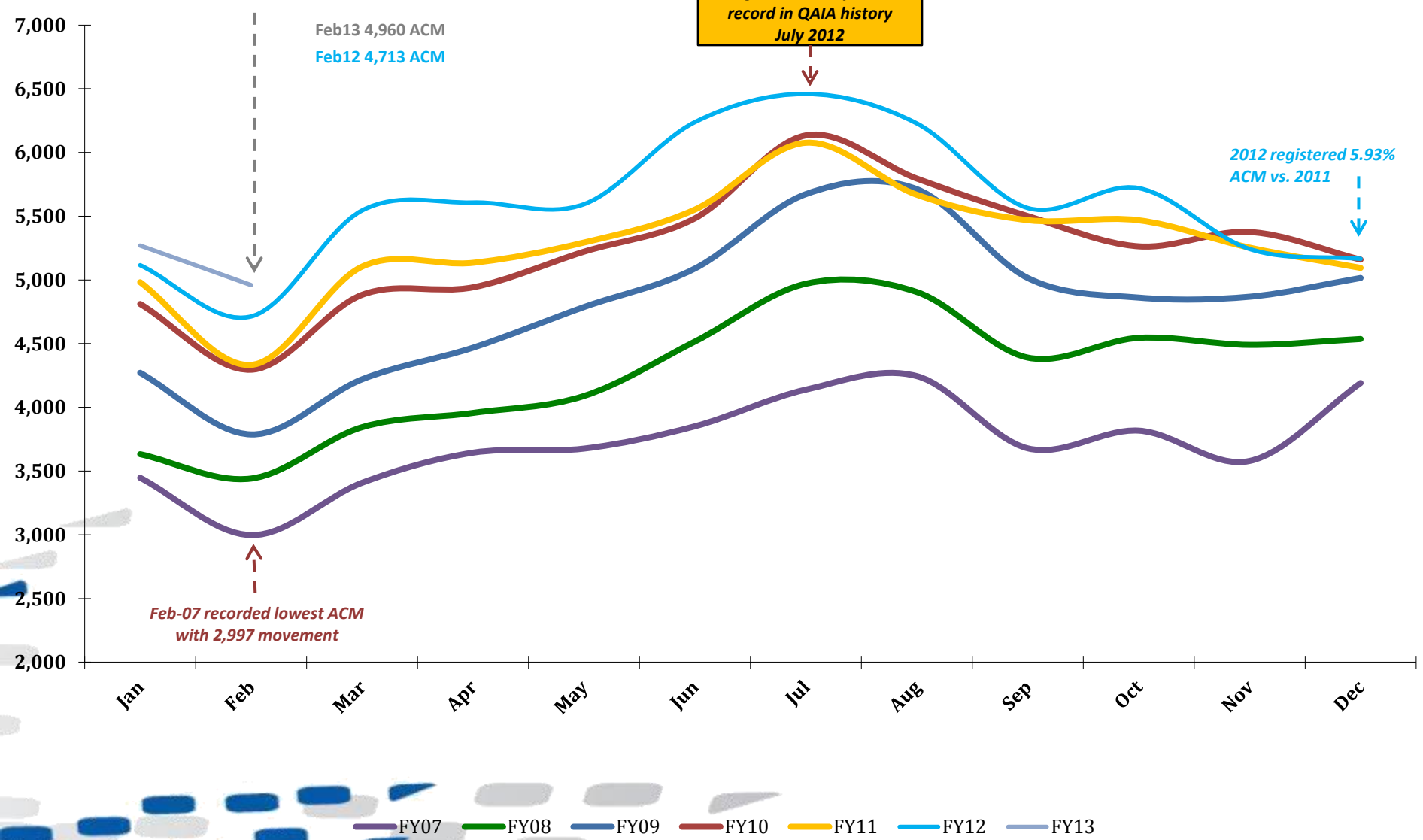


— FY07 — FY08 — FY09 — FY10 — FY11 — FY12 — FY13

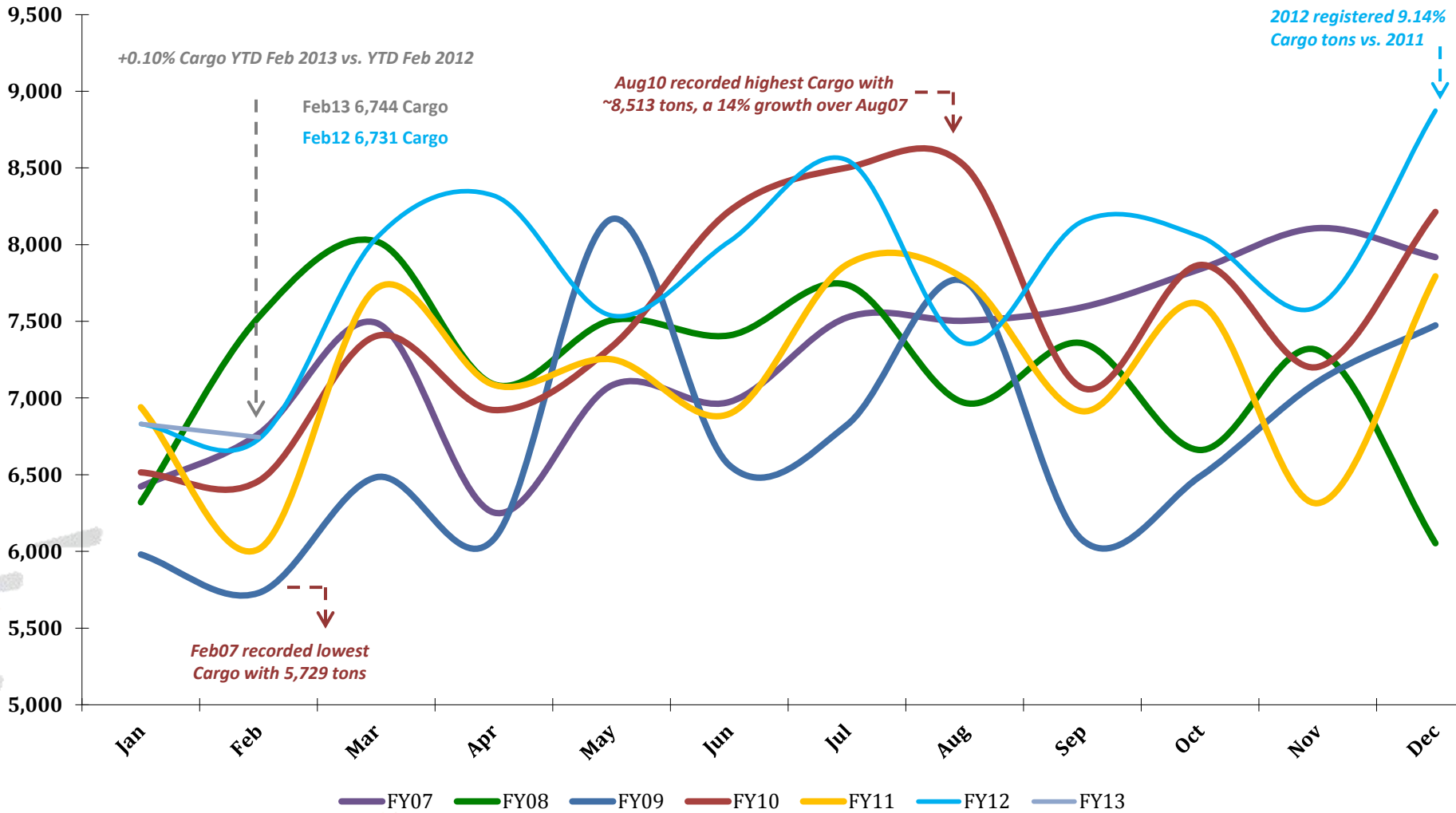
Total ACM per Month FY 2013 vs. Previous Years

+4.08% in ACM YTD Feb 2013 vs. YTD Feb 2012

Top contributing Airlines to this month's growth were ROYAL FALCON(RL), GULF AIR(GF), NATIONAL AIR SERVICES(XY), EMIRATES(EK) and IRAQI AIRWAYS(IA)



Total CARGO per Month FY 2013 vs. Previous Years



Traffic Data

TOTAL ARRIVAL PAX			
Month	FY13	FY12	Var %
Jan	217,768	218,154	-0.18%
Feb	234,762	221,181	6.14%
Mar	0	259,065	0.00%
Apr	0	263,436	0.00%
May	0	242,336	0.00%
Jun	0	336,813	0.00%
Jul	0	313,059	0.00%
Aug	0	289,430	0.00%
Sep	0	244,151	0.00%
Oct	0	266,026	0.00%
Nov	0	217,971	0.00%
Dec	0	222,066	0.00%
YTD February	452,530	439,335	3.00%
Total	452,530	3,093,688	

TOTAL DEPARTURE PAX		
FY13	FY12	Var %
257,301	245,074	4.99%
212,832	204,410	4.12%
0	247,124	0.00%
0	265,784	0.00%
0	237,320	0.00%
0	282,802	0.00%
0	341,407	0.00%
0	313,856	0.00%
0	301,790	0.00%
0	260,558	0.00%
0	237,013	0.00%
0	219,222	0.00%
470,133	449,484	4.59%
470,133	3,156,360	

TOTAL PAX COMBINED		
FY13	FY12	Var %
475,069	463,228	2.56%
447,594	425,591	5.17%
0	506,189	0.00%
0	529,220	0.00%
0	479,656	0.00%
0	619,615	0.00%
0	654,466	0.00%
0	603,286	0.00%
0	545,941	0.00%
0	526,584	0.00%
0	454,984	0.00%
0	441,288	0.00%
922,663	888,819	3.81%
922,663	6,250,048	

TOTAL ARRIVAL ACM			
Month	FY13	FY12	Var %
Jan	2,634	2,555	3.09%
Feb	2,477	2,363	4.82%
Mar	0	2,769	0.00%
Apr	0	2,807	0.00%
May	0	2,792	0.00%
Jun	0	3,120	0.00%
Jul	0	3,230	0.00%
Aug	0	3,114	0.00%
Sep	0	2,786	0.00%
Oct	0	2,860	0.00%
Nov	0	2,621	0.00%
Dec	0	2,585	0.00%
YTD February	5,111	4,918	3.92%
Total	5,111	33,602	

TOTAL DEPARTURE ACM		
FY13	FY12	Var %
2,635	2,560	2.93%
2,483	2,350	5.66%
0	2,776	0.00%
0	2,800	0.00%
0	2,802	0.00%
0	3,118	0.00%
0	3,229	0.00%
0	3,114	0.00%
0	2,778	0.00%
0	2,860	0.00%
0	2,621	0.00%
0	2,580	0.00%
5,118	4,910	4.24%
5,118	33,588	

TOTAL ACM COMBINED		
FY13	FY12	Var %
5,269	5,115	3.01%
4,960	4,713	5.24%
0	5,545	0.00%
0	5,607	0.00%
0	5,594	0.00%
0	6,238	0.00%
0	6,459	0.00%
0	6,228	0.00%
0	5,564	0.00%
0	5,720	0.00%
0	5,242	0.00%
0	5,165	0.00%
10,229	9,828	4.08%
10,229	67,190	

TOTAL ARRIVAL CARGO TONS			
Month	FY13	FY12	Var %
Jan	4,075	3,960	2.91%
Feb	4,005	4,046	-1.03%
Mar	0	4,716	0.00%
Apr	0	5,061	0.00%
May	0	4,284	0.00%
Jun	0	4,945	0.00%
Jul	0	5,148	0.00%
Aug	0	4,748	0.00%
Sep	0	5,034	0.00%
Oct	0	5,196	0.00%
Nov	0	4,549	0.00%
Dec	0	5,415	0.00%
YTD February	8,080	8,006	0.92%
Total	8,080	57,101	

TOTAL DEPARTURE CARGO TONS		
FY13	FY12	Var %
2,756	2,871	-4.02%
2,740	2,684	2.07%
0	3,325	0.00%
0	3,258	0.00%
0	3,254	0.00%
0	3,076	0.00%
0	3,404	0.00%
0	2,609	0.00%
0	3,118	0.00%
0	2,857	0.00%
0	3,048	0.00%
0	3,459	0.00%
5,495	5,555	-1.08%
5,495	36,963	

TOTAL CARGO COMBINED TONS		
FY13	FY12	Var %
6,831	6,831	0.00%
6,744	6,731	0.20%
0	8,041	0.00%
0	8,319	0.00%
0	7,538	0.00%
0	8,021	0.00%
0	8,551	0.00%
0	7,357	0.00%
0	8,152	0.00%
0	8,053	0.00%
0	7,597	0.00%
0	8,874	0.00%
13,575	13,561	0.10%
13,575	94,064	