

Executive Summary:

Positive momentum had carried through 2012 over Q1 2013 in terms of PAX, ACM and CFMs.

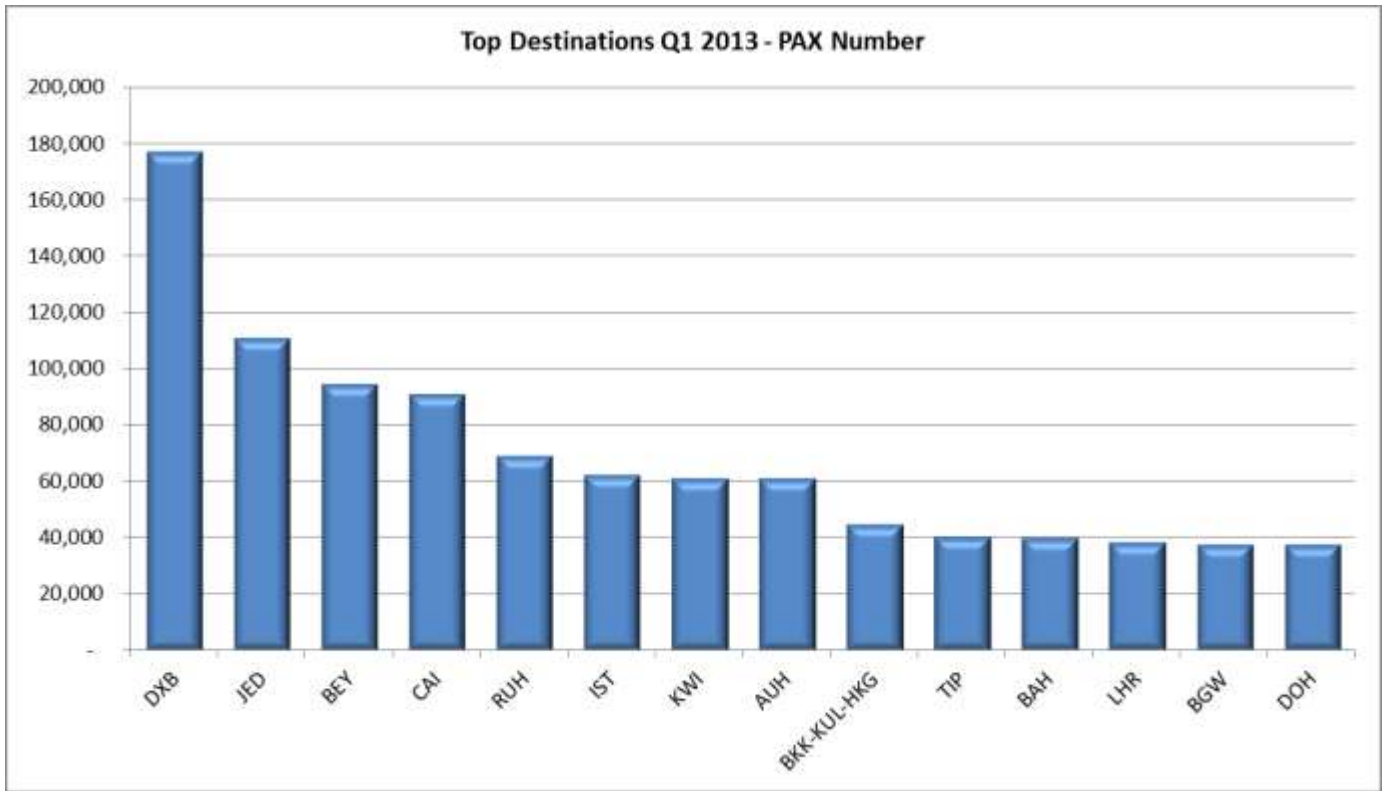
Despite the political unrest throughout the region, AMM witnessed continuous. Moreover; AIG constantly monitors the economical and external environment changes, and their possible effect on traffic (positive/negative).

- **PAX:** Q1 2013 had witnessed a growth of **5.56%** recording **1,472,524** PAX comparing to **1,395,008** PAX recorded during the same period last year.
- **ACM:** Q1 2013 had witnessed a growth of **3.56%** recording **15,921** movements comparing to **15,373** movements recorded during the same period last year.
- **CFMs (Cargo):** Q1 2013 had witnessed a growth of **2.97%** handling **22,244** Tons comparing to **21,603** Tons handled during the same period last year.

On the Routes & Network development side, positive momentum has been witnessed through Q1 2013, with additional new services, carriers and frequencies added/announced briefed on the Below table.

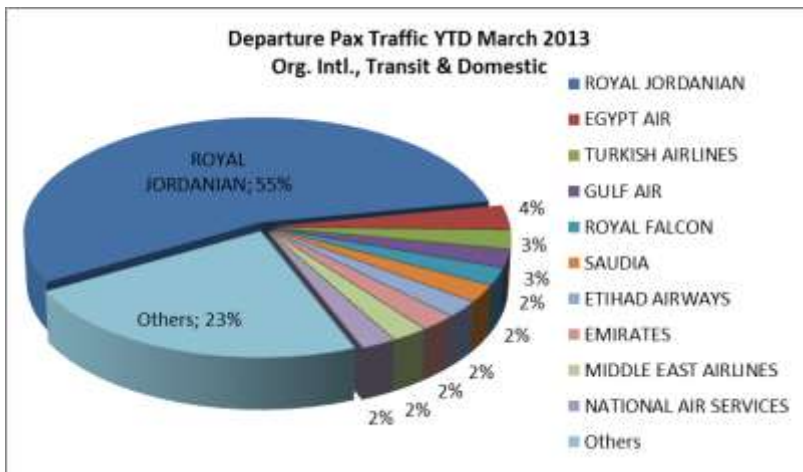
Airlines	Airport	City	Operation	Route Status	Effective
Royal Jordanian	ALG	Algiers	Scheduled	New Service	as of ... Feb-13
Neos Airlines	MXP	Milan	Scheduled	New service	as of ... Mar-13
Neos Airlines	BLQ	Bologna	Scheduled	New service	as of ... Mar-13
Saudi Arabian Airlines	JED	Jeddah	Scheduled	Increase Freq.	as of ... Mar-13
UM Airlines	KBP	Kiev	Scheduled	Increase Freq.	as of ... Mar-13

The below chart represents our top 15 destinations in traffic movements.



Within QAIA destinations network, our most significant markets were DXB, JED, BEY, CAI and RUH collectively having ~ **543,528** PAX which is **37%** of the traffic travelling in both directions.

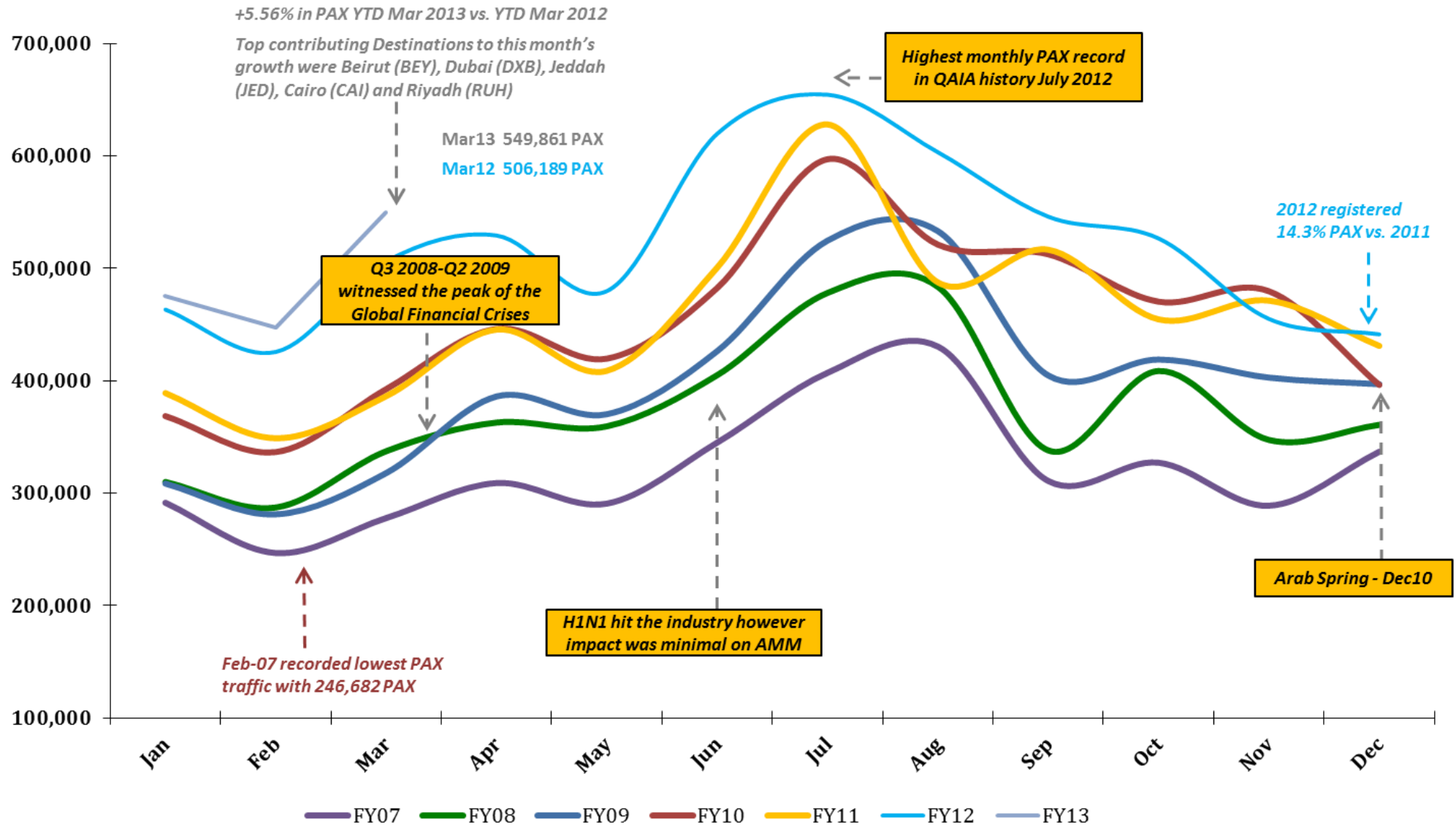
In terms of the broader market (outside the Mena), the most significant markets were IST, (BKK/KUL/HKG) and LHR collectively having ~ **145,962** PAX which is **10%** of the traffic travelling in both directions.



In terms of ACM, the top 5 airlines sorted in descending order were Royal Jordanian, Egypt Air, Turkish Airlines, Gulf Air and Royal Falcon.

The Pie represents our top 10 Airlines in Aircraft Movements.

Queen Alia International Airport 1st Quarter Report 2013

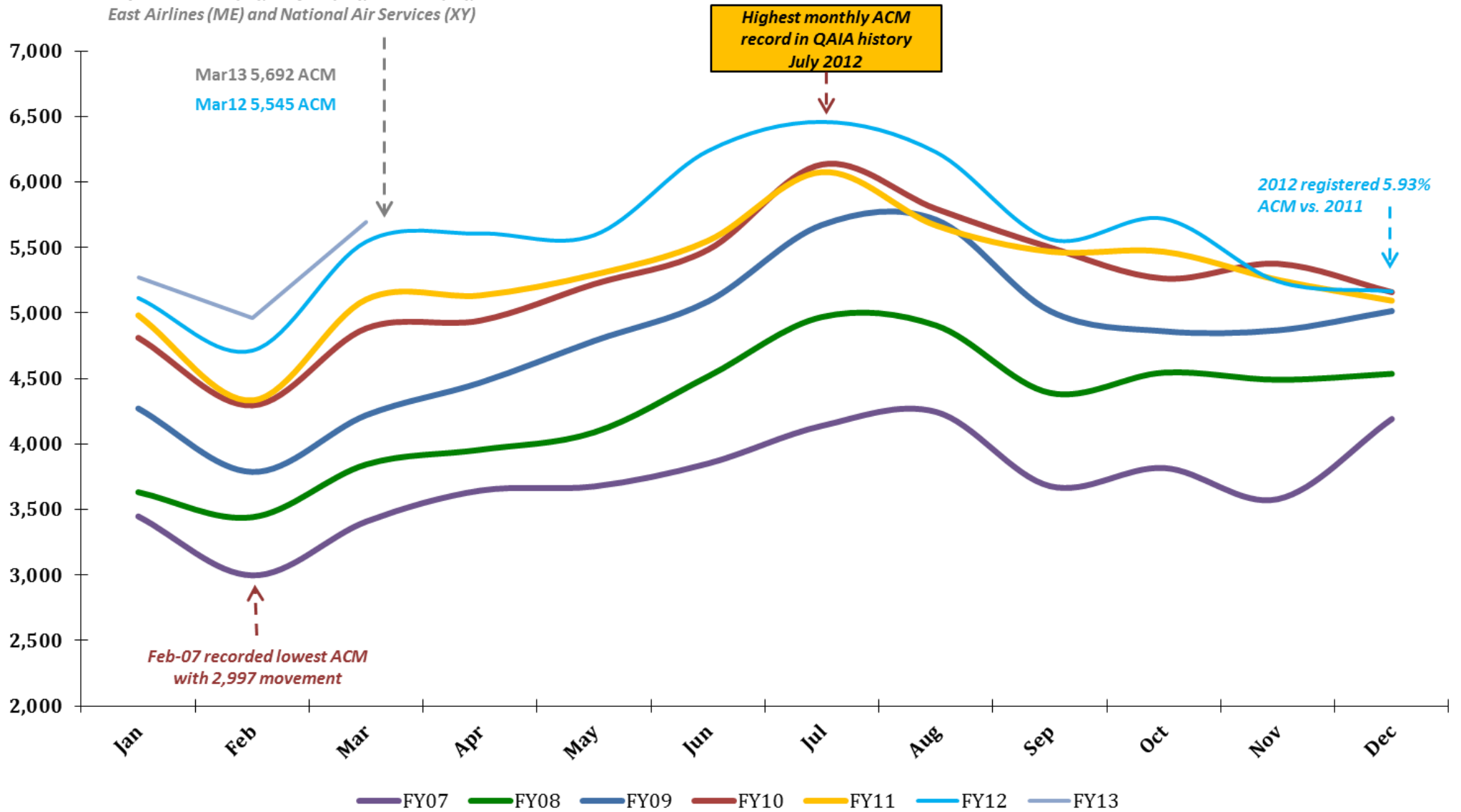


Queen Alia International Airport

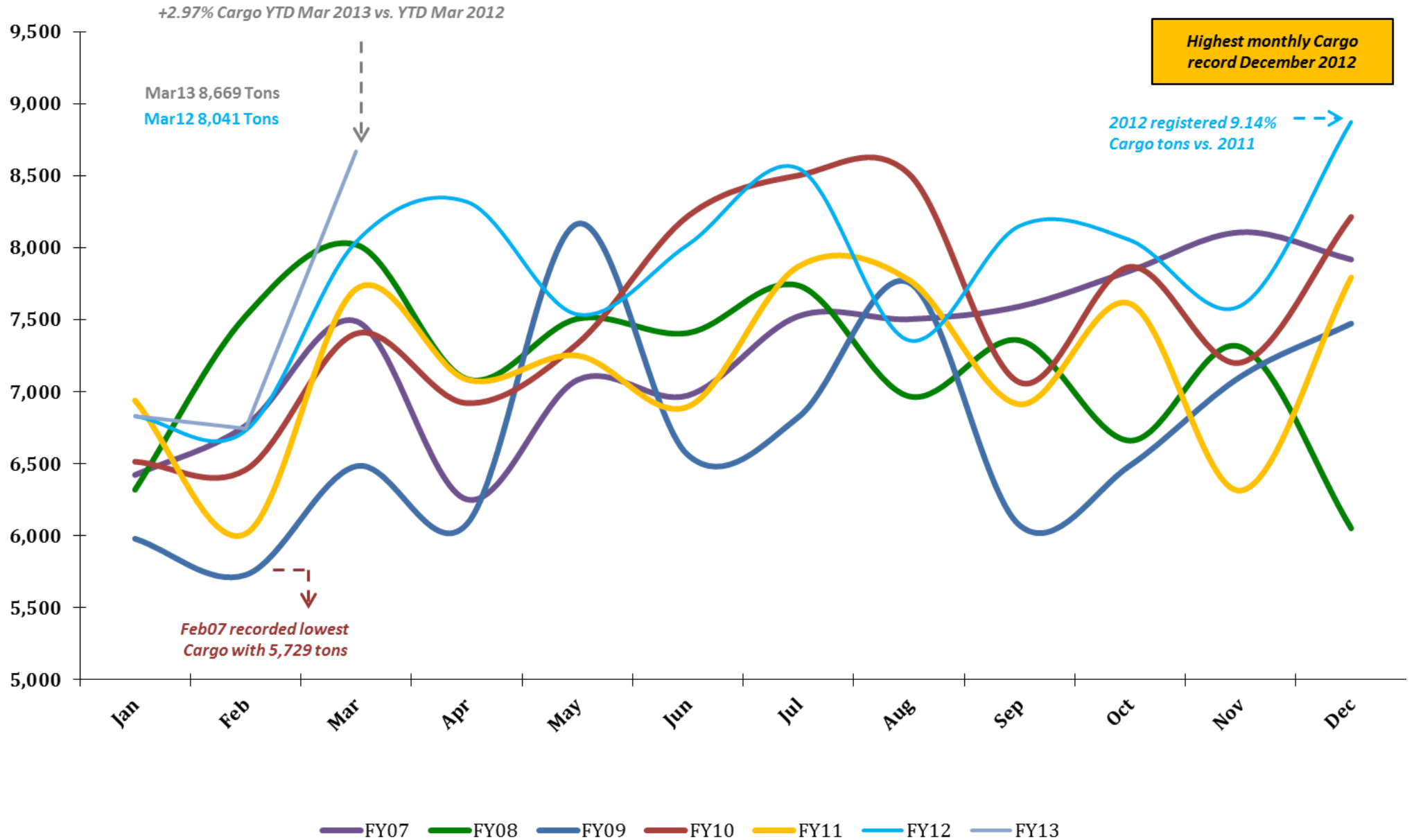
1st Quarter Report 2013

+3.56% in ACM YTD Mar 2013 vs. YTD Mar 2012

Top contributing Airlines to this month's growth were Royal Jordanian (RJ), Gulf Air (GF), Emirates (EK), Middle East Airlines (ME) and National Air Services (XY)



Queen Alia International Airport 1st Quarter Report 2013



Queen Alia International Airport

1st Quarter Report 2012

TOTAL ARRIVAL PAX			
Month	FY13	FY12	Var %
Jan	217,768	218,154	-0.18%
Feb	234,762	221,181	6.14%
Mar	284,339	259,065	9.76%
Apr	0	263,436	0.00%
May	0	242,336	0.00%
Jun	0	336,813	0.00%
Jul	0	313,059	0.00%
Aug	0	289,430	0.00%
Sep	0	244,151	0.00%
Oct	0	266,026	0.00%
Nov	0	217,971	0.00%
Dec	0	222,066	0.00%
YTD March	736,869	698,400	5.51%
Total	736,869	3,093,688	

TOTAL DEPARTURE PAX		
FY13	FY12	Var %
257,301	245,074	4.99%
212,832	204,410	4.12%
265,522	247,124	7.44%
0	265,784	0.00%
0	237,320	0.00%
0	282,802	0.00%
0	341,407	0.00%
0	313,856	0.00%
0	301,790	0.00%
0	260,558	0.00%
0	237,013	0.00%
0	219,222	0.00%
735,655	696,608	5.61%
735,655	3,156,360	

TOTAL PAX COMBINED		
FY13	FY12	Var %
475,069	463,228	2.56%
447,594	425,591	5.17%
549,861	506,189	8.63%
0	529,220	0.00%
0	479,656	0.00%
0	619,615	0.00%
0	654,466	0.00%
0	603,286	0.00%
0	545,941	0.00%
0	526,584	0.00%
0	454,984	0.00%
0	441,288	0.00%
1,472,524	1,395,008	5.56%
1,472,524	6,250,048	

TOTAL ARRIVAL ACM			
Month	FY13	FY12	Var %
Jan	2,634	2,555	3.09%
Feb	2,477	2,363	4.82%
Mar	2,848	2,769	2.85%
Apr	0	2,807	0.00%
May	0	2,792	0.00%
Jun	0	3,120	0.00%
Jul	0	3,230	0.00%
Aug	0	3,114	0.00%
Sep	0	2,786	0.00%
Oct	0	2,860	0.00%
Nov	0	2,621	0.00%
Dec	0	2,585	0.00%
YTD March	7,959	7,687	3.54%
Total	7,959	33,602	

TOTAL DEPARTURE ACM		
FY13	FY12	Var %
2,635	2,560	2.93%
2,483	2,350	5.66%
2,844	2,776	2.45%
0	2,800	0.00%
0	2,802	0.00%
0	3,118	0.00%
0	3,229	0.00%
0	3,114	0.00%
0	2,778	0.00%
0	2,860	0.00%
0	2,621	0.00%
0	2,580	0.00%
7,962	7,686	3.59%
7,962	33,588	

TOTAL ACM COMBINED		
FY13	FY12	Var %
5,269	5,115	3.01%
4,960	4,713	5.24%
5,692	5,545	2.65%
0	5,607	0.00%
0	5,594	0.00%
0	6,238	0.00%
0	6,459	0.00%
0	6,228	0.00%
0	5,564	0.00%
0	5,720	0.00%
0	5,242	0.00%
0	5,165	0.00%
15,921	15,373	3.56%
15,921	67,190	

TOTAL ARRIVAL CARGO TONS			
Month	FY13	FY12	Var %
Jan	4,075	3,960	2.91%
Feb	4,005	4,046	-1.03%
Mar	5,170	4,716	9.62%
Apr	0	5,061	0.00%
May	0	4,284	0.00%
Jun	0	4,945	0.00%
Jul	0	5,148	0.00%
Aug	0	4,748	0.00%
Sep	0	5,034	0.00%
Oct	0	5,196	0.00%
Nov	0	4,549	0.00%
Dec	0	5,415	0.00%
YTD March	13,249	12,722	4.15%
Total	13,249	57,101	

TOTAL DEPARTURE CARGO TONS		
FY13	FY12	Var %
2,756	2,871	-4.02%
2,740	2,684	2.07%
3,499	3,325	5.23%
0	3,258	0.00%
0	3,254	0.00%
0	3,076	0.00%
0	3,404	0.00%
0	2,609	0.00%
0	3,118	0.00%
0	2,857	0.00%
0	3,048	0.00%
0	3,459	0.00%
8,995	8,881	1.28%
8,995	36,963	

TOTAL CARGO COMBINED TONS		
FY13	FY12	Var %
6,831	6,831	0.00%
6,744	6,731	0.20%
8,669	8,041	7.80%
0	8,319	0.00%
0	7,538	0.00%
0	8,021	0.00%
0	8,551	0.00%
0	7,357	0.00%
0	8,152	0.00%
0	8,053	0.00%
0	7,597	0.00%
0	8,874	0.00%
22,244	21,603	2.97%
22,244	94,064	

More Information:

For more information about QAIA, AIG & our Corporate Profile, kindly visit us at: www.aig.aero

Feedback & Comments:

For any feedback, comments or other enquiries, please do not hesitate to contact the Route Development Department at:

- *Tel: +962 (6) 445 3000*
- Fax: +962 (6) 445 3444*
- [*RD@aig.aero*](mailto:RD@aig.aero)
- Airport International Group*
- P.O. Box 39052*
- Amman 11104*
- Jordan*